

DRAWING NOT TO SCALE

PUMP STATION ACCESS AND BUFFERS

TOWN OF HOLLY SPRINGS

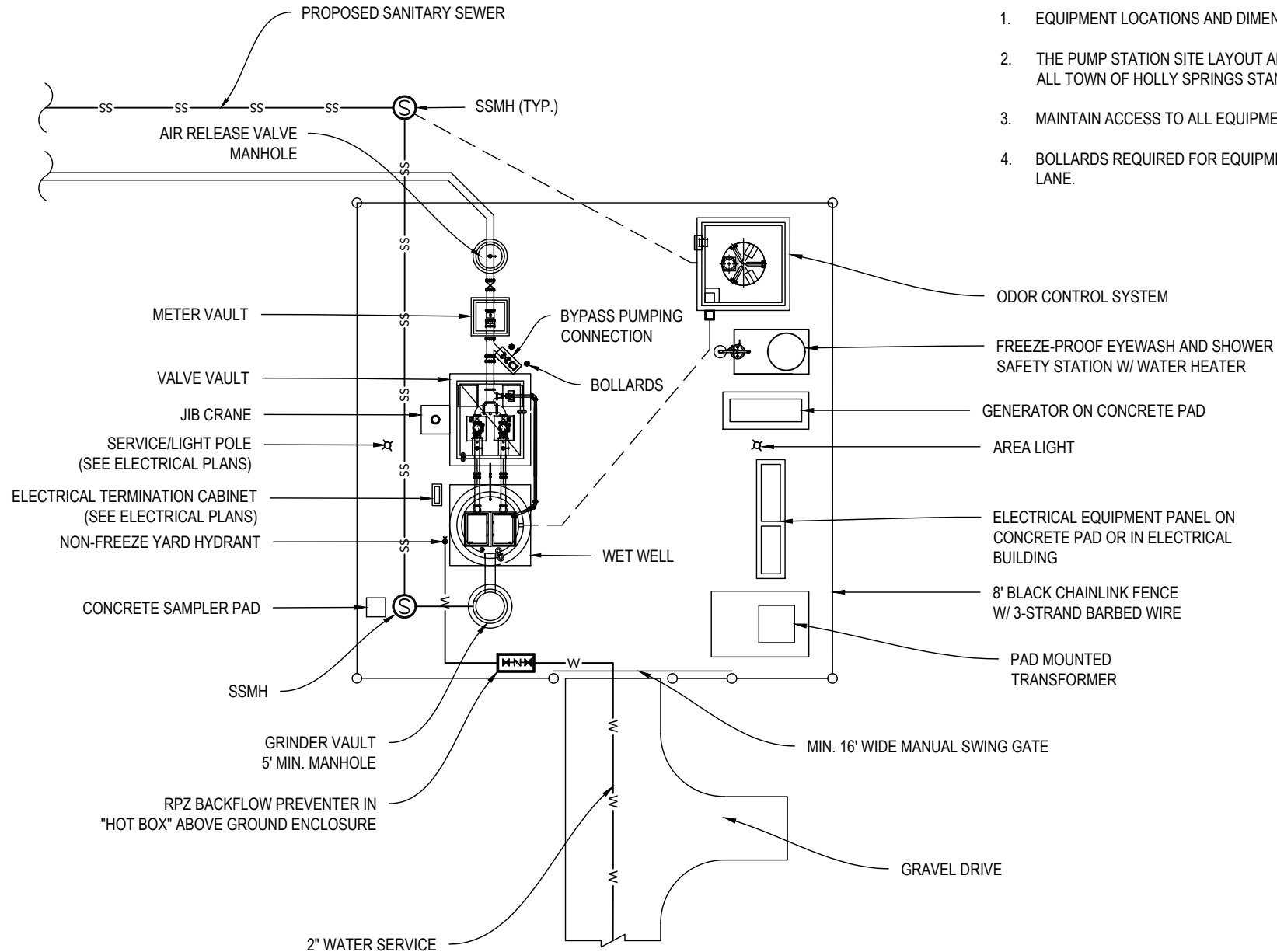
STANDARD DETAIL NUMBER: HS1301

DATE	REVISIONS
7/24/09	
6/11/24	
11/19/24	



NOTES:

1. EQUIPMENT LOCATIONS AND DIMENSIONS MAY VARY.
2. THE PUMP STATION SITE LAYOUT AND DESIGN SHALL MEET ALL TOWN OF HOLLY SPRINGS STANDARD REQUIREMENTS.
3. MAINTAIN ACCESS TO ALL EQUIPMENT AND STRUCTURES.
4. BOLLARDS REQUIRED FOR EQUIPMENT IN THE TRAVEL LANE.



1 OF 2

DRAWING NOT TO SCALE

PUMP STATION LAYOUT < 10 HP

TOWN OF HOLLY SPRINGS

STANDARD DETAIL NUMBER: HS1302

DATE

REVISIONS

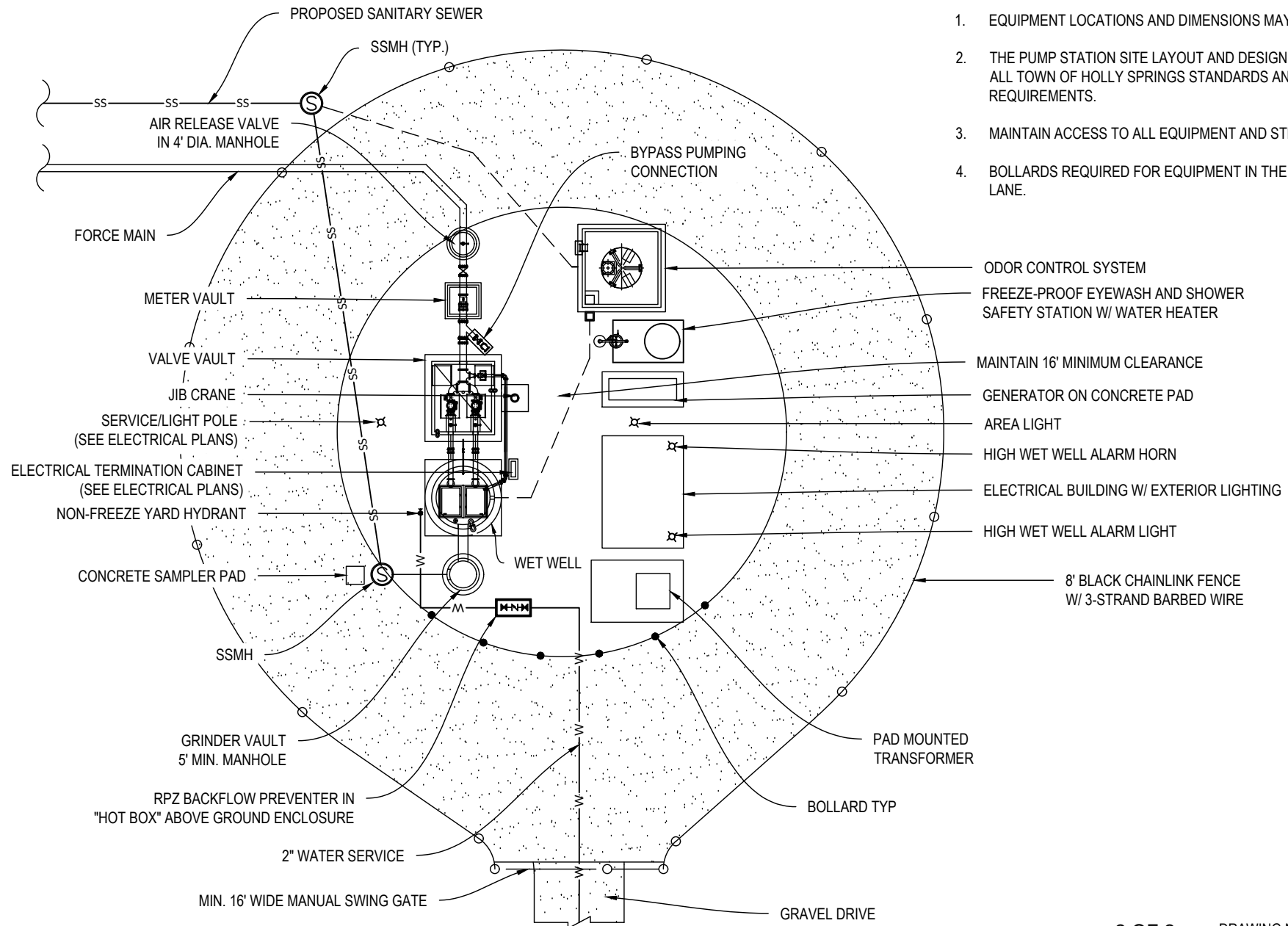
6/11/24

11/19/24



NOTES:

1. EQUIPMENT LOCATIONS AND DIMENSIONS MAY VARY.
2. THE PUMP STATION SITE LAYOUT AND DESIGN SHALL MEET ALL TOWN OF HOLLY SPRINGS STANDARDS AND REQUIREMENTS.
3. MAINTAIN ACCESS TO ALL EQUIPMENT AND STRUCTURES.
4. BOLLARDS REQUIRED FOR EQUIPMENT IN THE TRAVEL LANE.



2 OF 2

DRAWING NOT TO SCALE

TYPICAL PUMP STATION SITE LAYOUT

TOWN OF HOLLY SPRINGS

STANDARD DETAIL NUMBER: HS1302

DATE

REVISIONS

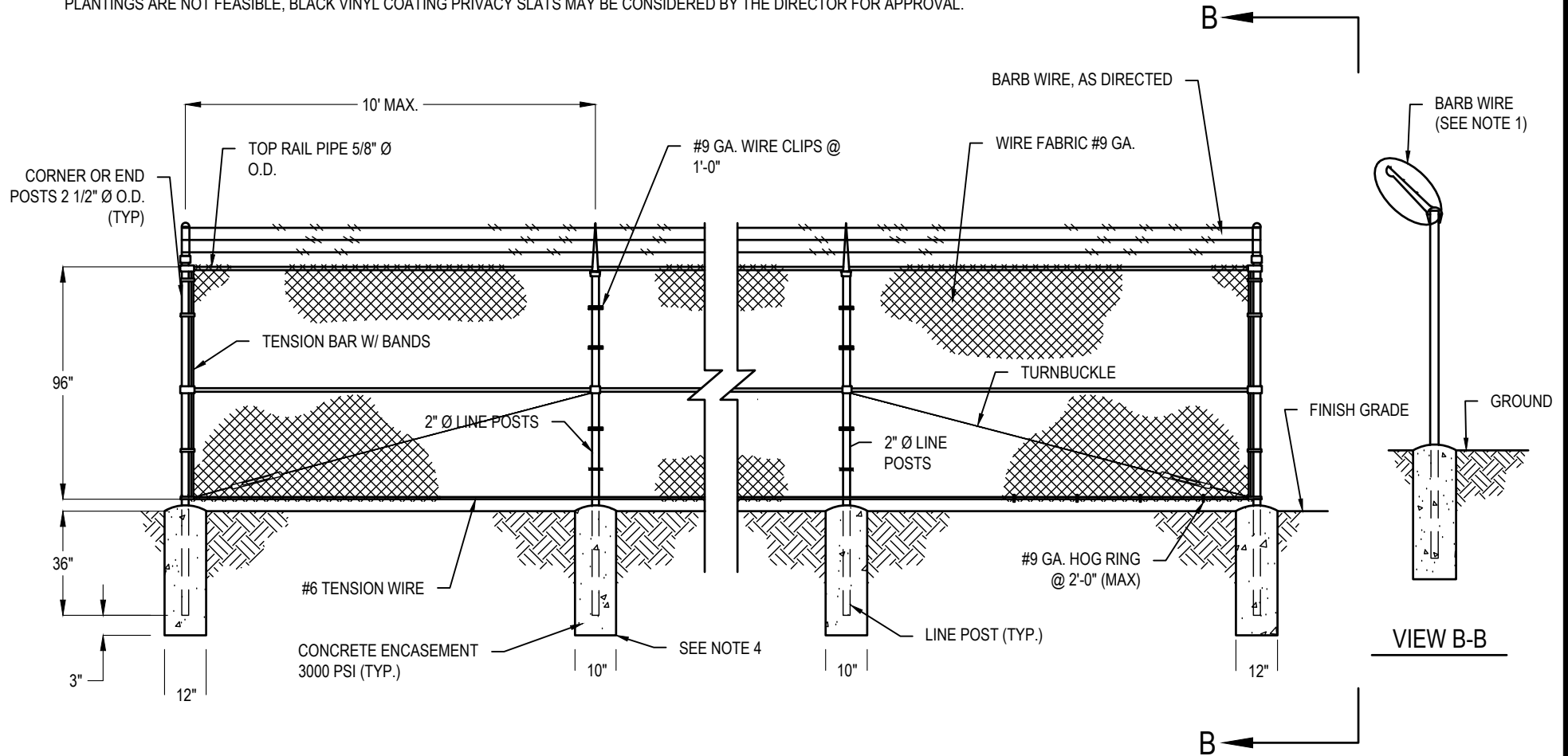
6/11/24

11/19/24



NOTES:

1. ADD 3 STRANDS OF BARB WIRE ALONG THE TOP OF FENCE AS DIRECTED (SEE SPECS).
2. ALL RAILS AND POSTS TO BE SCH. 40 GALV. STEEL PIPE WITH BLACK VINYL COATING.
3. POSTS TO BE SET IN CONCRETE.
4. IF ROCK IS ENCOUNTERED WHEN SETTING POSTS, DRILL HOLES 4-INCHES LARGER IN DIAMETER THAN POSTS AND BACKFILL TO GRADE WITH CLASS "B" CONCRETE.
5. PERIMETER OF FENCE SHALL BE SCREENED WITH PLANTINGS IN ACCORDANCE WITH TOWN ORDINANCES AND STANDARDS REQUIREMENTS. IF PLANTINGS ARE NOT FEASIBLE, BLACK VINYL COATING PRIVACY SLATS MAY BE CONSIDERED BY THE DIRECTOR FOR APPROVAL.



DRAWING NOT TO SCALE

TYPICAL CHAIN LINK FENCE

TOWN OF HOLLY SPRINGS

STANDARD DETAIL NUMBER: HS1303

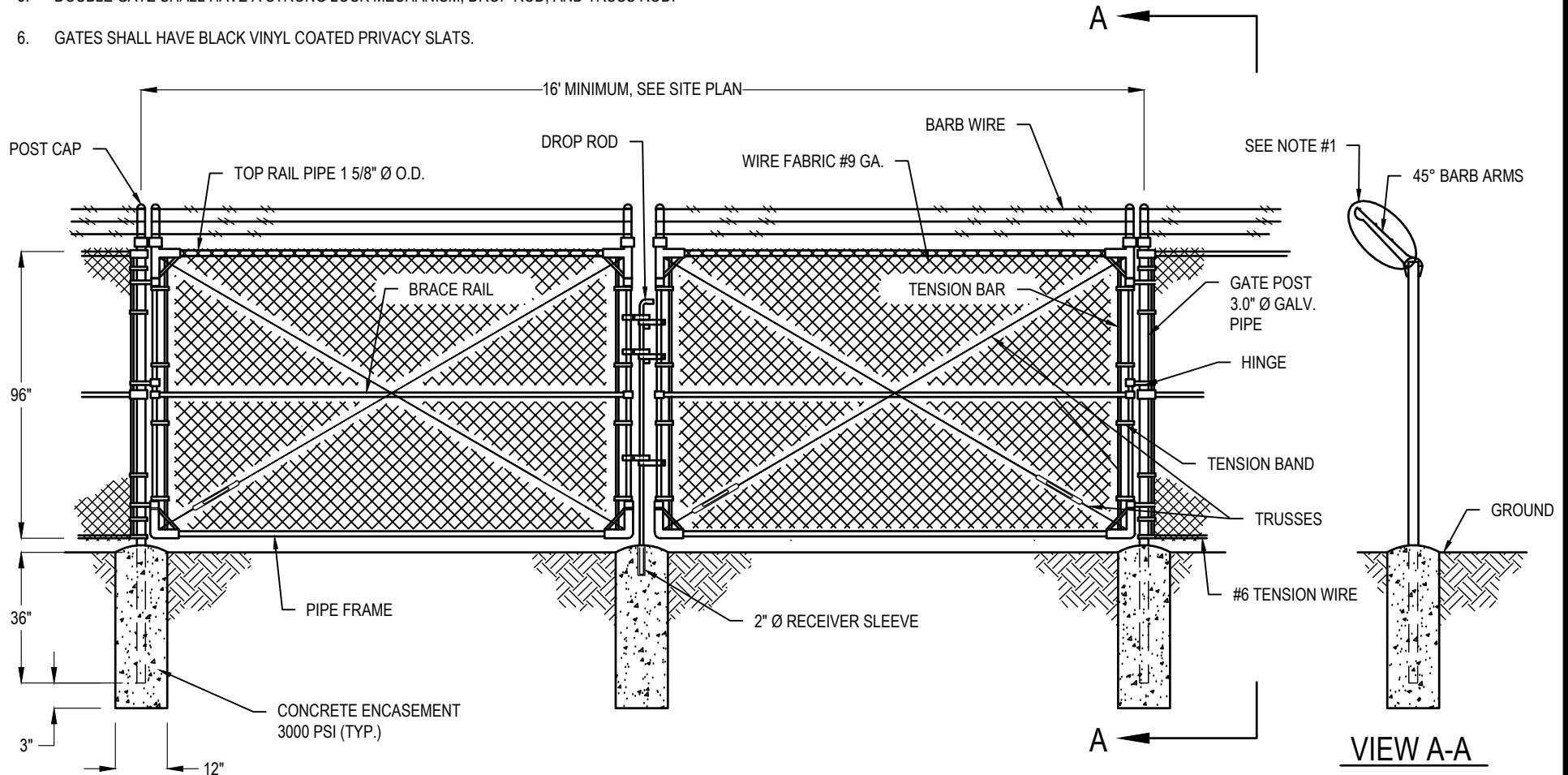
DATE	REVISIONS
6/11/24	

6/11/24



NOTES:

1. ADD 3 STRANDS OF BARB WIRE ALONG THE TOP OF FENCE AS DIRECTED (SEE SPECS).
2. ALL RAILS AND POSTS TO BE SCH. 40 GALV. STEEL PIPE WITH BLACK VINYL COATING.
3. POSTS TO BE SET IN CONCRETE
4. IF ROCK IS ENCOUNTERED WHEN SETTING POSTS, DRILL HOLES 4-INCHES LARGER IN DIAMETER THAN POSTS AND BACKFILL TO GRADE WITH CLASS "B" CONCRETE.
5. DOUBLE GATE SHALL HAVE A STRONG LOCK MECHANISM, DROP ROD, AND TRUSS ROD.
6. GATES SHALL HAVE BLACK VINYL COATED PRIVACY SLATS.



DRAWING NOT TO SCALE

TYPICAL SECURITY DOUBLE GATE

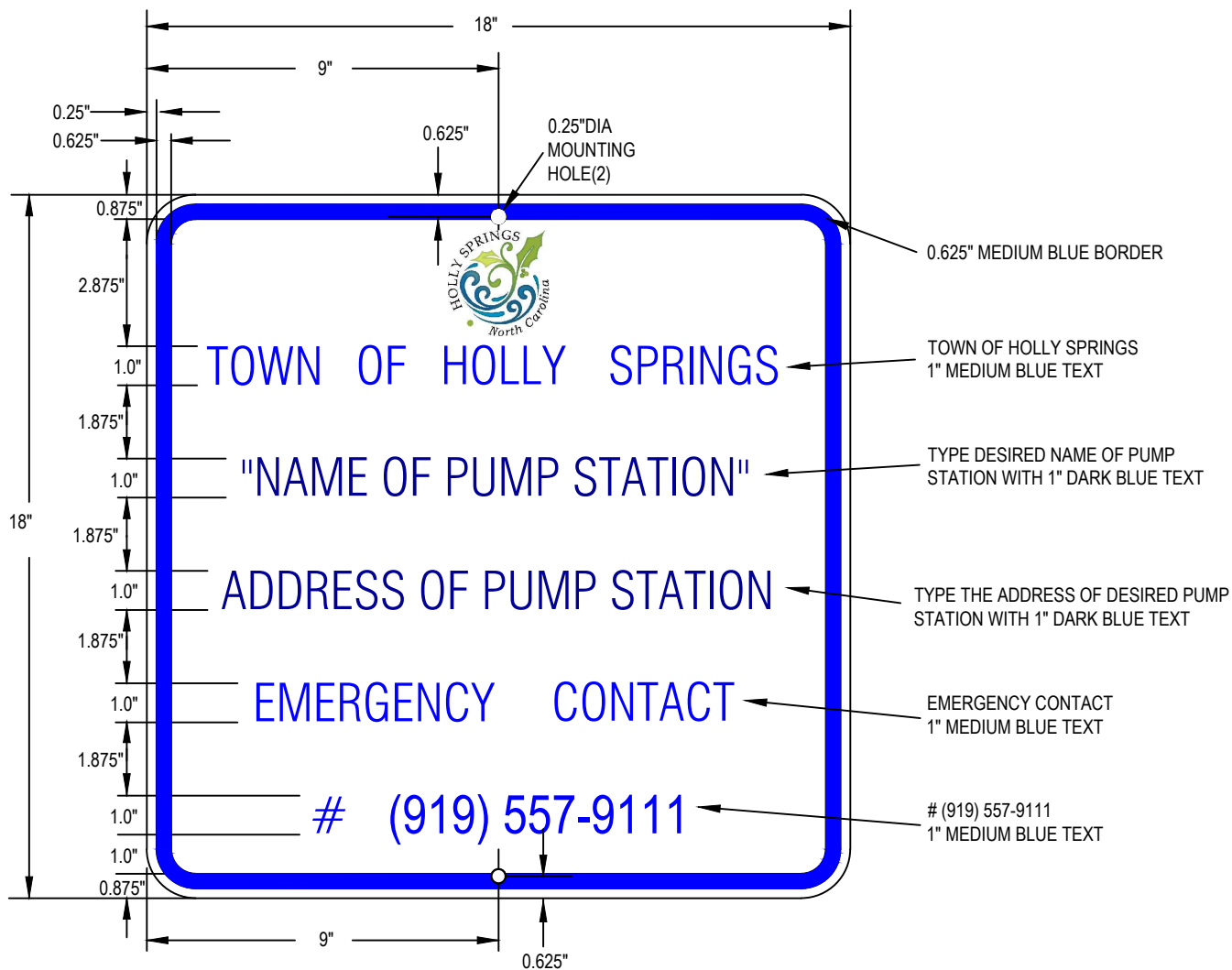
TOWN OF HOLLY SPRINGS

STANDARD DETAIL NUMBER: HS1304

DATE REVISIONS

6/11/24





NOTES:

1. 18" x 18" NON-REFLECTIVE 18 GAUGE STEEL
2. TEXT TO BE CENTERED ON SIGN

DRAWING NOT TO SCALE

STANDARD PUMP STATION LOCATION SIGN

TOWN OF HOLLY SPRINGS

STANDARD DETAIL NUMBER: HS1305

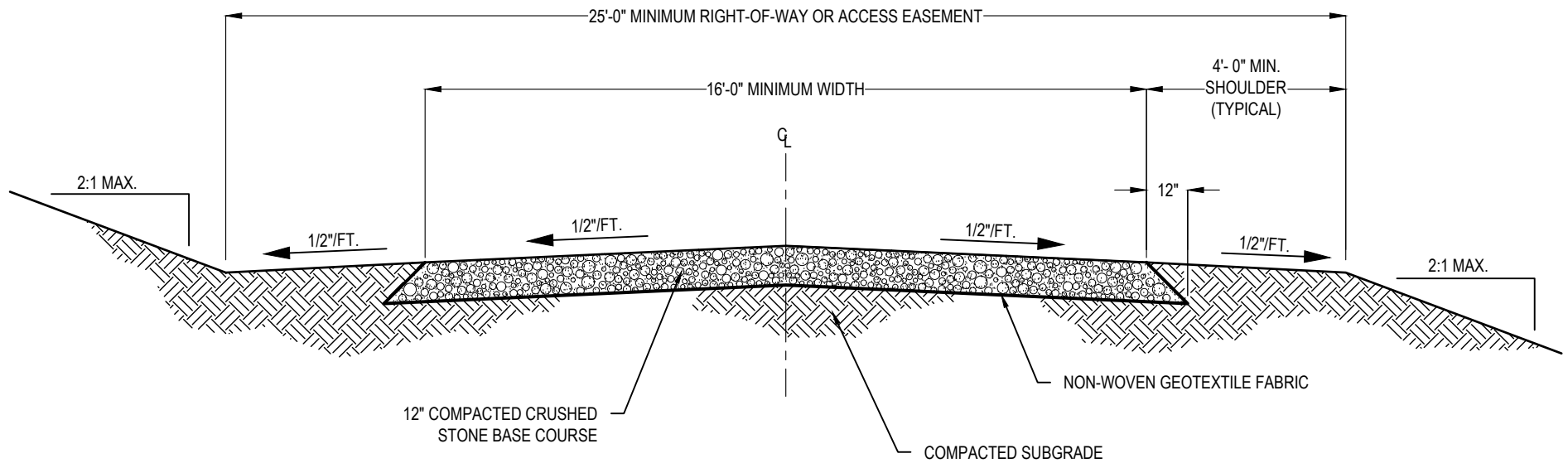
DATE

REVISIONS

7/24/09

6/11/24





NOTES:

1. MAXIMUM ROADWAY SHALL BE 10%.
2. THE SITE SHALL FEATURE ADEQUATE TURN AROUND AREAS FOR SERVICE VEHICLES IN ACCORDANCE WITH SPECIFICATION SECTION 13.
3. MUST HAVE POSITIVE DRAINAGE.

DRAWING NOT TO SCALE

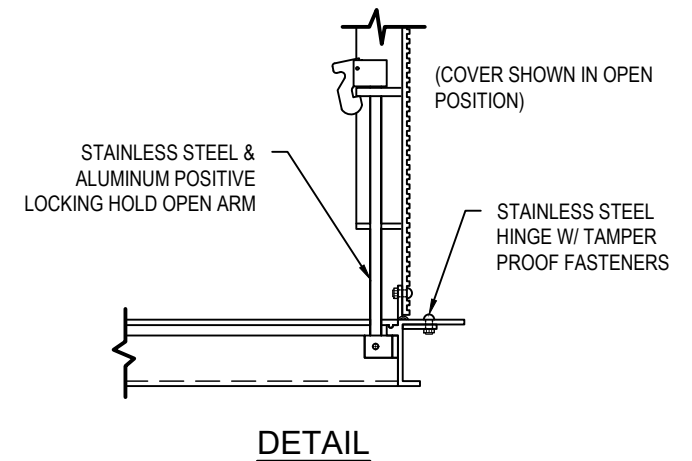
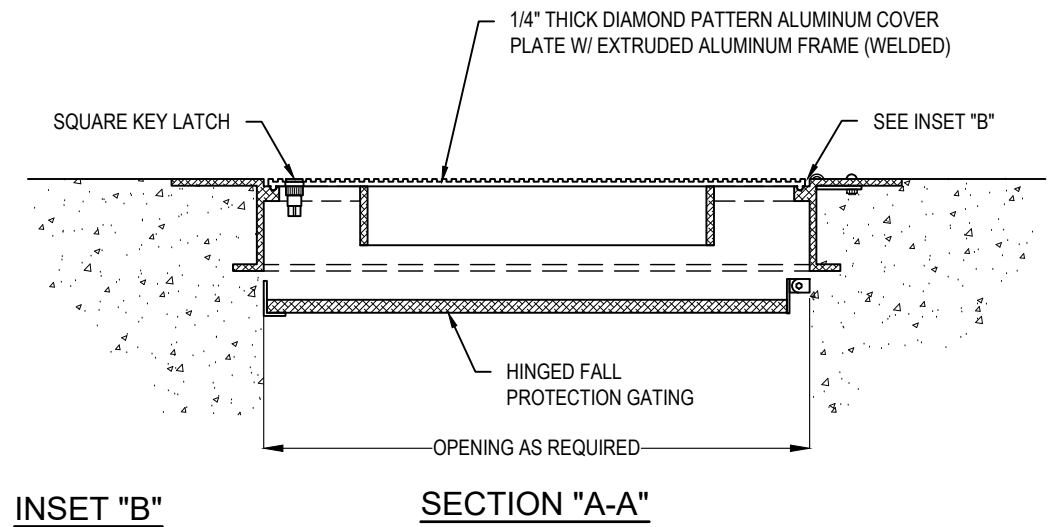
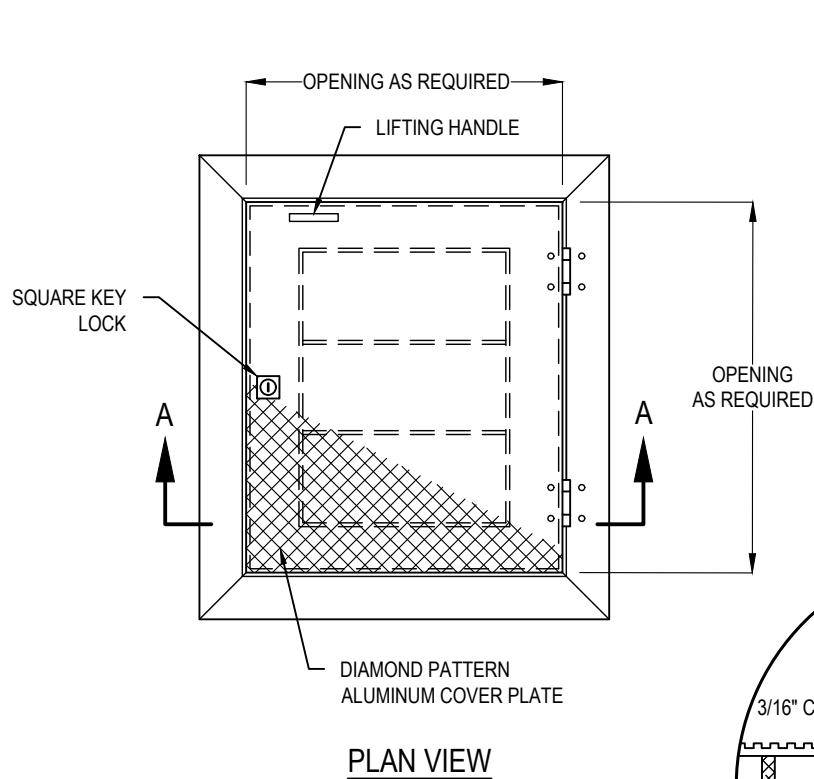
PUMP STATION ACCESS ROAD

TOWN OF HOLLY SPRINGS

STANDARD DETAIL NUMBER: HS1306

DATE	REVISIONS
6/11/24	





NOTES:

1. ALL ALUMINUM SURFACES IN CONTACT WITH CONCRETE OR GROUT SHALL BE COATED WITH BITUMINOUS MATERIAL FOR PROTECTION.
2. HATCHES SHALL BE SINGLE OR DOUBLE HATCH DEPENDING ON OPENING SIZE AND MANUFACTURER'S RECOMMENDATIONS.

DRAWING NOT TO SCALE

WET WELL HATCH

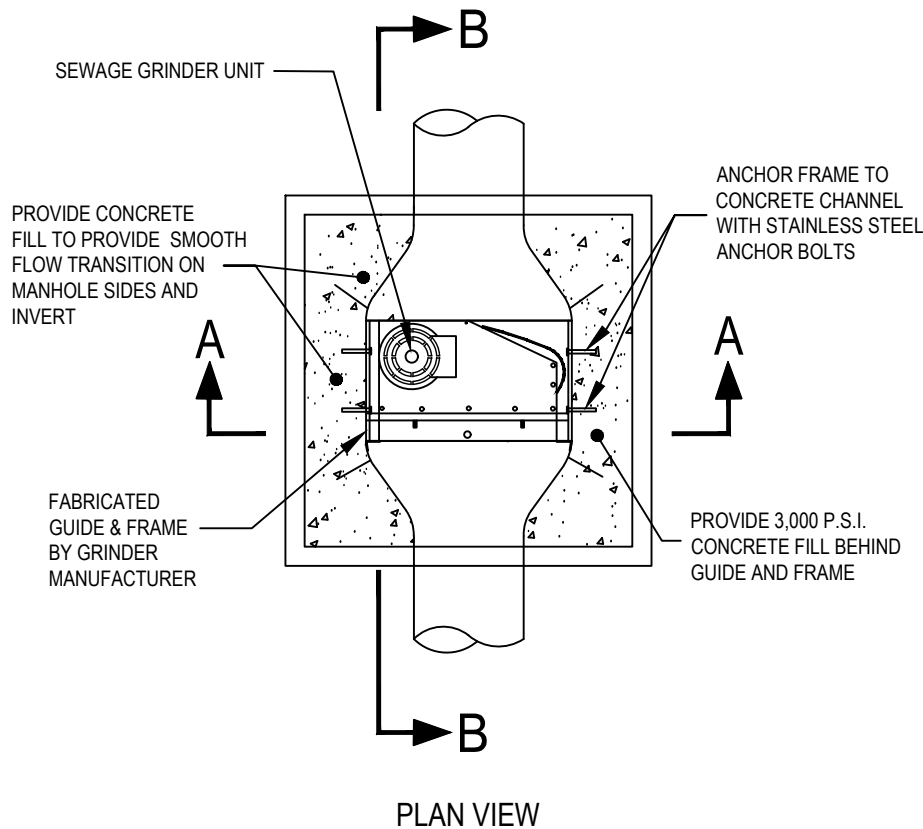
TOWN OF HOLLY SPRINGS

STANDARD DETAIL NUMBER: HS1307

DATE **REVISIONS**

6/11/24

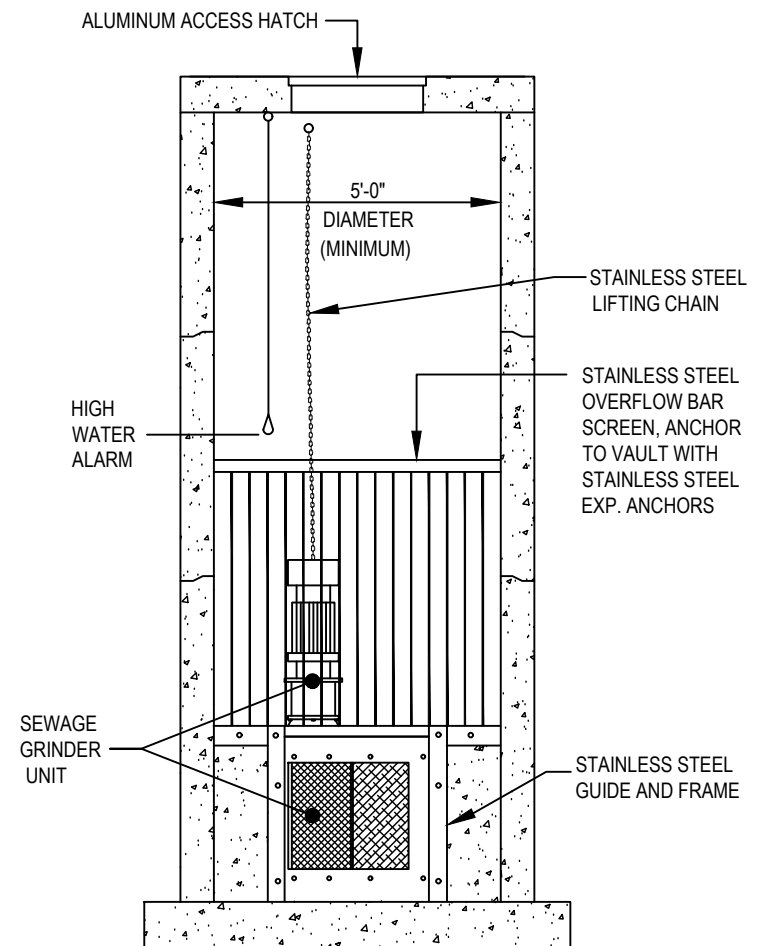




SEE SHEET 2 OF 2 FOR SECTION "B-B"

NOTES:

1. THERE SHALL ONLY BE A SINGLE INFLUENT LINE INTO THE GRINDER VAULT.
2. ALUMINUM ACCESS HATCH SHALL BE SIZED TO ALLOW INSTALLATION AND REMOVAL OF GRINDER UNIT.
3. COAT INTERIOR OF VAULT WITH APPROVED EPOXY OR POLYURETHANE COATING APPLIED PER THE MANUFACTURER'S SPECIFICATIONS. COATINGS SHALL CONFORM TO TOWN OF HOLLY SPRINGS STANDARDS SECTION 13.



SECTION "A-A"

1 OF 2

DRAWING NOT TO SCALE

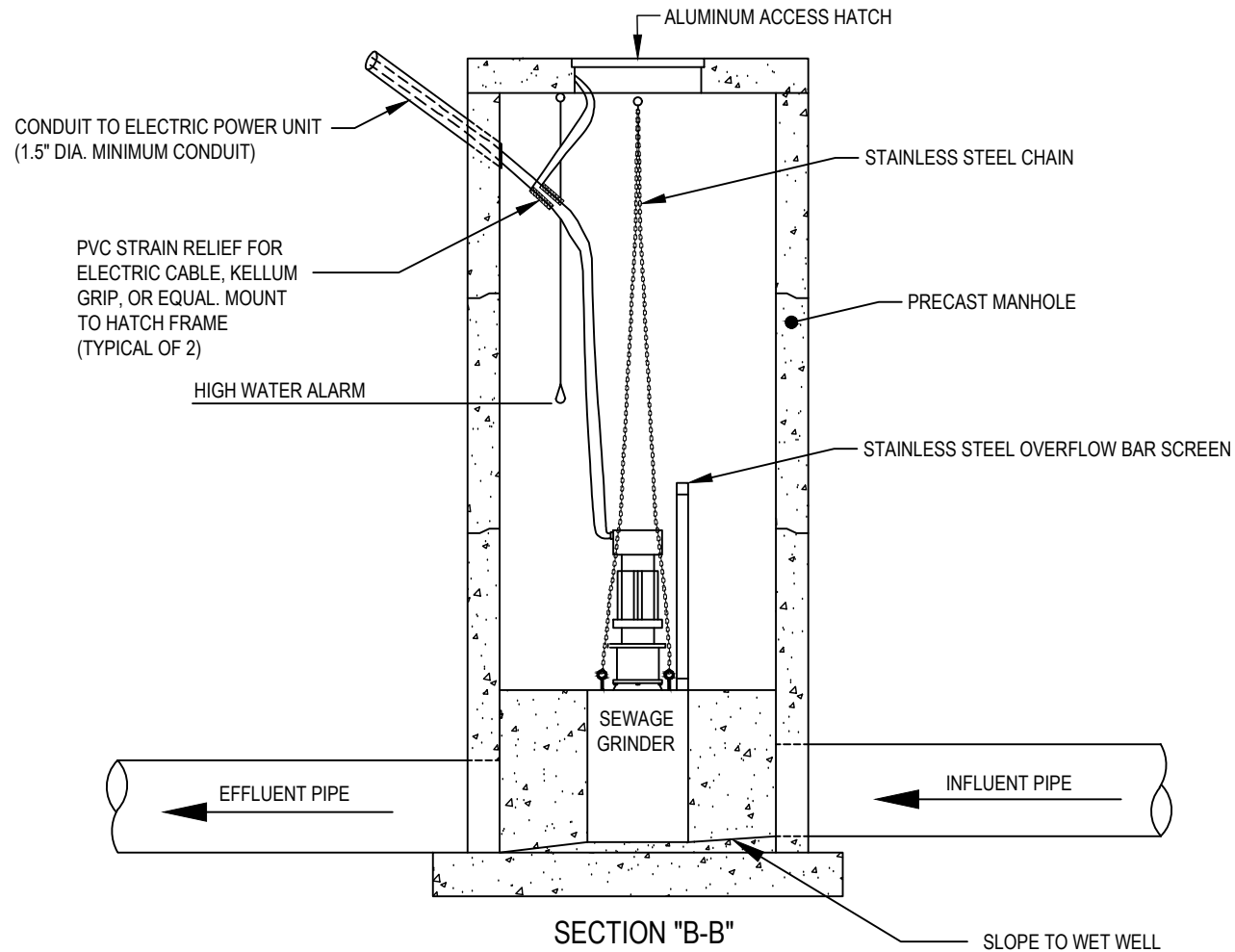
SEWAGE GRINDER VAULT

TOWN OF HOLLY SPRINGS

STANDARD DETAIL NUMBER: HS1308

DATE	REVISIONS
8/30/19	
8/17/23	RJ/RI/TF
6/11/24	





SEE SHEET 1 OF 2 FOR SECTION "A-A"

NOTES:

1. ALUMINUM ACCESS HATCH SHALL BE SIZED TO ALLOW INSTLLATION AND REMOVAL OF GRINDER UNIT.

2 OF 2

DRAWING NOT TO SCALE

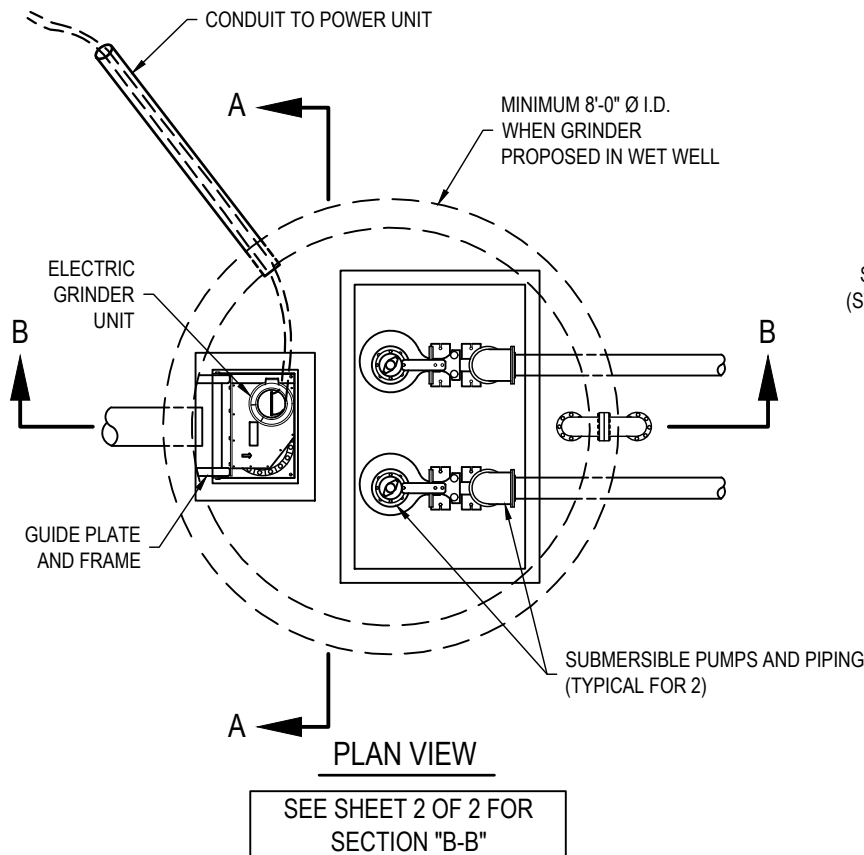
SEWAGE GRINDER VAULT

TOWN OF HOLLY SPRINGS

STANDARD DETAIL NUMBER: HS1308

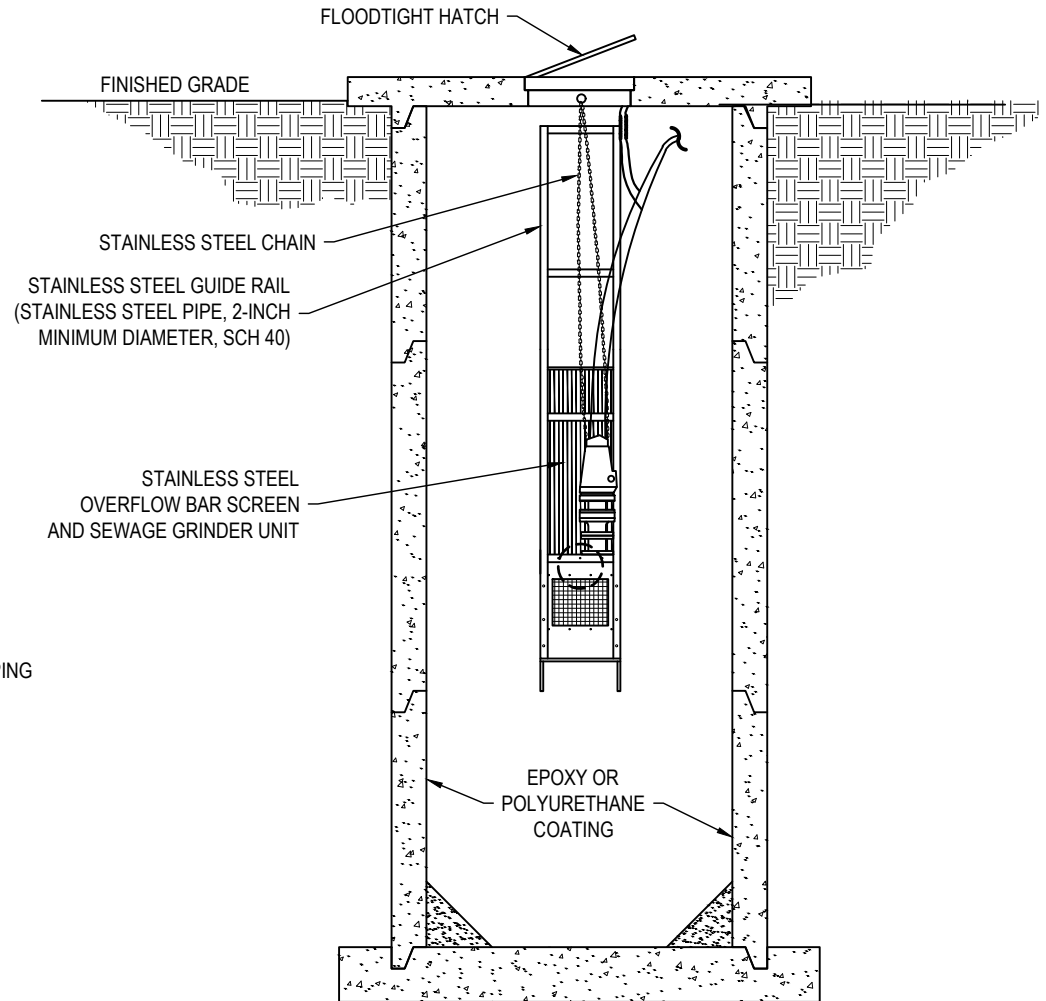
DATE	REVISIONS
8/30/19	
8/17/23	RJ/RJ/TF
6/11/24	





NOTE:

1. ACCESS HATCH SHALL BE SIZED TO ALLOW FOR INSTALLATION AND REMOVAL OF GRINDER UNIT.
2. ALL BOLTED CONNECTION (INCLUDING PIPE FLANGES) INSIDE THE WETWELL SHALL BE MADE USING STAINLESS STEEL BOLTS, NUTS, AND WASHERS.
3. ALL WETWELLS MUST BE CONCENTRIC.
4. ENGINEER SHALL ENSURE WETWELL HAS SUFFICIENT CONCRETE FOR ANCHORING. BUOYANCY CALCULATIONS SHALL BE SUBMITTED.
5. STATION SHALL MEET REQUIREMENTS IN THE TOWN'S STANDARD RELATED TO ELEVATION AND/OR PROTECTION FROM FLOODING.



1 OF 2

DRAWING NOT TO SCALE

SEWAGE GRINDER UNIT (WET WELL INSTALLATION)

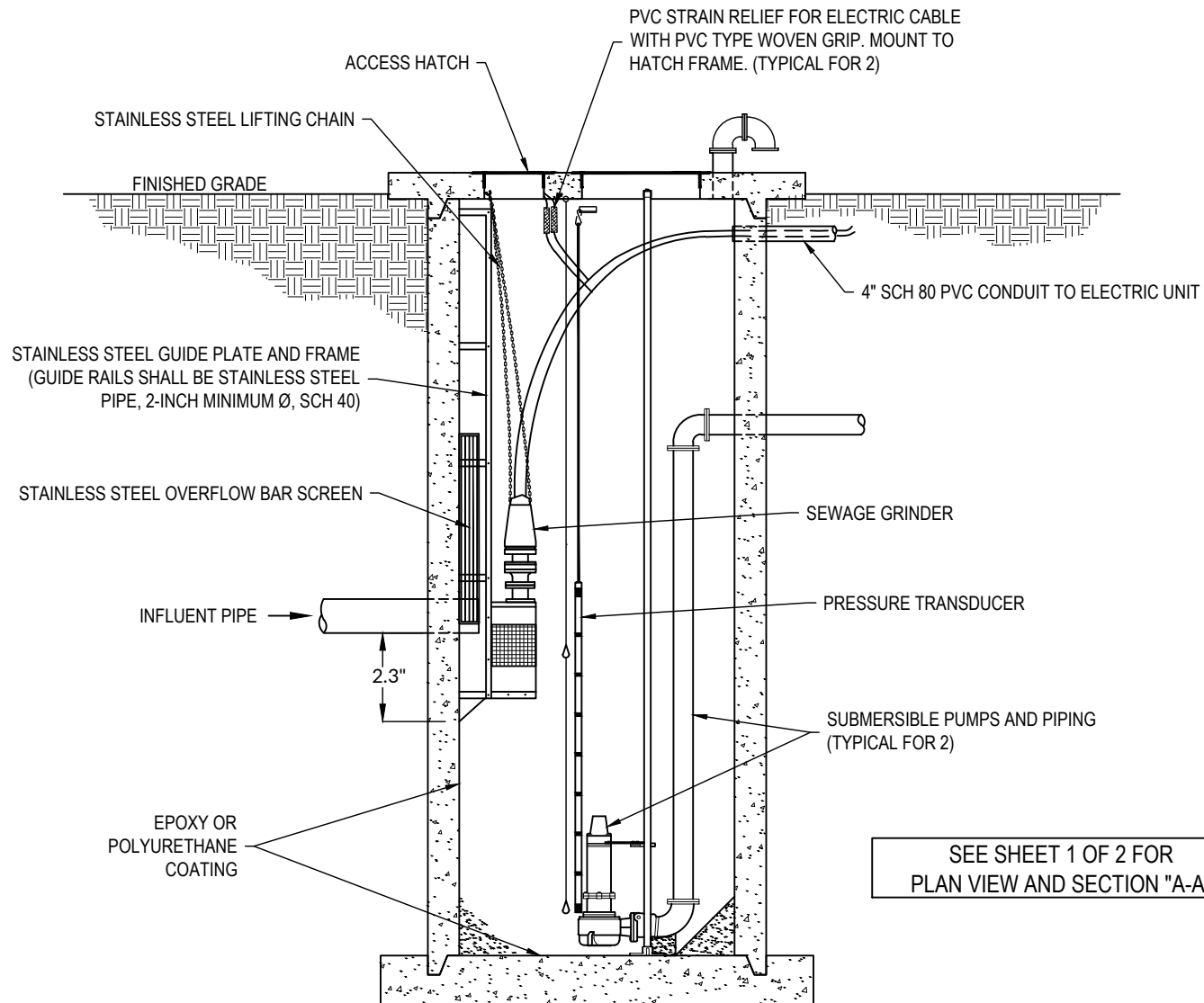
TOWN OF HOLLY SPRINGS

STANDARD DETAIL NUMBER: HS1309

DATE REVISIONS

3/23/21
6/11/24





SECTION "B-B"

SEE SHEET 1 OF 2 FOR
PLAN VIEW AND SECTION "A-A"

2 OF 2

DRAWING NOT TO SCALE

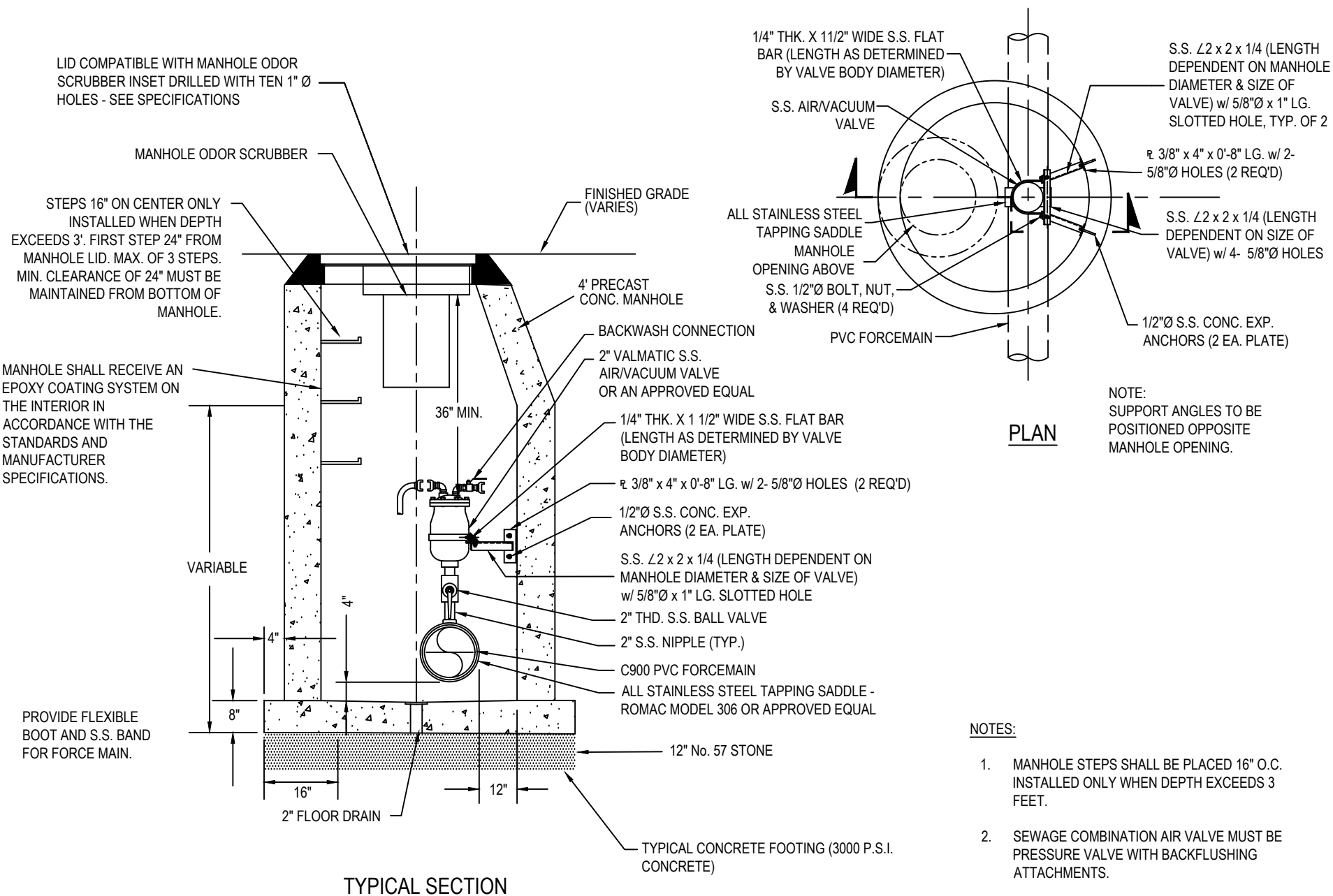
SEWAGE GRINDER UNIT (WET WELL INSTALLATION)

TOWN OF HOLLY SPRINGS

STANDARD DETAIL NUMBER: HS1309

DATE	REVISIONS
3/23/21	
6/11/24	





DRAWING NOT TO SCALE

COMBINATION SEWAGE AIR VALVE MANHOLE WITH ODOR SCRUBBER

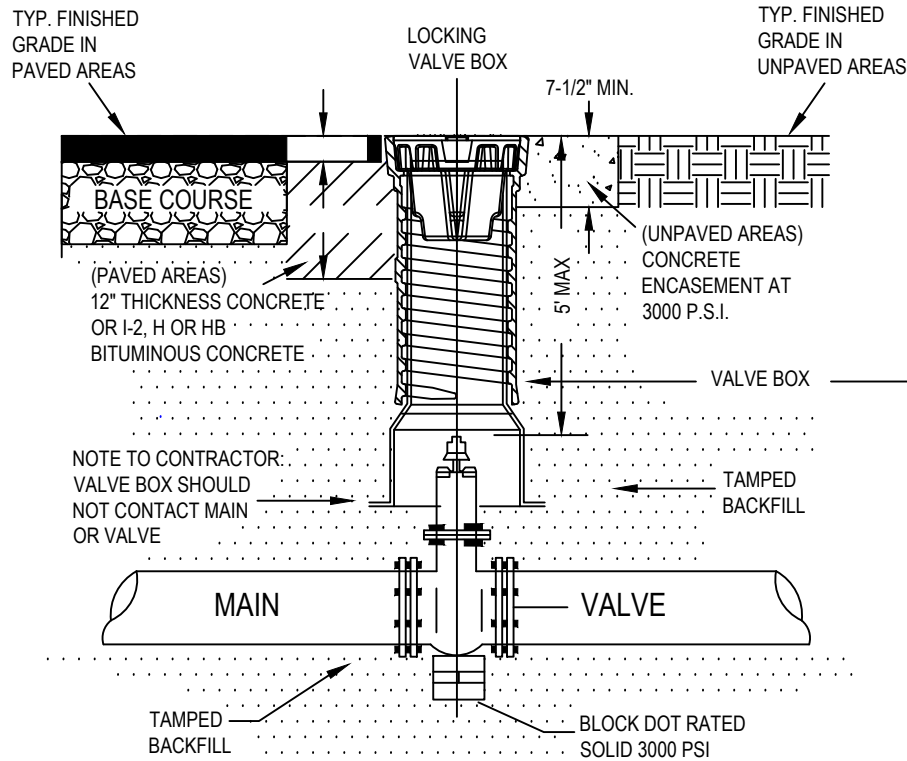
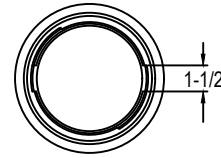
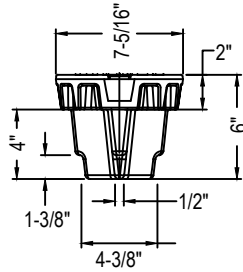
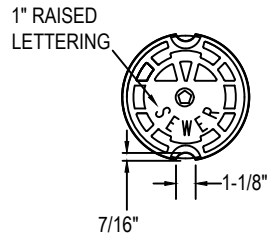
TOWN OF HOLLY SPRINGS

STANDARD DETAIL NUMBER: HS1311

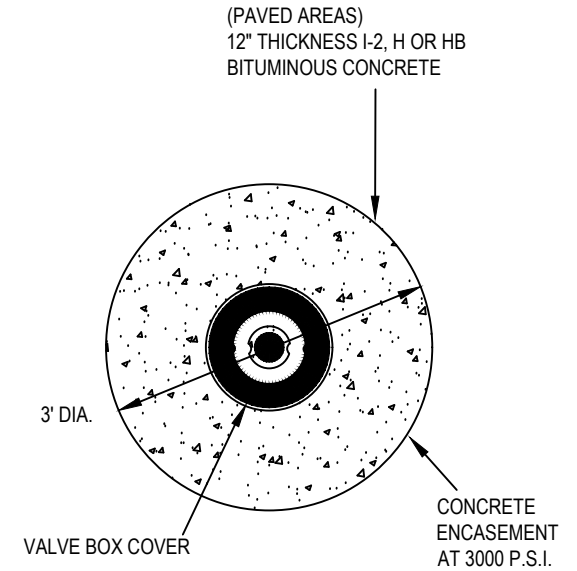
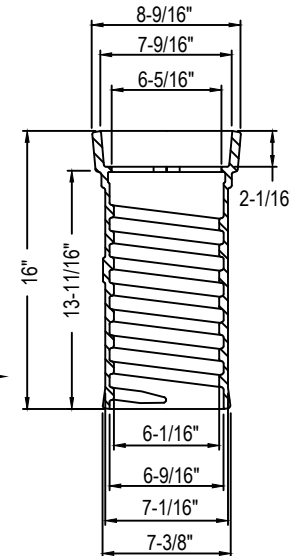
DATE REVISIONS

6/11/24





SECTION



PLAN

NOTES:

1. D.I.P. SHALL BE USED FOR VALVE BOX EXTENSIONS, PVC MAY BE SUBSTITUTED IN NON-TRAFFIC AREAS.
2. VALVE OPERATING NUT MUST BE EXTENDED SO THAT THE DEPTH IS NO GREATER THAN 5' FROM THE SURFACE USING A MANUFACTURER APPROVED EXTENSION KIT.
3. PRECAST CONCRETE ENCASEMENT IS ALLOWED OUTSIDE OF PAVED AREAS.
4. DOMESTIC MADE IN USA.

DRAWING NOT TO SCALE

SEWER VALVE BOX INSTALLATION

TOWN OF HOLLY SPRINGS

STANDARD DETAIL NUMBER: HS1312

DATE REVISIONS

8/30/19

9/22/23

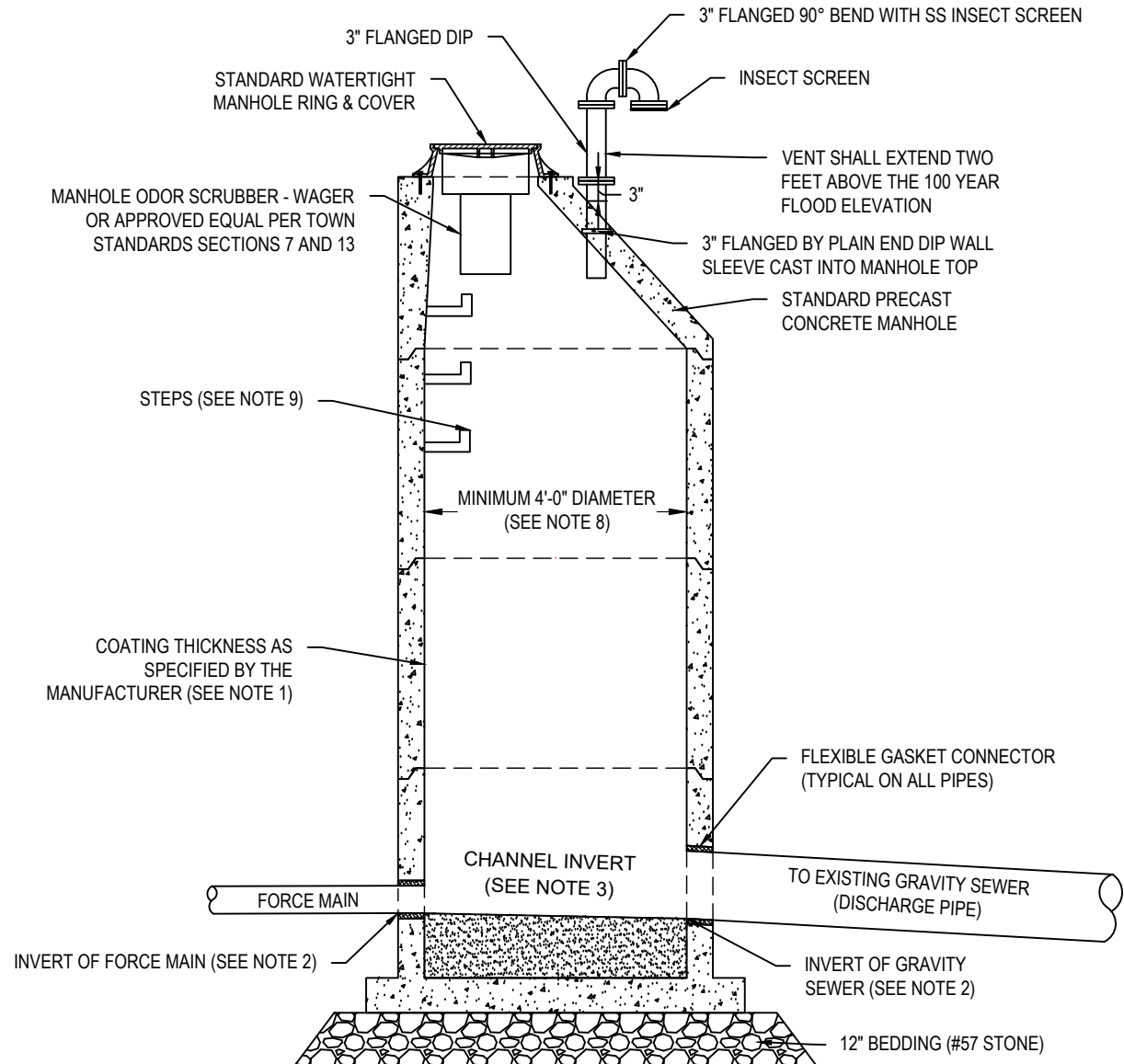
6/11/24

RJ/RJ



NOTES:

1. COAT INTERIOR OF MANHOLE WITH APPROVED EPOXY OR POLYURETHANE COATING APPLIED PER THE MANUFACTURER'S SPECIFICATIONS. COATINGS SHALL CONFORM TO TOWN OF HOLLY SPRINGS STANDARDS SECTION 13.
2. ELEVATION OF FORCE MAIN INVERT SHALL BE 1/10 OF A FOOT HIGHER THAN GRAVITY DISCHARGE INVERT ELEVATION. INSTALLATIONS GREATER THAN 10-FT WILL REQUIRE APPROVAL BY THE DIRECTOR.
3. PROVIDE SMOOTH CHANNEL FROM FORCE MAIN TO GRAVITY SEWER.
4. FORCE MAINS SHALL BE CONSTRUCTED OF C900 PVC PIPE AND SHALL CONFORM TO TOWN STANDARDS SECTION 13.
5. ANY DUCTILE IRON PIPE SHALL BE LINED WITH PROTECTO 401 AND CONFIRM TO ALL CRITERIA IN TOWN STANDARDS SECTION 13.
6. ALL FORCE MAINS SHALL BE SUBJECTED TO A HYDROSTATIC TEST ACCORDING TO THE PROVISIONS OF TOWN STANDARDS SECTION 13.
7. A CHECK VALVE AND PLUG VALVE SHALL BE PROVIDED FOR THE DISCHARGE LINE OF EACH PUMP.
8. MANHOLE DIAMETER SHALL BE CAPABLE OF RECEIVING FLOW WITHOUT EXCEEDING 50% SURCHARGE CONDITIONS IN THE EXISTING GRAVITY SEWER.
9. STEPS 16" ON CENTER ONLY INSTALLED WHEN DEPTH EXCEEDS 3'. FIRST STEP 24" FROM MANHOLE LID. MAXIMUM OF 3 STEPS. MINIMUM CLEARANCE OF 24" MUST BE MAINTAINED FROM BOTTOM OF MANHOLE.



DRAWING NOT TO SCALE

FORCE MAIN DISCHARGE MANHOLE

TOWN OF HOLLY SPRINGS

STANDARD DETAIL NUMBER: HS1313

DATE	REVISIONS
8/30/19	
6/21/23	RJ
6/11/24	

