

NOTE:  
THIS DETAIL TO BE USED OUTSIDE OF RIGHT OF WAY ONLY.

DRAWING NOT TO SCALE

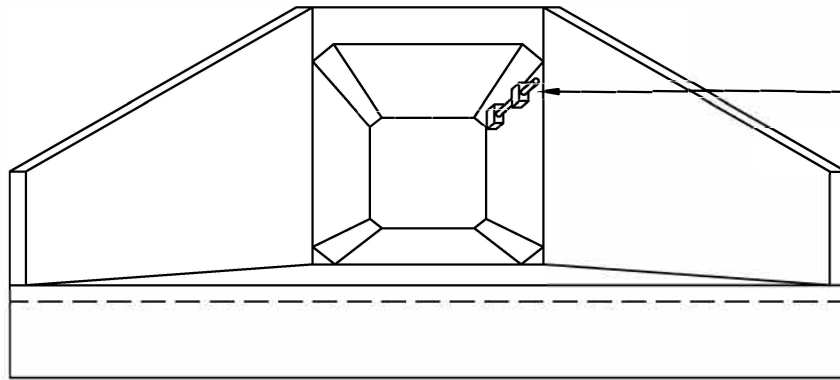
*STANDARD EXTERIOR HANDRAIL DETAIL*  
*TOWN OF HOLLY SPRINGS ENGINEERING DEPARTMENT*

STANDARD DETAIL NUMBER: HS001

DATE REVISIONS

7/24/09





**FRONT VIEW**

LITHONIA WALL-PAK  
TWP150F w/ TWPWG WIRE  
GUARD, OR APPROVED EQUAL

JOINTS TO BE SEALED WITH  
MASTIC THEN GROUTED WITH  
NON-SHRINK PORTLAND CEMENT  
GROUT

HEADWALLS  
w/ WINGWALLS  
REQUIRED ON  
BOTH ENDS

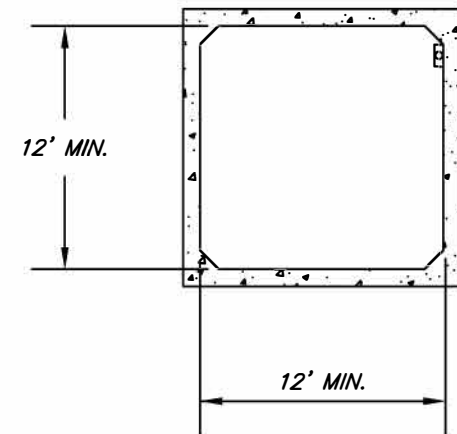
LIGHT

CONDUIT

SEALING OF FIXTURES TO BE  
DESIGNED IN ACCORDANCE w/ IES STANDARDS

PRECAST CONCRETE BOX CULVERT CONFORMING  
TO ASTM C 789M OR ASTM C 850M

0.5% MIN. SLOPE



**NOTES:**

1. APPROPRIATE SIGNAGE MAY BE REQUIRED AT ENTRANCE TO INDICATE NARROWING TRAIL WIDTH AND LIMITED VERTICAL CLEARANCE.
2. SECURITY CAMERAS TO BE PLACED ON BOTH ENDS OF UNDERPASS. TYPE TO BE APPROVED BY TOWN OF HOLLY SPRINGS.
3. WALLS, HEADWALLS, WINGWALLS AND ROOF TO BE PAINTED SW7050 "USEFUL GRAY"

DRAWING NOT TO SCALE

**PRECAST CONCRETE PEDESTRIAN/BICYCLE UNDERPASS**

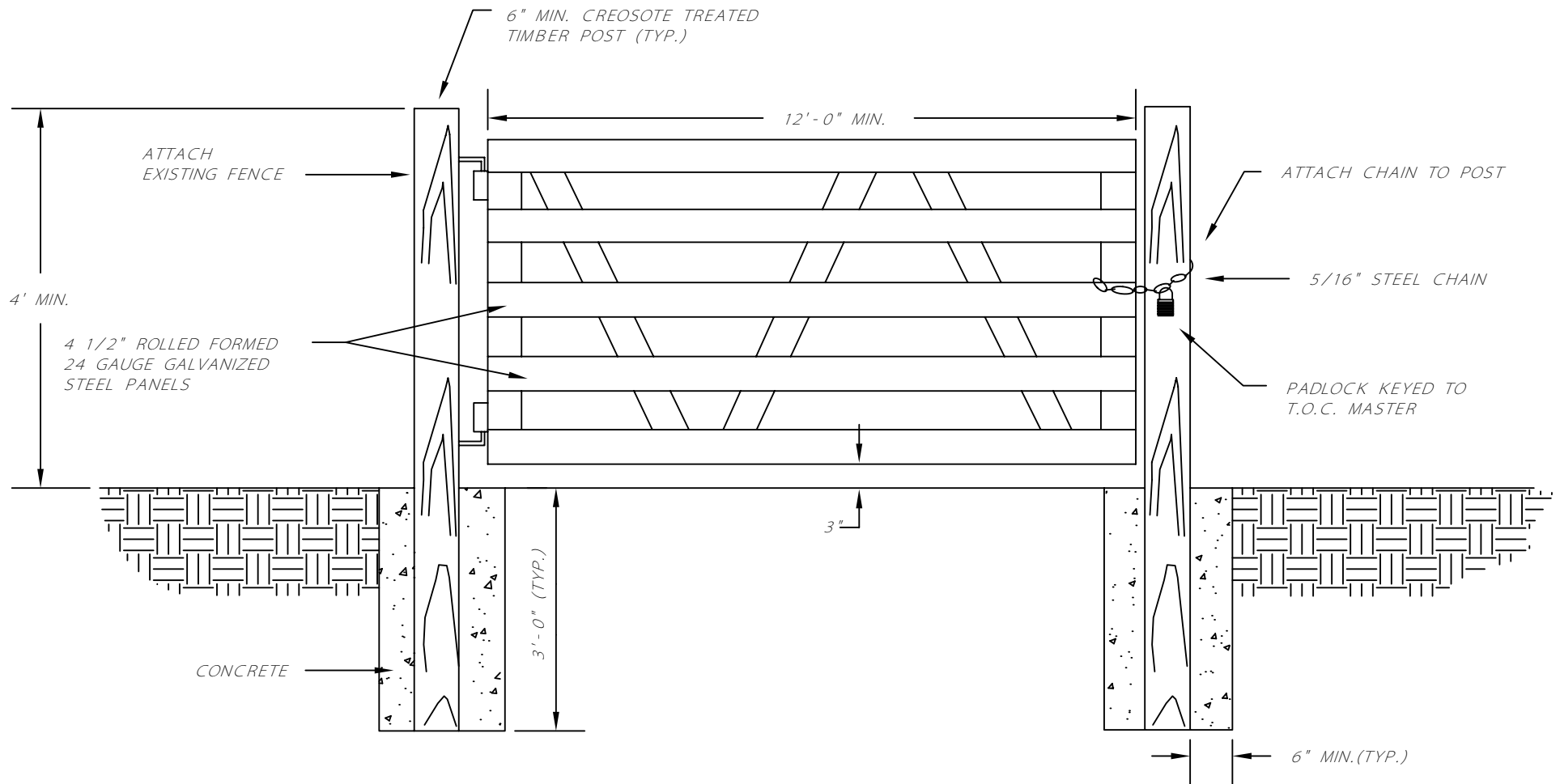
TOWN OF HOLLY SPRINGS ENGINEERING DEPARTMENT

STANDARD DETAIL NUMBER: **HS002**

DATE REVISIONS

10/17/22





#### NOTES:

A FENCE GATE IS REQUIRED AT THE LOCATION WHERE THE SANITARY SEWER LINE CROSSES A FENCE. IN RESIDENTIAL AREAS THE FENCE GATE MAY BE DELETED OR ALTERNATE FENCE GATES MAY BE USED AS APPROVED BY THE DIRECTOR OF ENGINEERING.

DRAWING NOT TO SCALE

## FENCE GATE

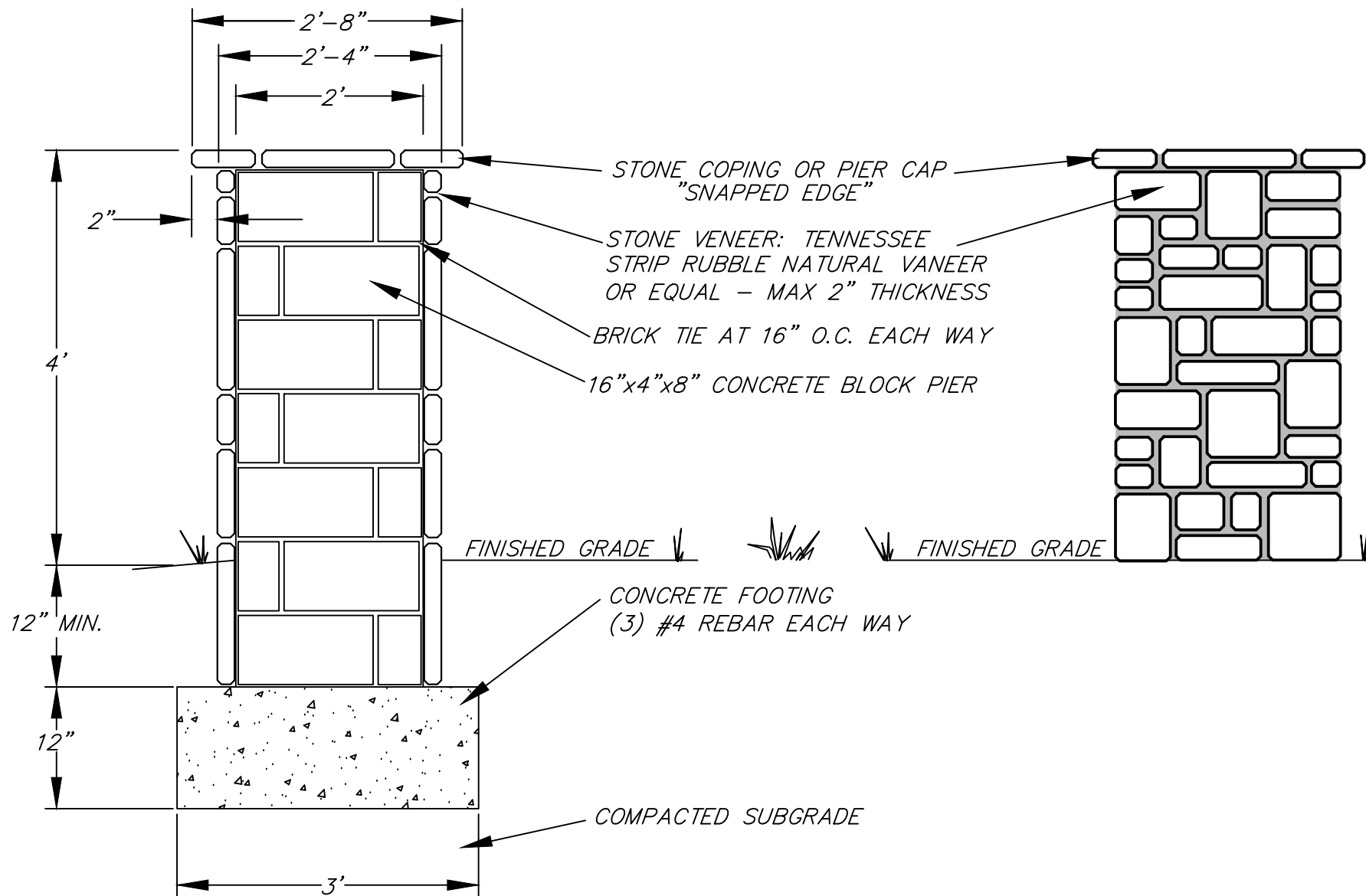
TOWN OF HOLLY SPRINGS ENGINEERING DEPARTMENT

STANDARD DETAIL NUMBER: HS003

DATE REVISIONS

7/24/09





DRAWING NOT TO SCALE

## STONE COLUMN DETAIL

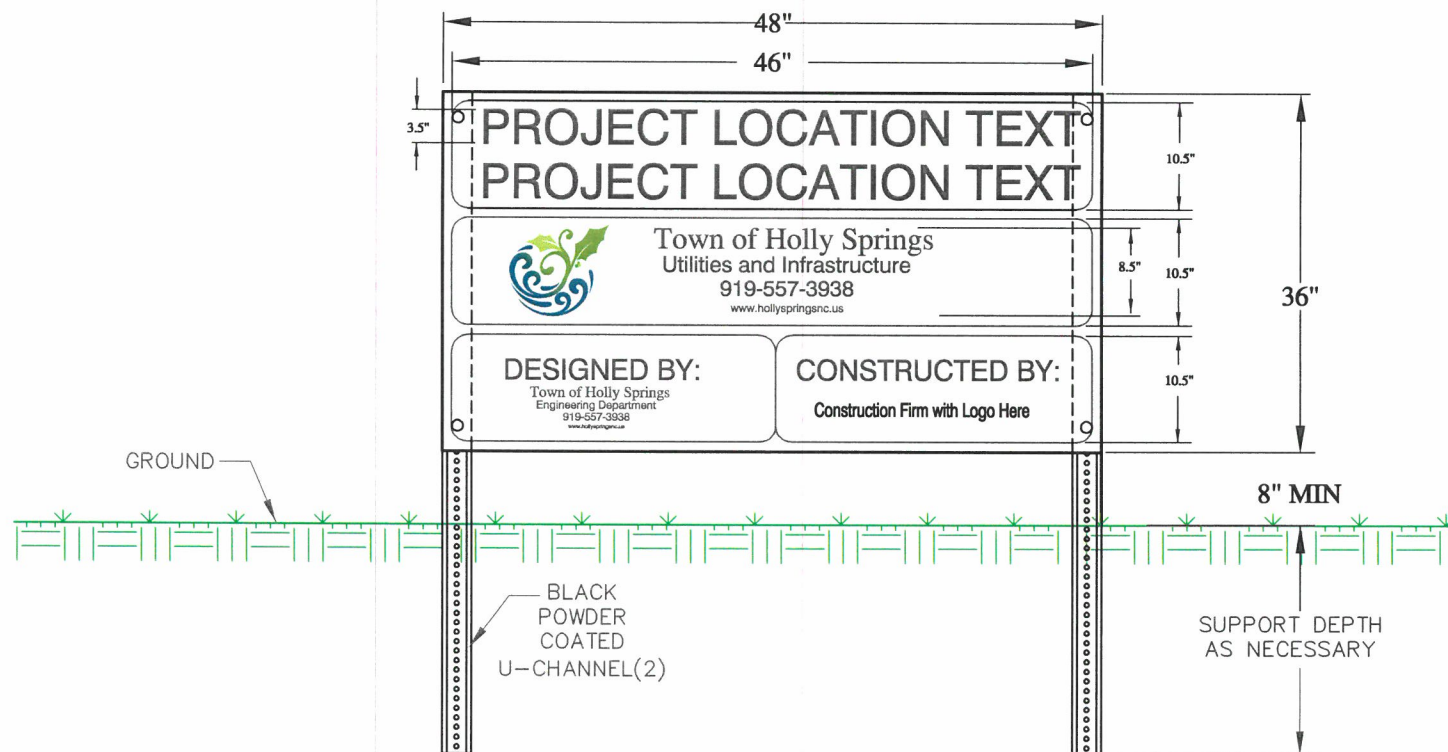
TOWN OF HOLLY SPRINGS ENGINEERING DEPARTMENT

STANDARD DETAIL NUMBER: **HS004**

DATE REVISIONS

3/23/20





NOTES:

1. 36" X 48" X 1/2" MDO SIGN WITH U-CHANNEL POSTS.
2. INDIVIDUAL PANELS TO BE SECURED WITH WEATHER RESISTANT SCREWS AND WING NUTS.

DRAWING NOT TO SCALE

# PROJECT IDENTIFICATION SIGN

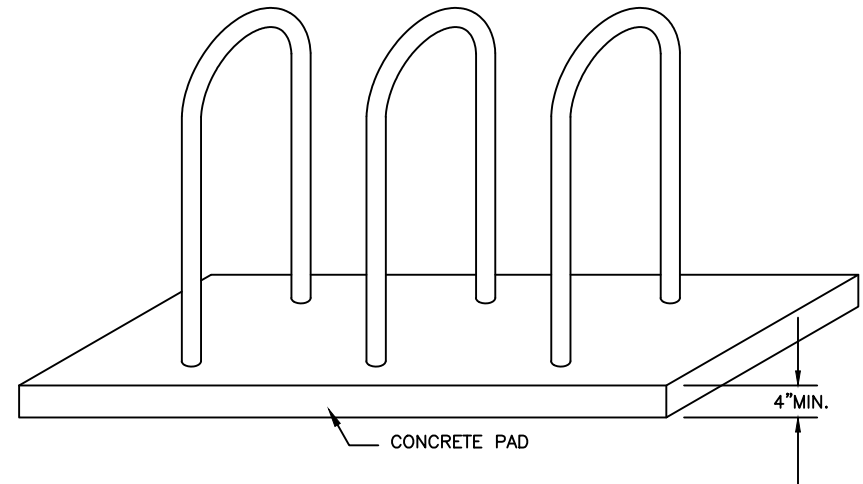
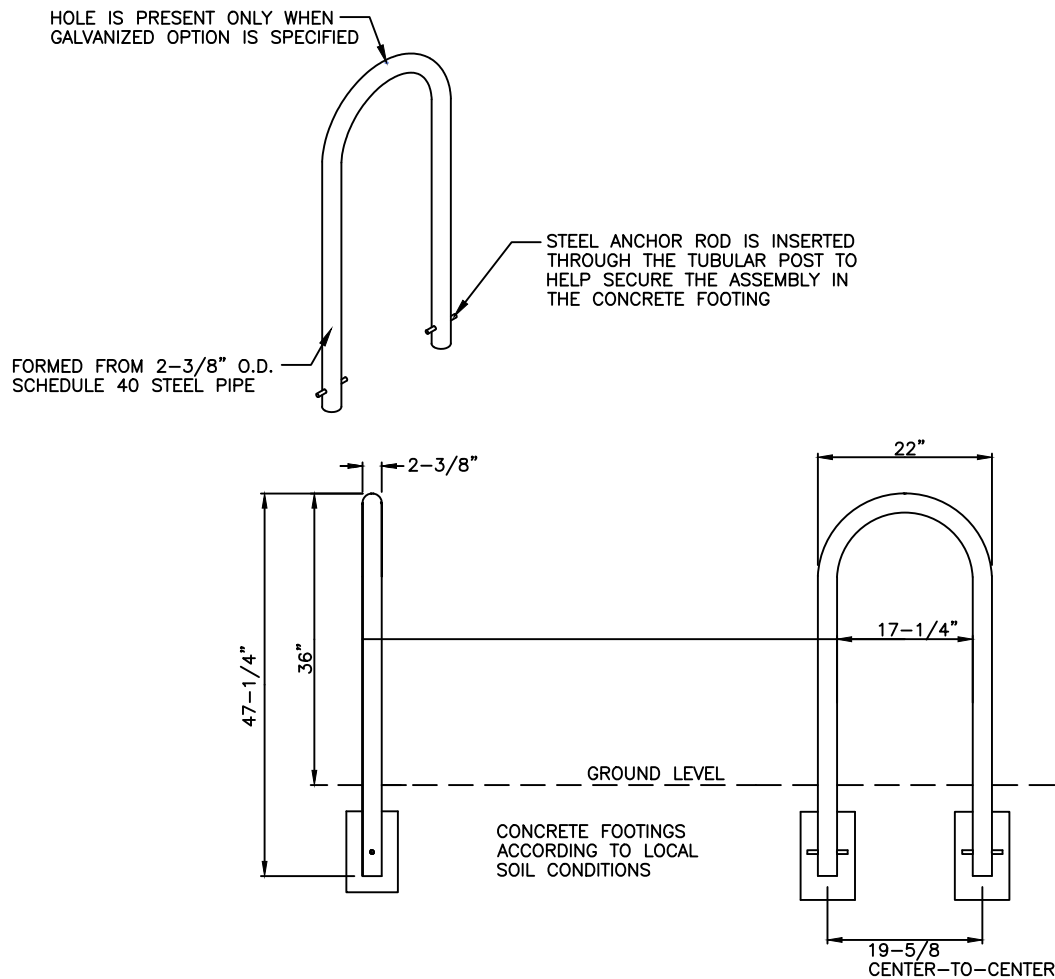
TOWN OF HOLLY SPRINGS ENGINEERING DEPARTMENT

STANDARD DETAIL NUMBER: HS005

DATE REVISIONS

09/17/20





NOTES:

1. ALL FABRICATED METAL COMPONENTS TO BE STEEL SHOTBLASTED, ETCHED, PHOSPHATIZED, PREHEATED, AND ELECTROSTATICALLY POWDER-COATED WITH T.G.I.C. POLYESTER POWDER COATINGS. PRODUCTS ARE FULLY CLEANED AND PREHEATED, PREHEATED AND COATED WHILE HOT TO FILL CREVICES AND BUILD COATING FILM. COATED PARTS ARE THEN FULLY CURED TO COATING MANUFACTURER'S SPECIFICATIONS. THE THICKNESS OF THE RESULTING FINISH AVERAGES 8-10 MILS (200-250 MICRONS).
2. THIS BIKE RACK MUST BE PERMANENTLY AFFIXED IN THE GROUND.
3. BIKE RACK MANUFACTURED BY SECURE SITE DESIGN OR SIMILAR.
4. MIN. 3 RACKS REQUIRED TO PROVIDE 6 BIKE SPACES.

DRAWING NOT TO SCALE

STANDARD IN-GROUND MOUNT BIKE RACK

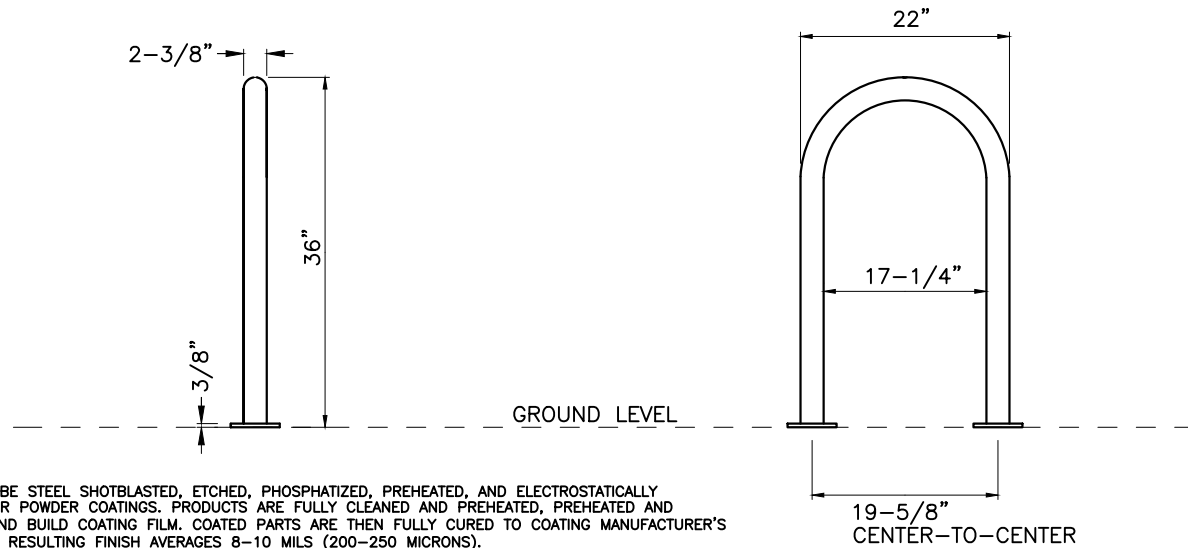
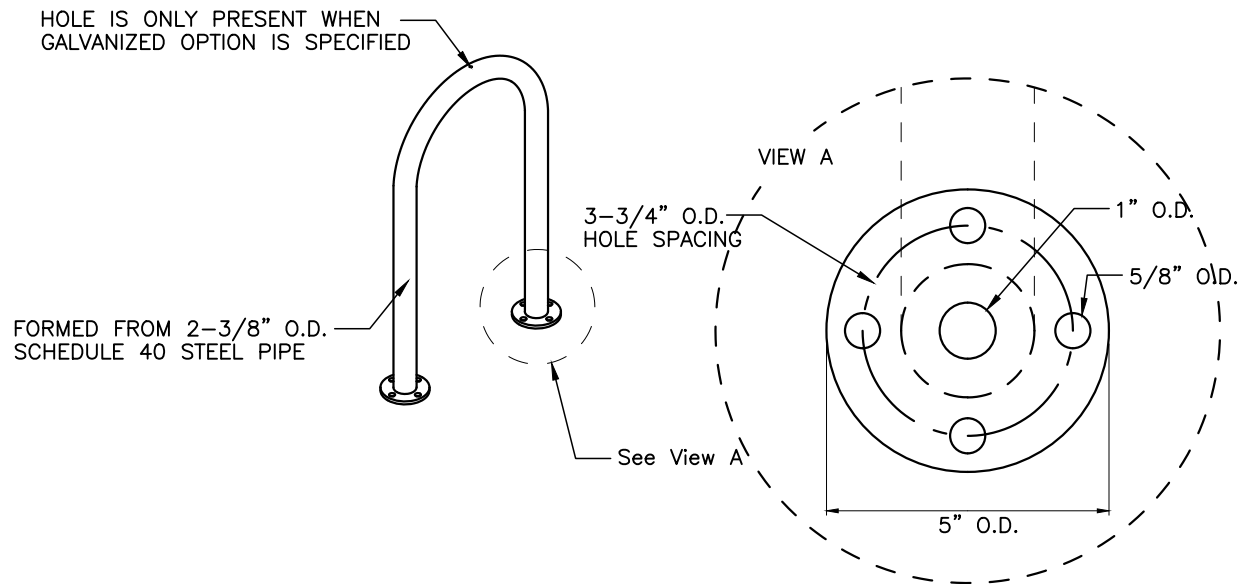
TOWN OF HOLLY SPRINGS ENGINEERING DEPARTMENT

STANDARD DETAIL NUMBER: HS007

DATE REVISIONS

8/27/18





NOTES:

1. ALL FABRICATED METAL COMPONENTS TO BE STEEL SHOTBLASTED, ETCHED, PHOSPHATIZED, PREHEATED, AND ELECTROSTATICALLY POWDER-COATED WITH T.G.I.C. POLYESTER POWDER COATINGS. PRODUCTS ARE FULLY CLEANED AND PREHEATED, PREHEATED AND COATED WHILE HOT TO FILL CREVICES AND BUILD COATING FILM. COATED PARTS ARE THEN FULLY CURED TO COATING MANUFACTURER'S SPECIFICATIONS. THE THICKNESS OF THE RESULTING FINISH AVERAGES 8-10 MILS (200-250 MICRONS).
2. THIS BIKE RACK MUST BE PERMANENTLY AFFIXED IN THE GROUND.
3. LOCATE ANCHOR BOLTS AFTER THE BIKE RACK IS IN PLACE.
4. BIKE RACK MANUFACTURED BY SECURE SITE DESIGN OR SIMILAR.

DRAWING NOT TO SCALE

**STANDARD SURFACE MOUNT BIKE RACK**

TOWN OF HOLLY SPRINGS ENGINEERING DEPARTMENT

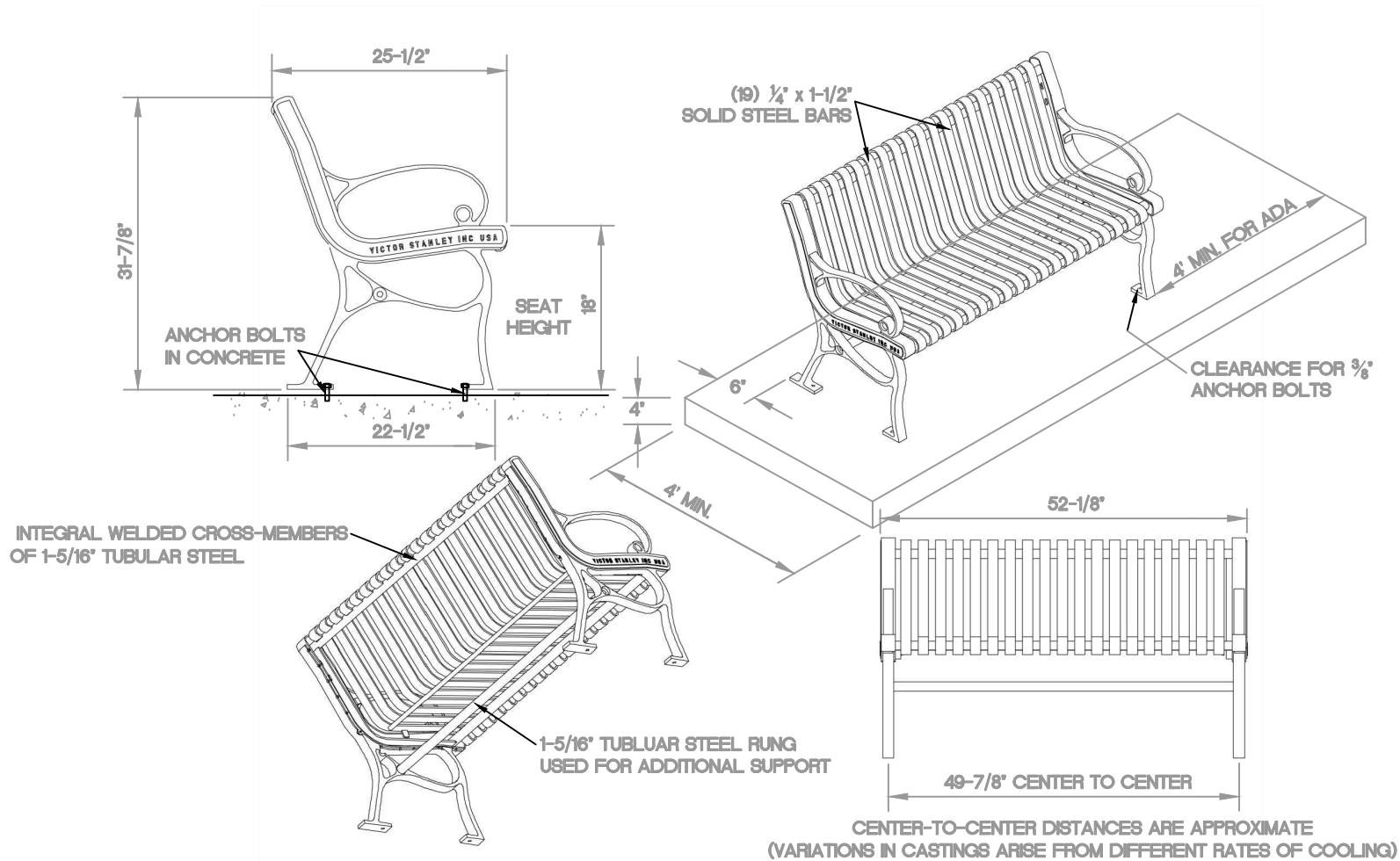
STANDARD DETAIL NUMBER: **HS008**

DATE

REVISIONS

6/18/19





NOTES:

1. MATERIAL SHALL BE DUCTILE CASTINGS WITH GALVANIZED STEEL COMPONENTS POWDER COATED FOR WEATHER PROTECTION.
2. LOCATED ACHOR BOLTS AFTER BENCH IS IN PLACE.
3. PERMANENTLY AFFIXED BENCH IN CONCRETE IN GROUND.
4. MANUFACTURER VICTOR STANLEY MODEL NO. CR-138, INC OR SIMILAR.

DRAWING NOT TO SCALE

# METAL BENCH - 4 ft

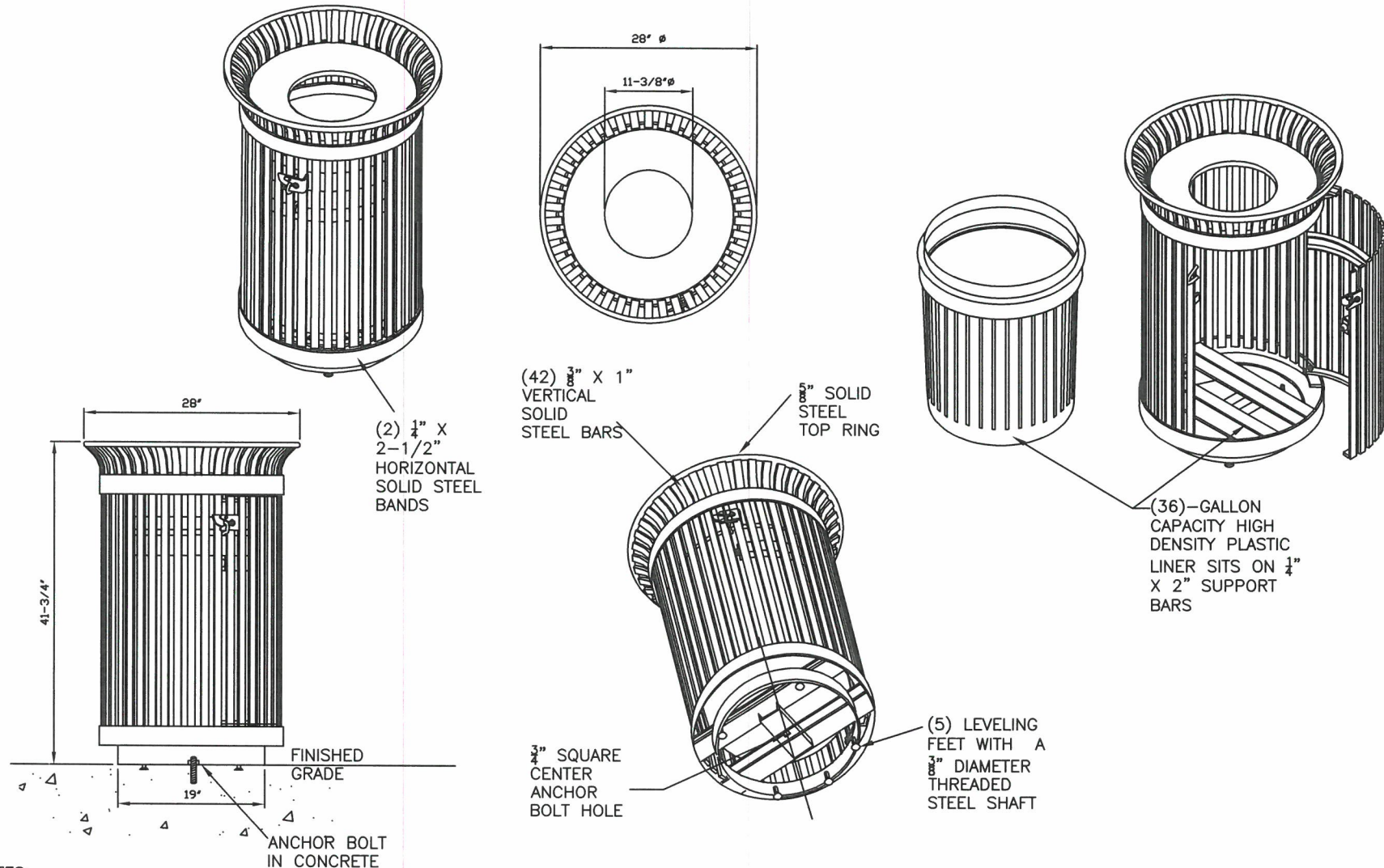
TOWN OF HOLLY SPRINGS

STANDARD DETAIL NUMBER: HS009

DATE REVISIONS

10/7/25





NOTES:

1. ALL STEEL COMPONENTS TO BE POWDER-COATED TO PREVENT RUST
2. TRASH ENCLOSURE TO BE PERMANENTLY AFFIXED TO THE GROUND WITH ANCHOR BOLTS
3. VICTOR STANLEY SD-42 IRONSITES SERIES 36 GALLON SIDE-DOOR-OPENING LITTER RECEPTACLE OR SIMILAR WITH DOME LID
4. TRASH CANS SHALL BE STANDARD BLACK AND RECYCLING CANS SHALL BE STANDARD BLUE WITH RECYCLE BAND DECAL

DRAWING NOT TO SCALE

# METAL TRASH AND RECYCLING CANS

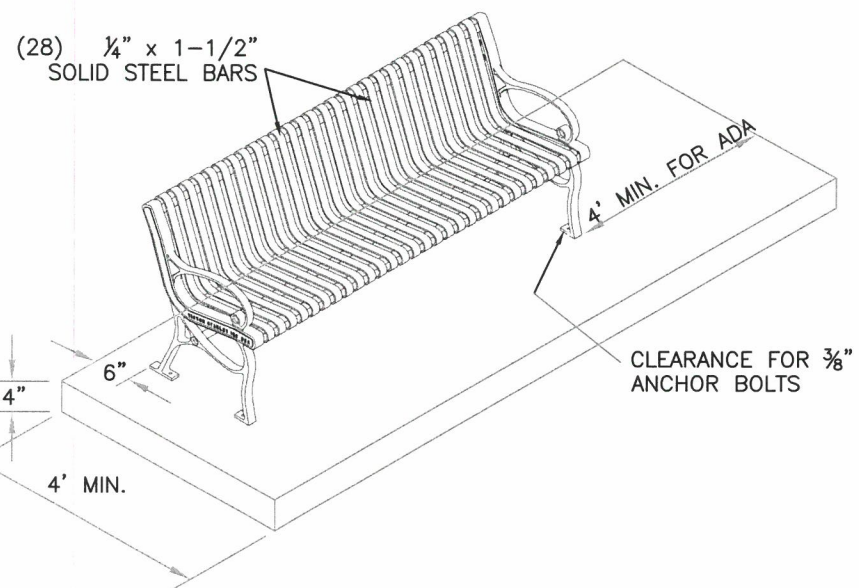
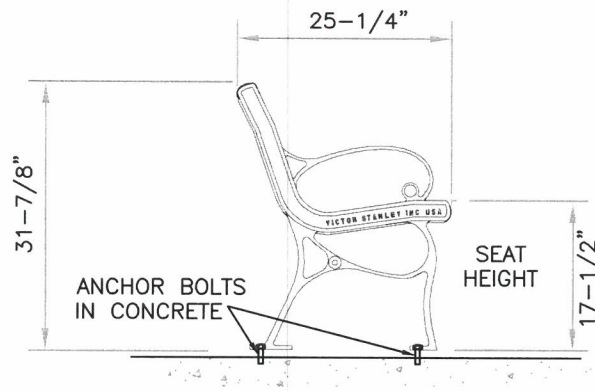
TOWN OF HOLLY SPRINGS ENGINEERING DEPARTMENT

STANDARD DETAIL NUMBER: HS010

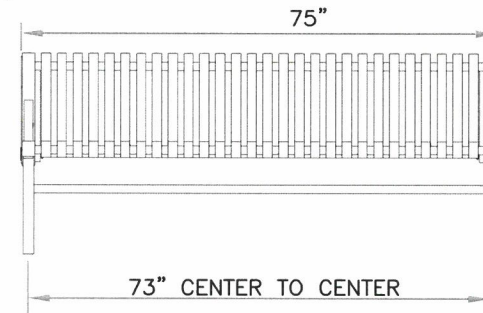
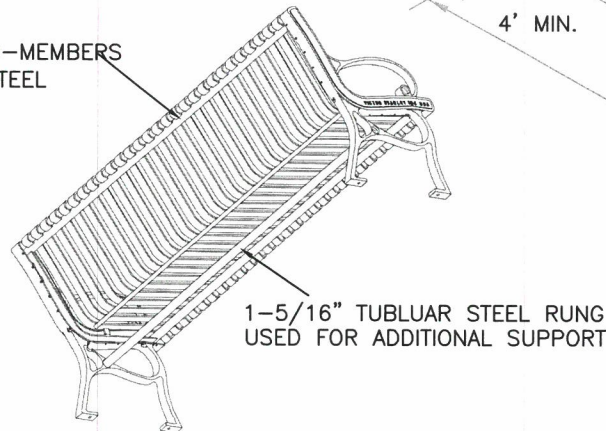
DATE REVISIONS

10/14/20





INTEGRAL WELDED CROSS-MEMBERS OF 1-5/16" TUBULAR STEEL



CENTER-TO-CENTER DISTANCES ARE APPROXIMATE  
(VARIATIONS IN CASTINGS ARISE FROM DIFFERENT RATES OF COOLING)

NOTES:

1. MATERIAL SHALL BE DUCTILE CASTINGS WITH GALVANIZED STEEL COMPONENTS POWDER COATED FOR WEATHER PROTECTION.
2. LOCATED ACHOR BOLTS AFTER BENCH IS IN PLACE.
3. PERMANENTLY AFFIXED BENCH TO THE GROUND.
4. MANUFACTURER VICTOR STANLEY MODEL NO. CR-138, INC OR SIMILAR WITH BLACK FINISH.

DRAWING NOT TO SCALE

## METAL BENCH - 6FT

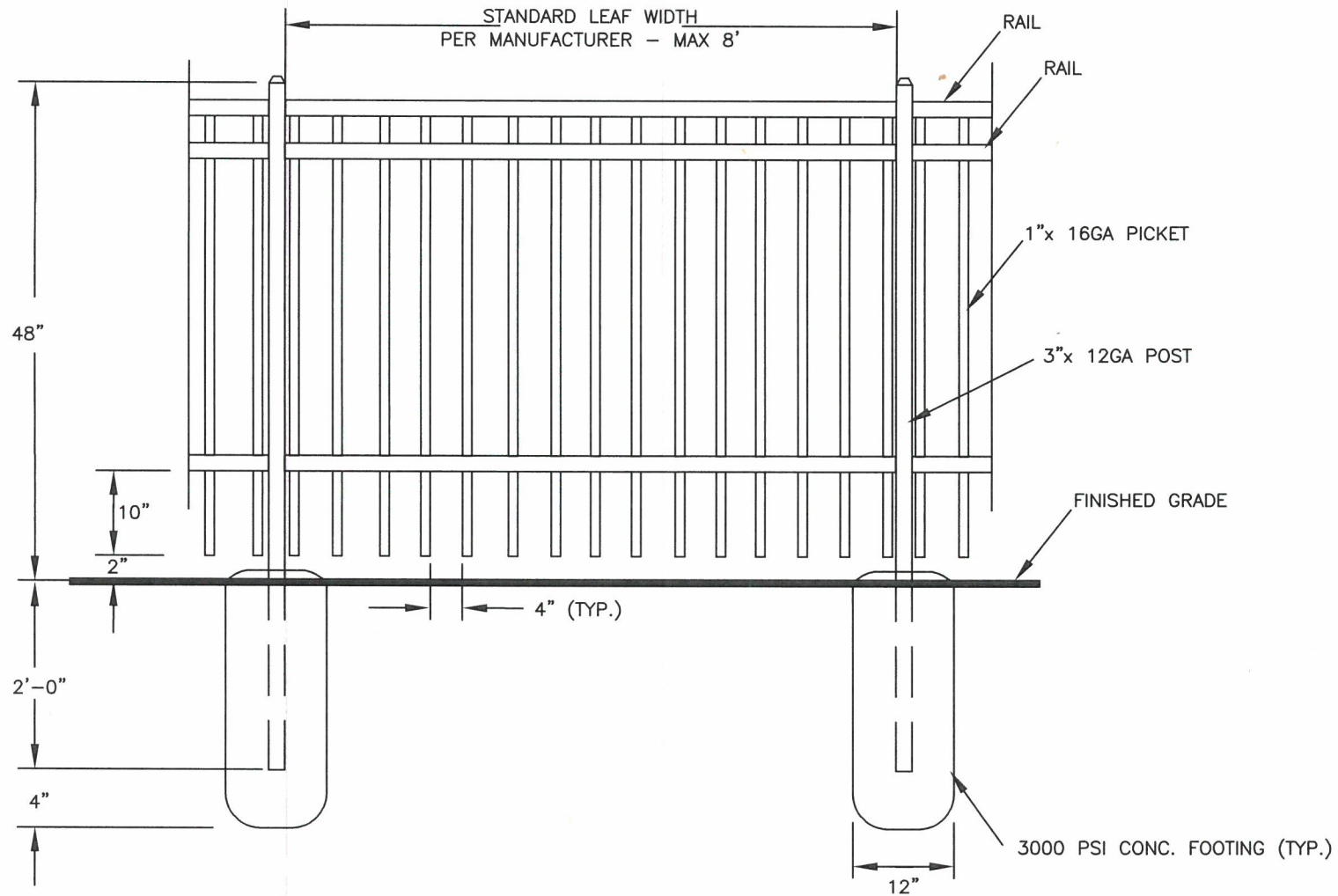
TOWN OF HOLLY SPRINGS ENGINEERING DEPARTMENT

STANDARD DETAIL NUMBER: HS011

DATE REVISIONS

10/14/20





NOTE:

1. Fence shall be aluminum powder coated with black paint.
2. Dimensions may vary. Max height is 48".

DRAWING NOT TO SCALE

DECORATIVE FENCE DETAIL

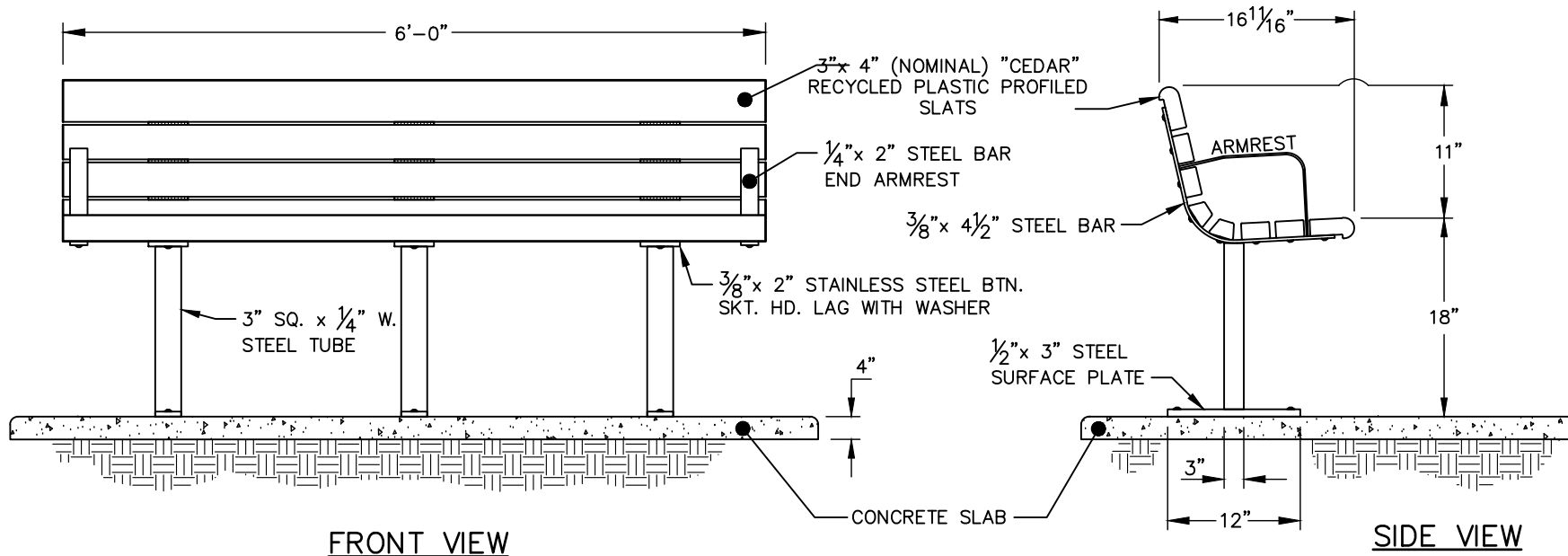
TOWN OF HOLLY SPRINGS ENGINEERING DEPARTMENT

STANDARD DETAIL NUMBER: HS012

DATE REVISIONS

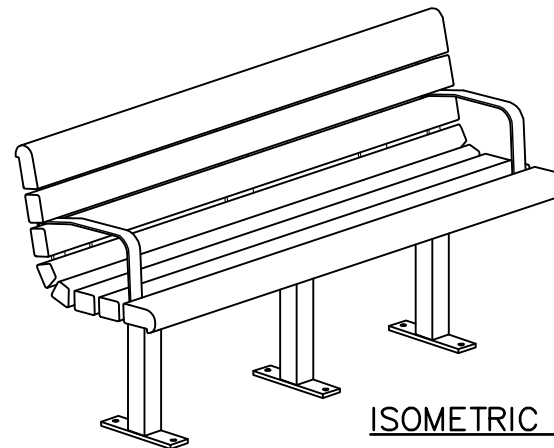
9/4/20





**NOTES:**

1. ALL STEEL MEMBERS COATED W/ ZINC RICH EPOXY THEN FINISHED WITH BLACK POLYESTER POWDER COATING.
2. DuMor PRODUCT OR EQUIVALENT.



**STANDARD BENCH**

DRAWING NOT TO SCALE

**GREENWAY BENCH**

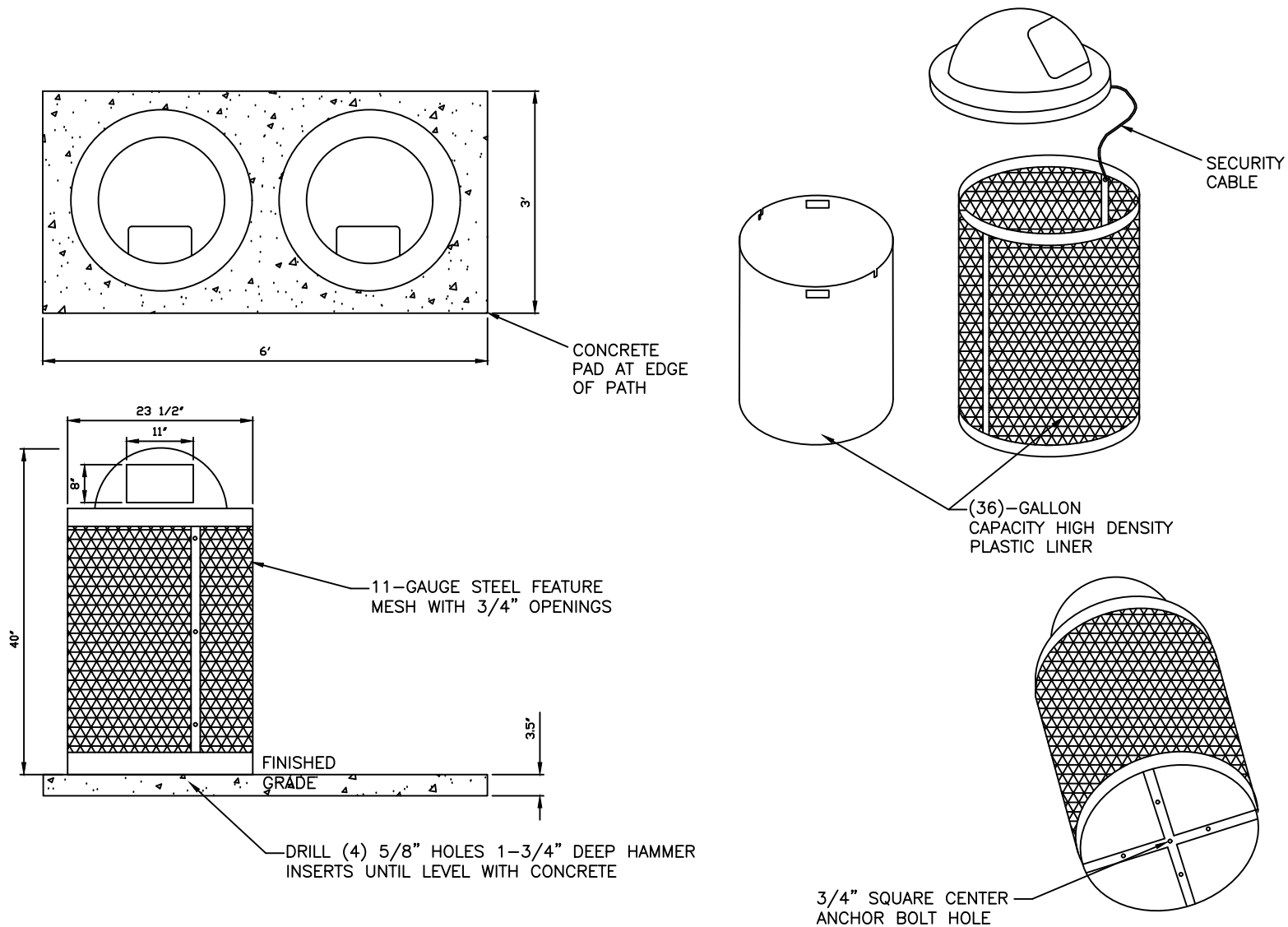
STANDARD DETAIL NUMBER: **HS013**

DATE REVISIONS

10/18/22

TOWN OF HOLLY SPRINGS ENGINEERING DEPARTMENT





DRAWING NOT TO SCALE

# GREENWAY TRASH AND RECYCLING CANS

TOWN OF HOLLY SPRINGS

STANDARD DETAIL NUMBER: HS014

DATE REVISIONS

10/7/25

