

NOTES:

1. D.I.P. SHALL BE USED FOR VALVE BOX EXTENSIONS.
2. VALVE OPERATING NUT MUST BE EXTENDED SO THAT THE DEPTH IS NO GREATER THAN 5' FROM THE SURFACE USING A MANUFACTURER APPROVED EXTENSION KIT.
3. PRECAST CONCRETE ENCASEMENT IS ALLOWED OUTSIDE OF PAVED AREAS.
4. DOMESTIC MADE IN USA.

DRAWING NOT TO SCALE

STANDARD VALVE BOX INSTALLATION

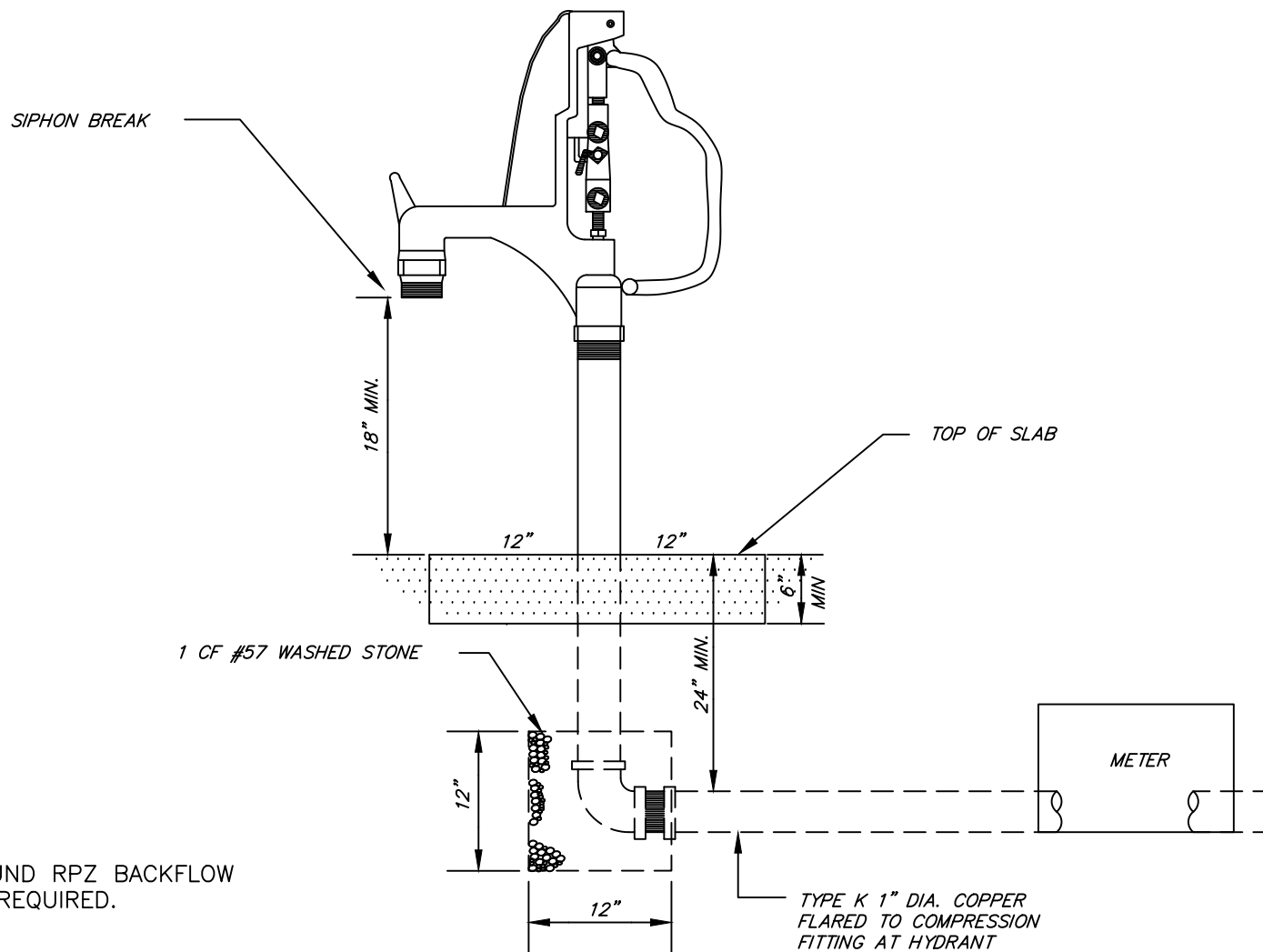
TOWN OF HOLLY SPRINGS

STANDARD DETAIL NUMBER: HS601

DATE REVISIONS

8/4/17
11/19/24





DRAWING NOT TO SCALE

YARD HYDRANT (NONFREEZE)

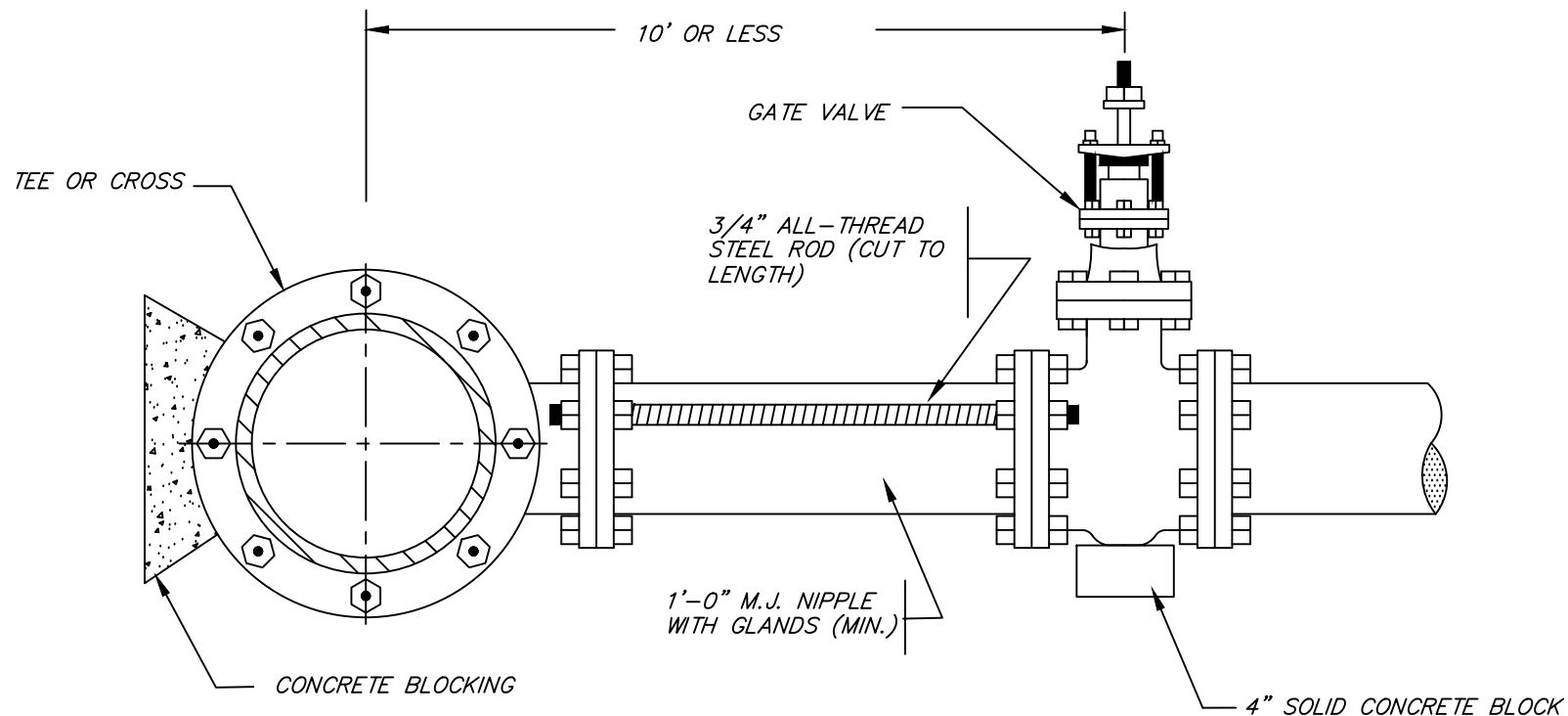
TOWN OF HOLLY SPRINGS ENGINEERING DEPARTMENT

STANDARD DETAIL NUMBER: HS602

DATE REVISIONS

8/30/19





ROD REQUIREMENTS

BRANCH SIZE	NO. OF RODS
4"	2
6"	2
8"	4
12"	4
16"	6
24"	6

NOTES:

1. ONCE INSTALLED AND TIGHT, THE STEEL RODS AND BOLTS SHALL BE COATED WITH 2 COATS OF BITUMINOUS BASE PAINT, STAINLESS STEEL AND GALVANIZED RODS CAN BE USED.
2. SEE STANDARD THRUST BLOCK.
3. CONCRETE SHALL NOT CONTACT BOLTS OR ENDS OF MECHANICAL FITTINGS.
4. CAN USE GALVANIZED RODS AND COAT RODS WHERE THEY ARE CUT.

DRAWING NOT TO SCALE

STANDARD VALVE RODDING

TOWN OF HOLLY SPRINGS ENGINEERING DEPARTMENT

STANDARD DETAIL NUMBER: HS603

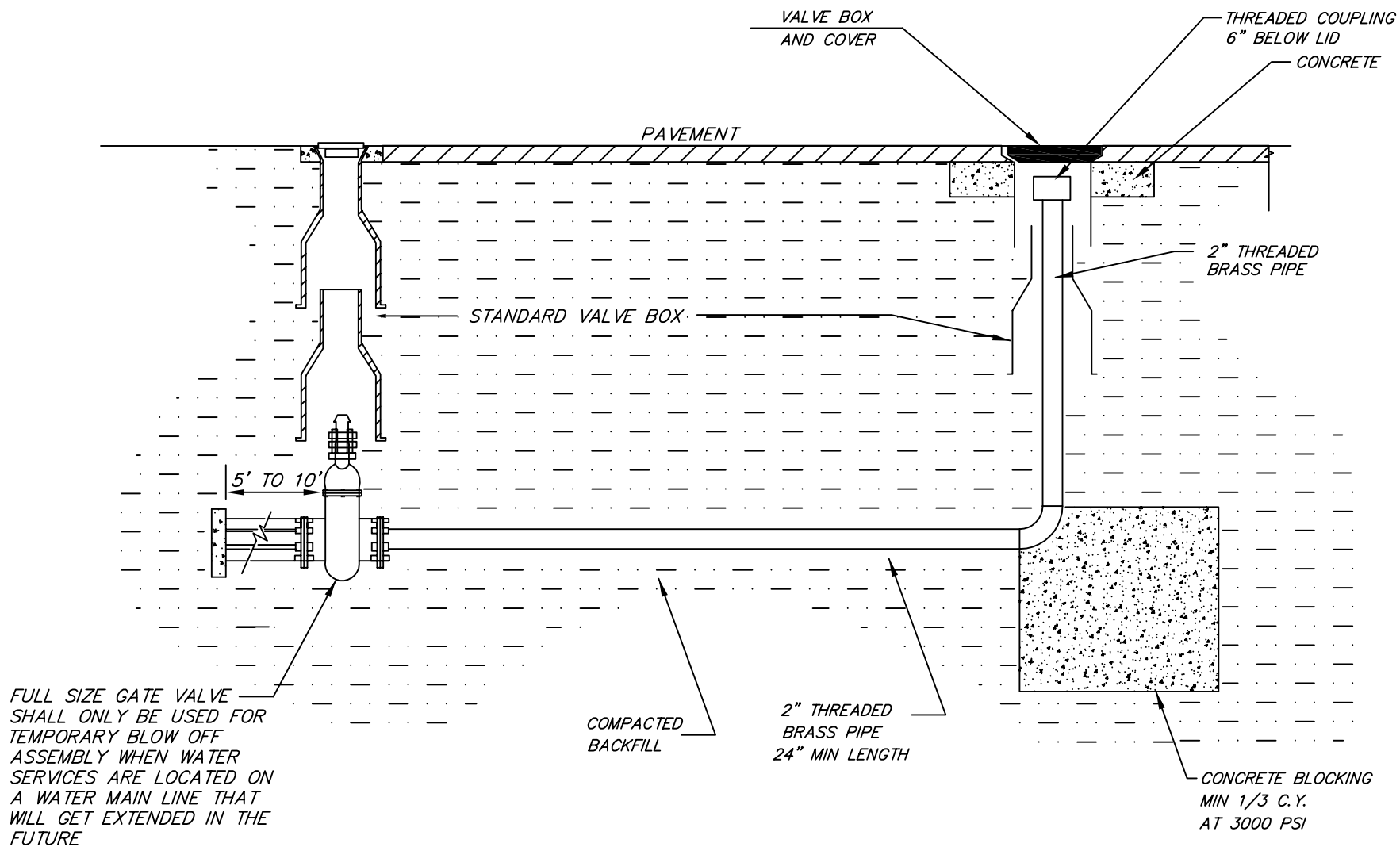
DATE REVISIONS

7/24/09





Holly Springs
Discover The Source.



DRAWING NOT TO SCALE

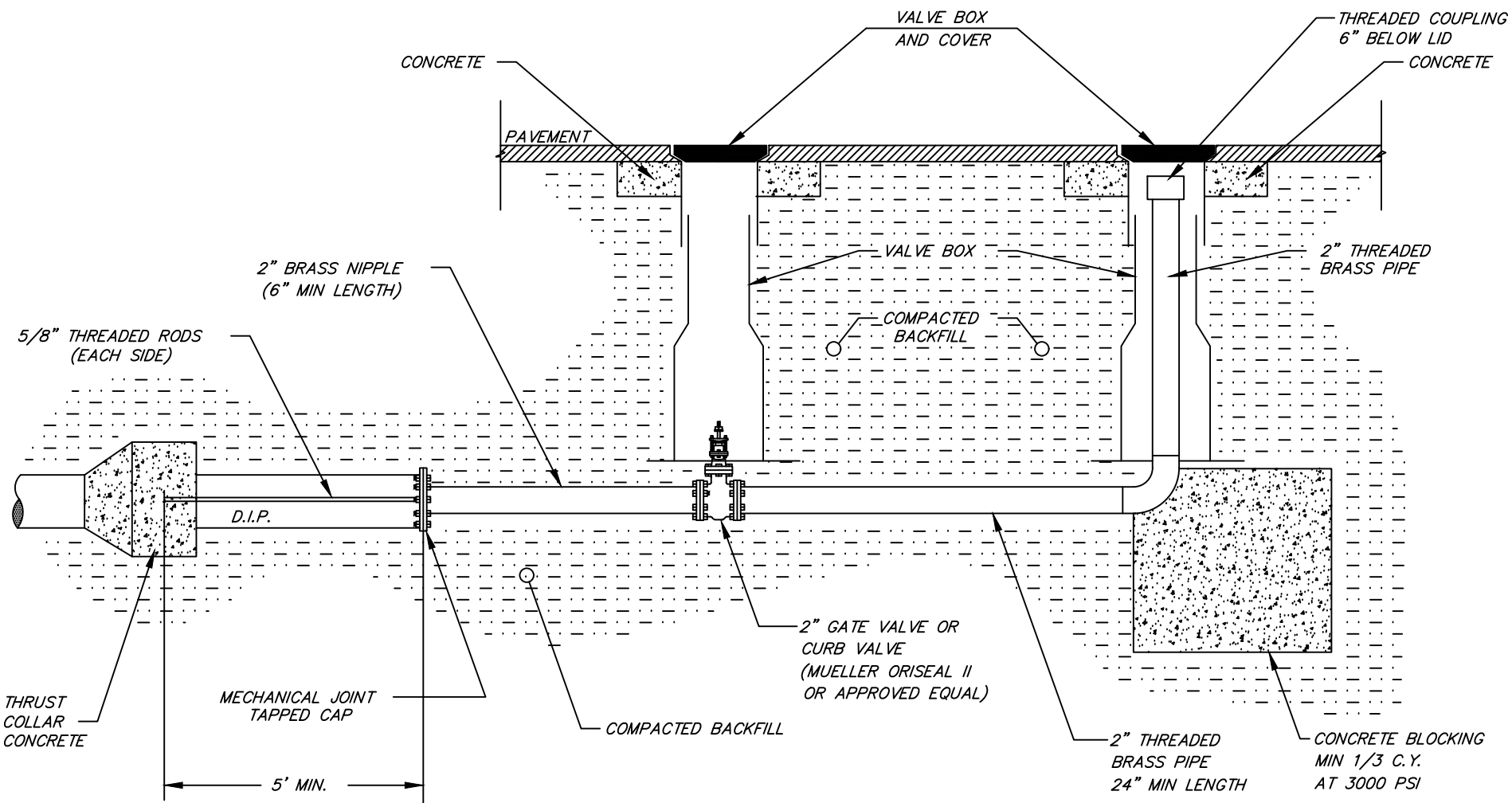
TEMPORARY BLOW-OFF ASSEMBLY

TOWN OF HOLLY SPRINGS ENGINEERING DEPARTMENT

STANDARD DETAIL NUMBER: **HS605**

DATE	REVISIONS
8/30/19	
6/27/23	FULL SIZE GATE VALVE RESTRICTION NOTE ADDED





NOTE: FOR TEMPORARY BLOW OFF ASSEMBLY USE FULL SIZE VALVE OR LINE SIZE WITH 2" BLOWOFF.

DRAWING NOT TO SCALE

STANDARD 2" BLOW-OFF ASSEMBLY

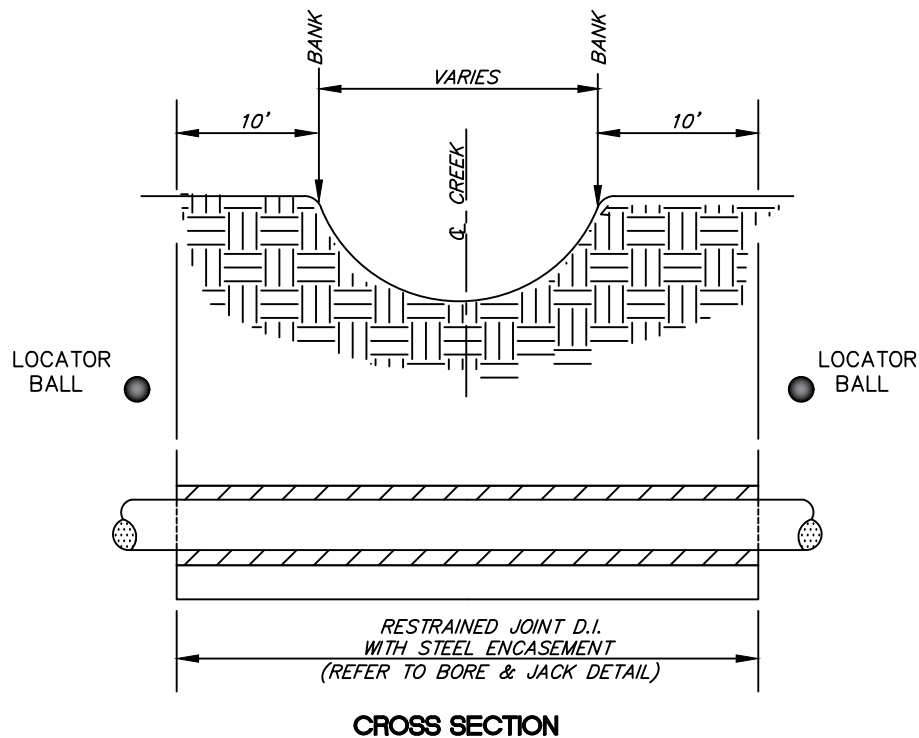
TOWN OF HOLLY SPRINGS ENGINEERING DEPARTMENT

STANDARD DETAIL NUMBER: HS606

DATE REVISIONS

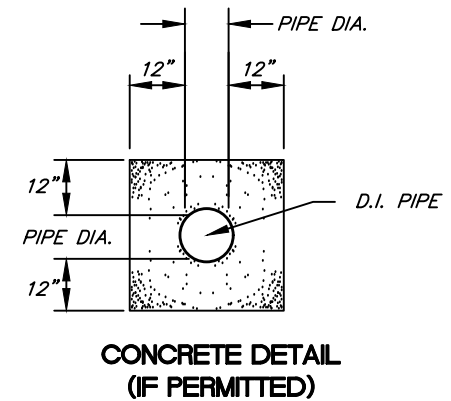
8/30/19





NOTES:

1. TOP OF CASING PIPE MUST BE AT LEAST 1' BELOW SOLID STREAM BOTTOM.
2. CONCRETE ENCASEMENT MAY BE PERMITTED IN CERTAIN CIRCUMSTANCES. SEE CONCRETE DETAIL.
3. INSTALL LOCATOR BALLS AT EACH END OF CASING.



DRAWING NOT TO SCALE

STANDARD STEEL ENCASEMENT FOR STREAM CROSSING

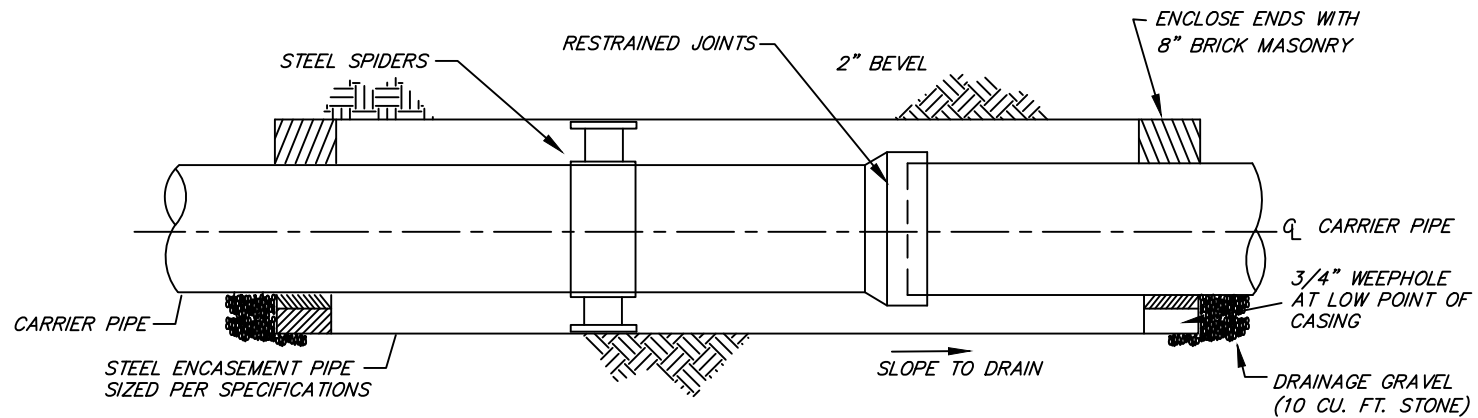
TOWN OF HOLLY SPRINGS ENGINEERING DEPARTMENT

STANDARD DETAIL NUMBER: HS607

DATE REVISIONS

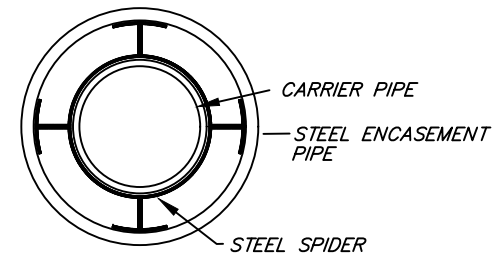
1/15/19





NOTES:

1. DUCTILE IRON PIPE SHOULD HAVE 2 SPIDERS PER STITCH OF PIPE.
2. PVC SHOULD HAVE 3 SPIDERS PER STITCH OF PIPE.
3. RESTRAINT — GASKET REQUIRED FOR PUSH ON JOINT PIPE.
(NO WELDED RINGS ALLOWED TO BE USED FOR RESTRAINT)



SPIDER DETAIL

DRAWING NOT TO SCALE

WATER BORE + JACK DETAIL

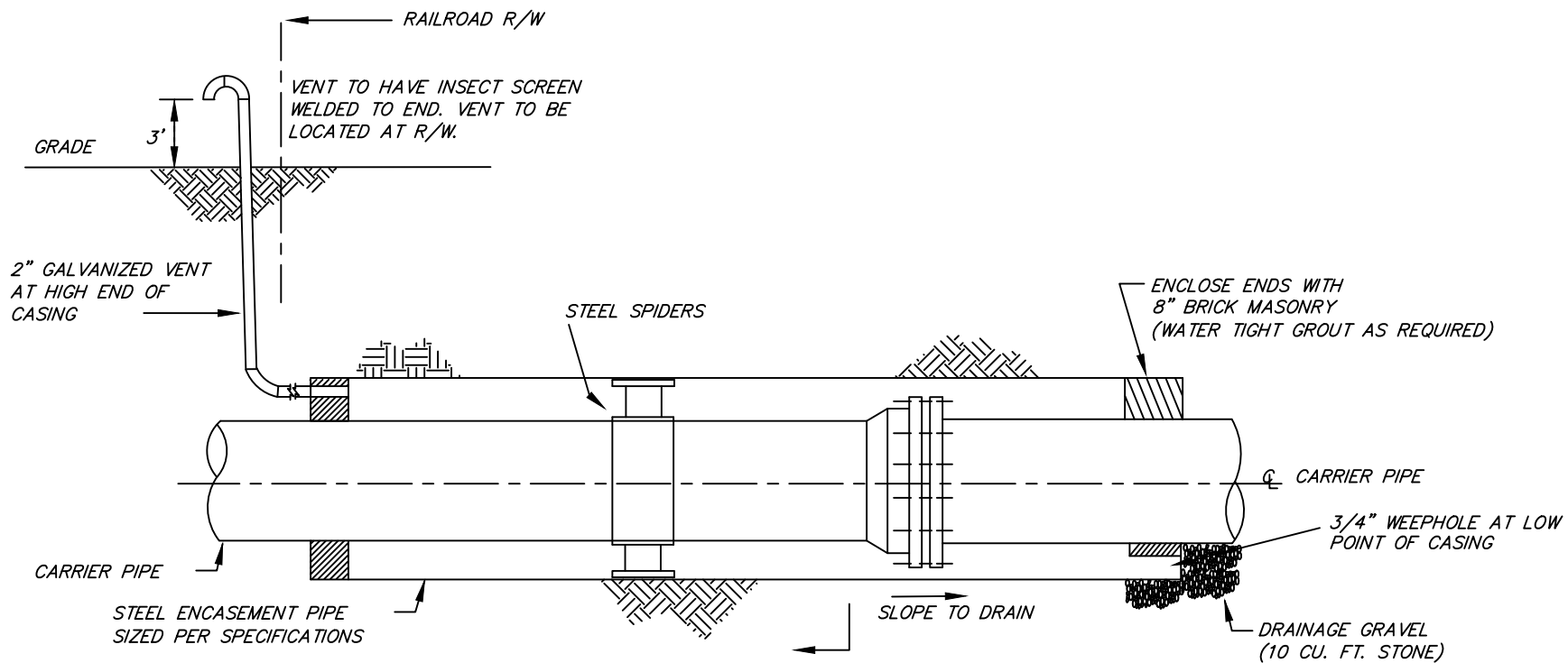
TOWN OF HOLLY SPRINGS ENGINEERING DEPARTMENT

STANDARD DETAIL NUMBER: **HS608**

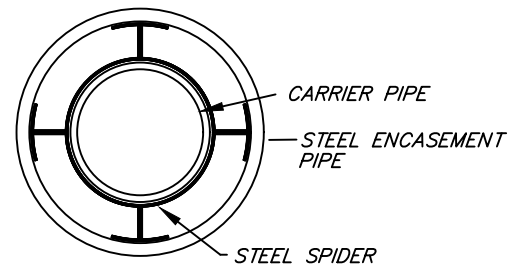
DATE REVISIONS

7/24/18





ELEVATION



SPIDER DETAIL

DRAWING NOT TO SCALE

CARRIER PIPE - UNDER RAILROAD

TOWN OF HOLLY SPRINGS ENGINEERING DEPARTMENT

STANDARD DETAIL NUMBER: HS609

DATE
8/30/19

REVISIONS



STANDARD M.H. RING AND COVER
LABELED APPROPRIATELY

STEPS AT 16" ON CENTER
(ONLY INSTALLED WHEN
DEPTH EXCEEDS 3')

FINISHED GRADE
(VARIES)

4' PRECAST
CONC. MANHOLE

2" BRASS AIR/VACUUM VALVE

$\frac{1}{4}$ " THK. X $1\frac{1}{2}$ " WIDE BRASS FLAT
BAR (LENGTH AS DETERMINED BY VALVE BODY DIAMETER)

$\phi \frac{3}{8}$ " X 4" X 0'-8" LG. W/ 2-
 $\frac{5}{8}$ " HOLES (2 REQ'D)

$\frac{1}{2}$ " CONC. EXP.
ANCHORS (2 EA. PLATE)

BRASS $L2 \times 2 \times \frac{1}{4}$ (LENGTH
DEPENDENT ON MANHOLE DIAMETER &
SIZE OF VALVE) W/ $\frac{5}{8}$ " X 1" LG. SLOTTED
HOLE

2" THD. BRASS BALL VALVE

2" BRASS NIPPLE (TYP.)

DIP MAIN (WATER) OR C900 PVC
(RECLAIMED)

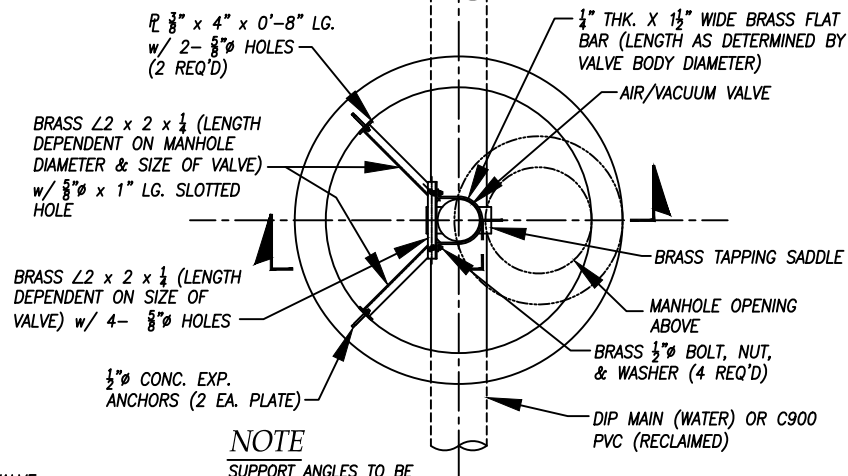
BRASS TAPPING SADDLE

12" No. 57 STONE

TYPICAL CONCRETE FOOTING
(3000 P.S.I. CONCRETE)

2" FLOOR
DRAIN

TYPICAL SECTION



PLAN

NOTES:

1. TAP SIZE AND ISOLATION VALVE TO BE SAME SIZE AS AIR VALVE.
2. ALL PIPING AND FITTINGS, IN THE MANHOLE, SHALL BE BRASS OR BRONZE UNLESS NOTED.
3. MANHOLE STEPS SHALL BE PLACED 16" O.C.
4. CONCENTRIC CONES MAY BE USED FOR AIR VALVE MANHOLES LESS THAN 5' IN DEPTH.

PROVIDE FLEXIBLE BOOT AND
BRASS BAND.

DRAWING NOT TO SCALE

COMBINATION AIR VALVE MANHOLE FOR RECLAIM AND WATER MAINS

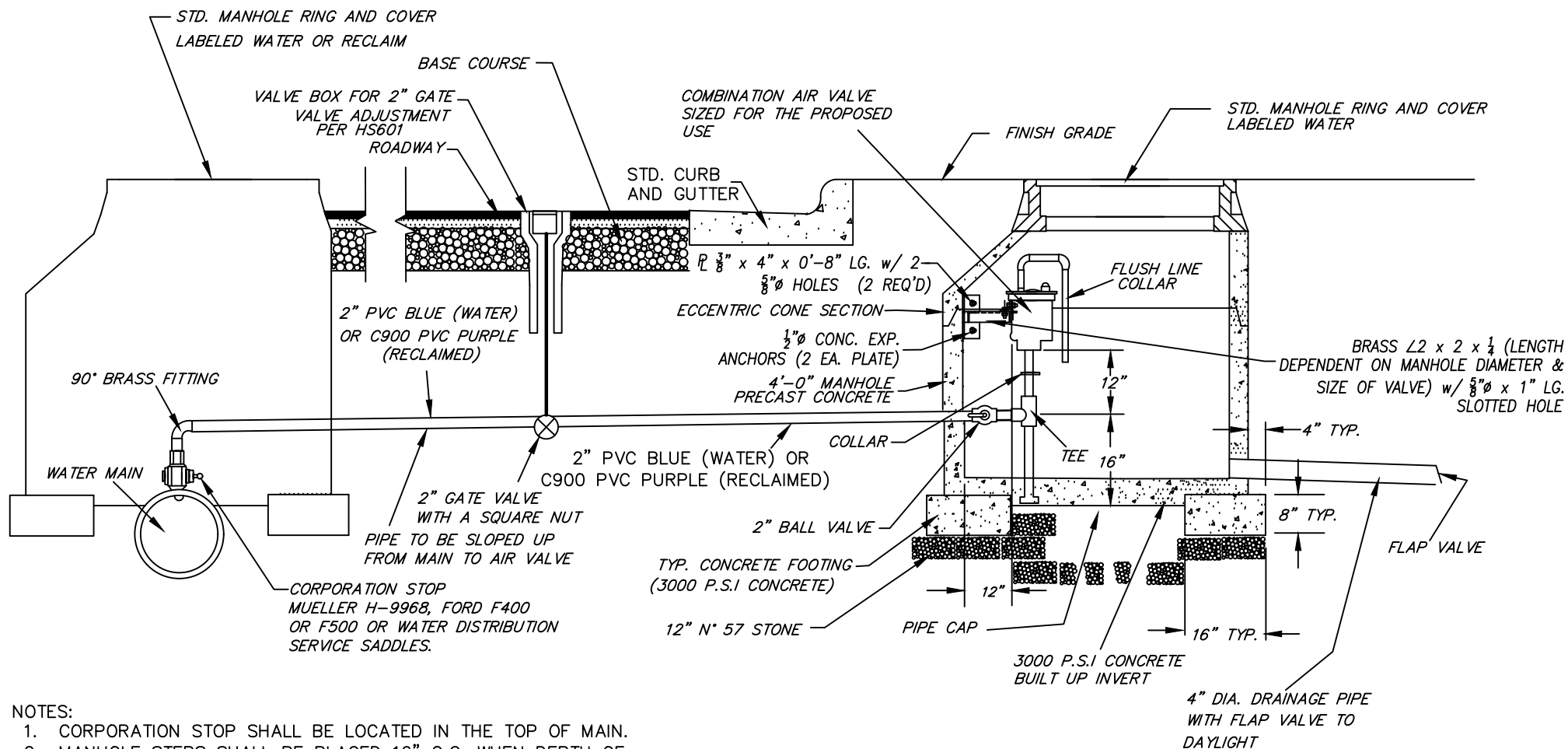
TOWN OF HOLLY SPRINGS ENGINEERING DEPARTMENT

STANDARD DETAIL NUMBER: HS1101 & HS610

DATE REVISIONS

1/4/22





NOTES:

1. CORPORATION STOP SHALL BE LOCATED IN THE TOP OF MAIN.
2. MANHOLE STEPS SHALL BE PLACED 16" O.C. WHEN DEPTH OF MANHOLE EXCEEDS 5 FEET.

NOTE: IF DRAIN PIPE TO DAYLIGHT IS NOT ACHIEVABLE THEN
MUST RECEIVE APPROVAL FROM DIRECTOR OF UTILITIES AND
INFRASTRUCTURE FOR AN ACCEPTABLE STANDARD AIR RELEASE.

DRAWING NOT TO SCALE

**STANDARD COMBINATION AIR VALVE MANHOLE OFFSET FROM MAIN
FOR RECLAIMED WATER OR WATER MAINS**

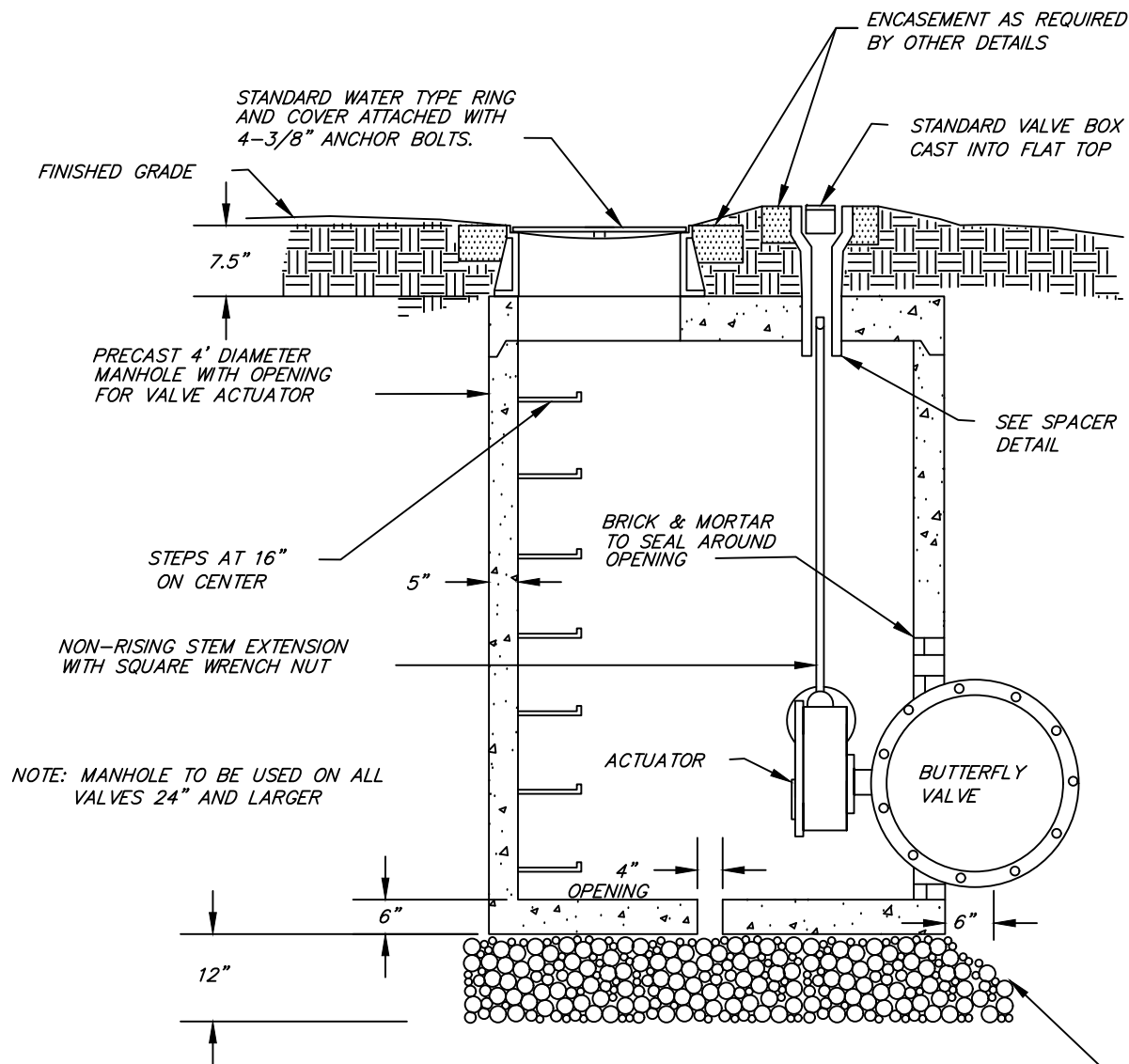
TOWN OF HOLLY SPRINGS ENGINEERING DEPARTMENT

STANDARD DETAIL NUMBER: HS611 HS1102

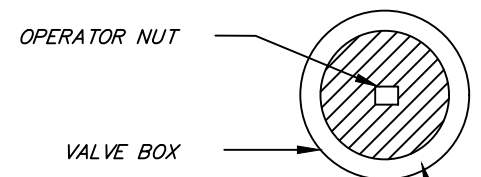
DATE REVISIONS

1/4/22



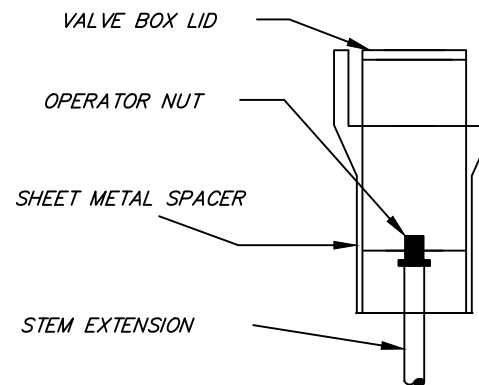


**SPACER DETAIL
TOP VIEW**



SHEET METAL SPACER WITH A DIAMETER SLIGHTLY SMALLER THAN THE INSIDE DIAMETER OF THE VALVE BOX AND A SQUARE HOLE CENTERED TO BE PLACED OVER THE VALVE OPERATOR NUT.

SIDE VIEW



NO. 57 STONE

NOTES:

1. THIS DETAIL SHALL BE CUSTOMIZED ON A PROJECT BY PROJECT BASIS.
2. PIPE, ACTUATOR AND BUTTERFLY VALVE SHALL BE INSTALLED INSIDE MANHOLE.

DRAWING NOT TO SCALE

BUTTERFLY VALVE WITH MANHOLE AROUND ACTUATOR

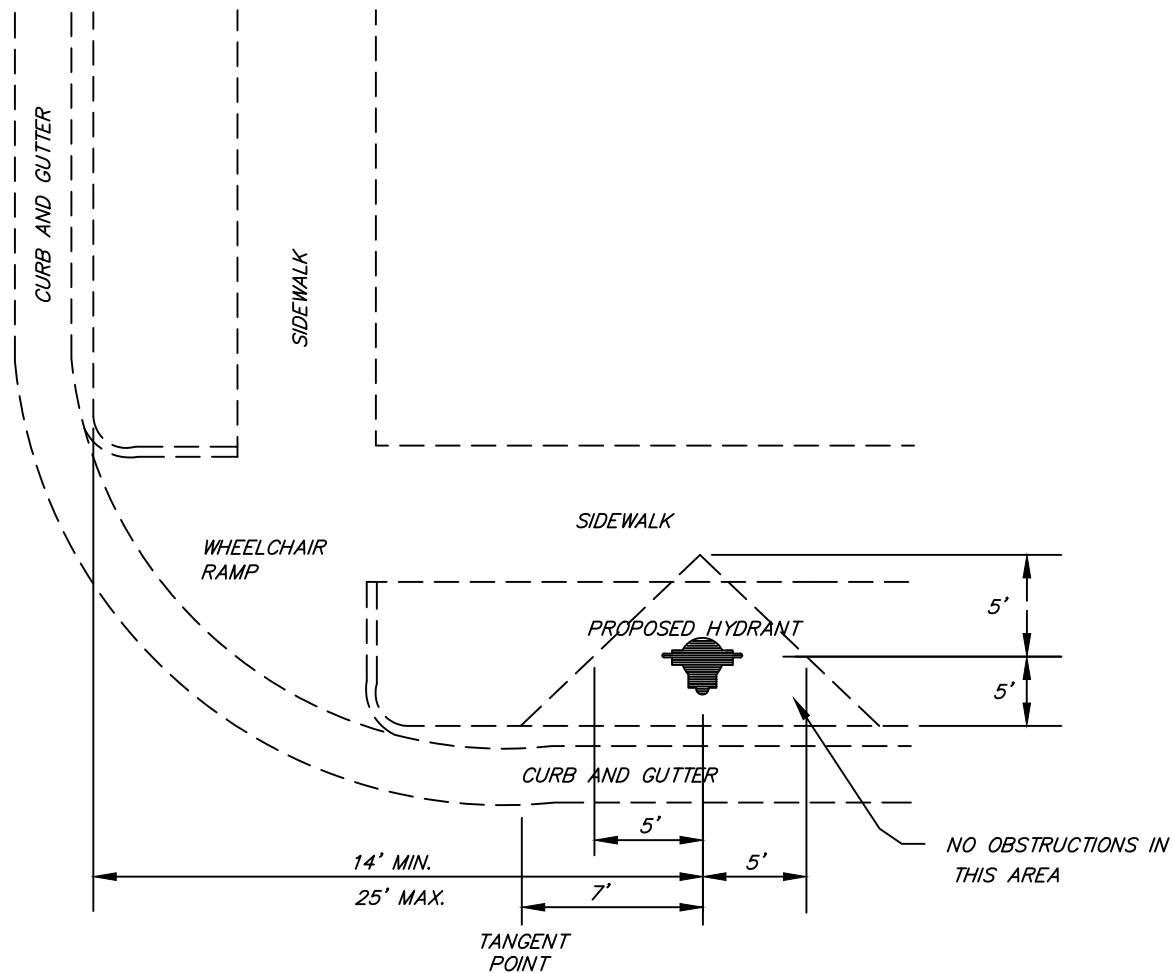
TOWN OF HOLLY SPRINGS ENGINEERING DEPARTMENT

STANDARD DETAIL NUMBER: **HS612**

DATE REVISIONS

7/24/09





NOTES:

1. LOCATION SHOULD BE COORDINATED WITH NCDOT ALONG STATE MAINTAINED ROADWAYS.
2. HYDRANTS NOT TO BE LOCATED IN RADIUS.

DRAWING NOT TO SCALE

STANDARD HYDRANT LOCATION

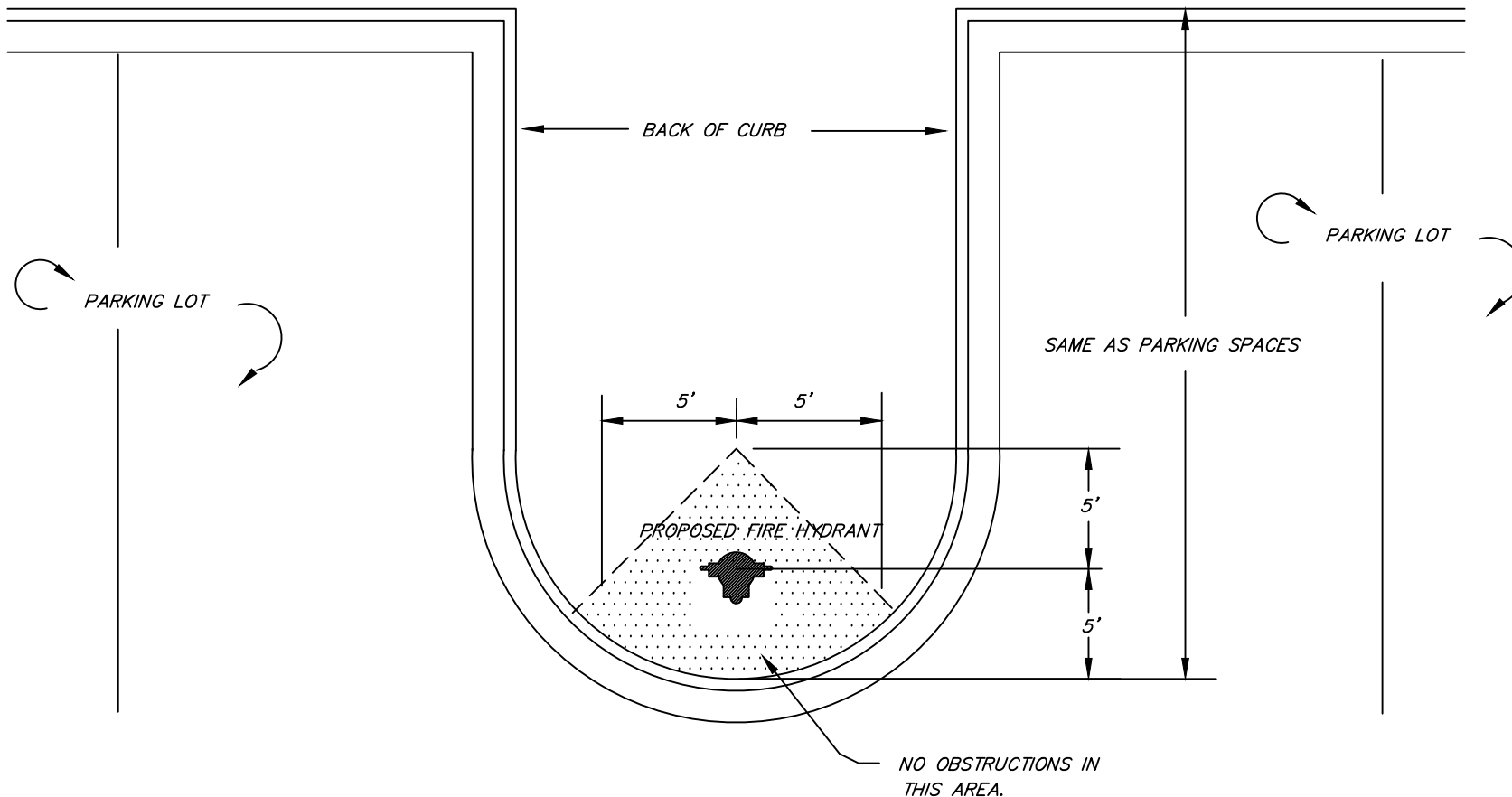
TOWN OF HOLLY SPRINGS ENGINEERING DEPARTMENT

STANDARD DETAIL NUMBER: **HS613**

DATE
11/9/21

REVISIONS





DRAWING NOT TO SCALE

STANDARD HYDRANT LOCATION (FOR PARKING LOT)

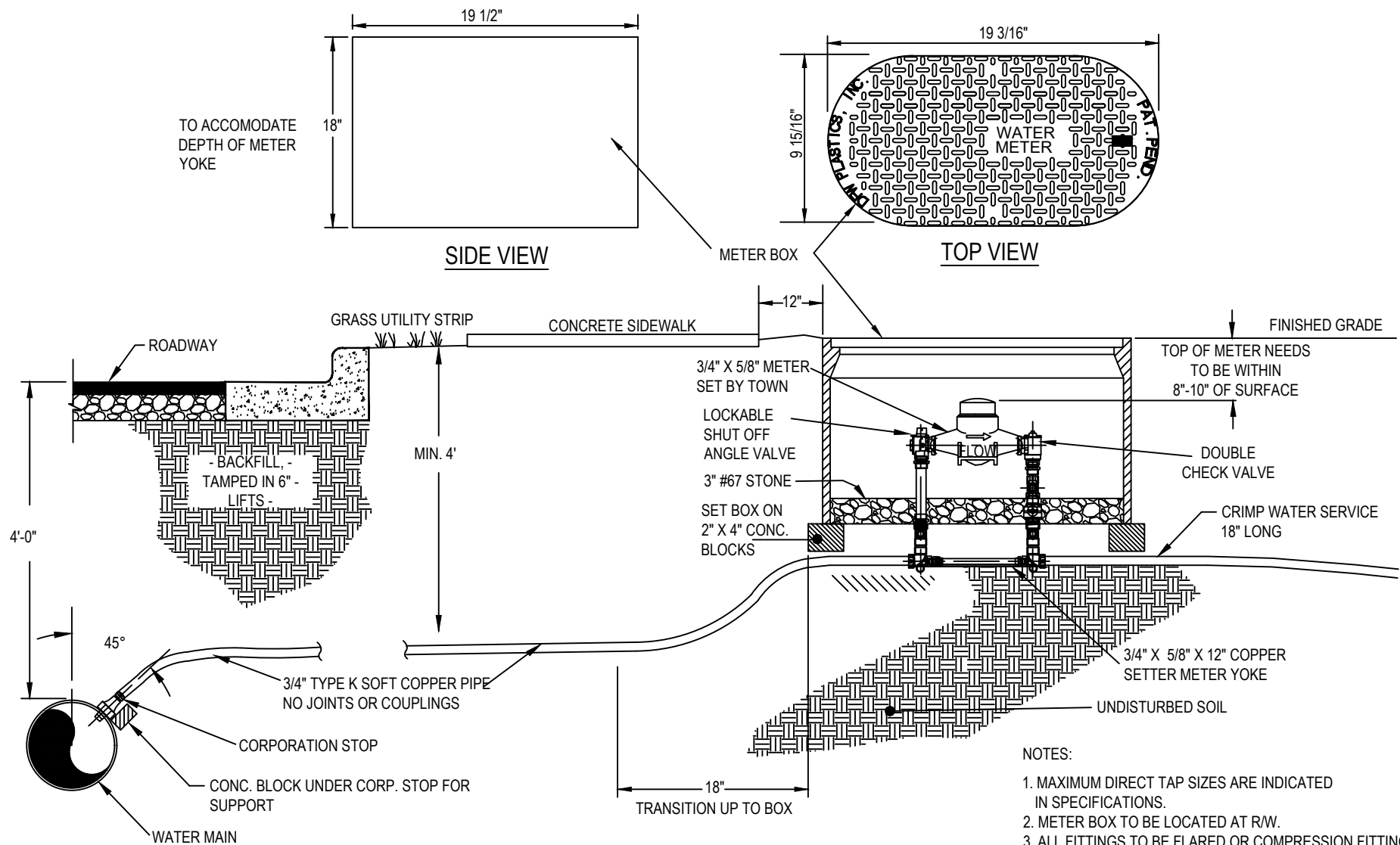
TOWN OF HOLLY SPRINGS ENGINEERING DEPARTMENT

STANDARD DETAIL NUMBER: **HS614**

DATE REVISIONS

11/9/21





NOTES:

1. MAXIMUM DIRECT TAP SIZES ARE INDICATED IN SPECIFICATIONS.
2. METER BOX TO BE LOCATED AT R/W.
3. ALL FITTINGS TO BE FLARED OR COMPRESSION FITTINGS. FLARED FITTINGS PREFERRED.
4. ALL 3/4" X 5/8" WATER METERS TO BE SUPPLIED BY TOWN.
5. METER TO READ IN 100's OF GALLONS.

NOTE:
CARRY WASHED STONE UNDER AND
AROUND PIPE TO PROTECT CORPORATION
STOP.

DRAWING NOT TO SCALE

STANDARD 3/4" WATER SERVICE

TOWN OF HOLLY SPRINGS

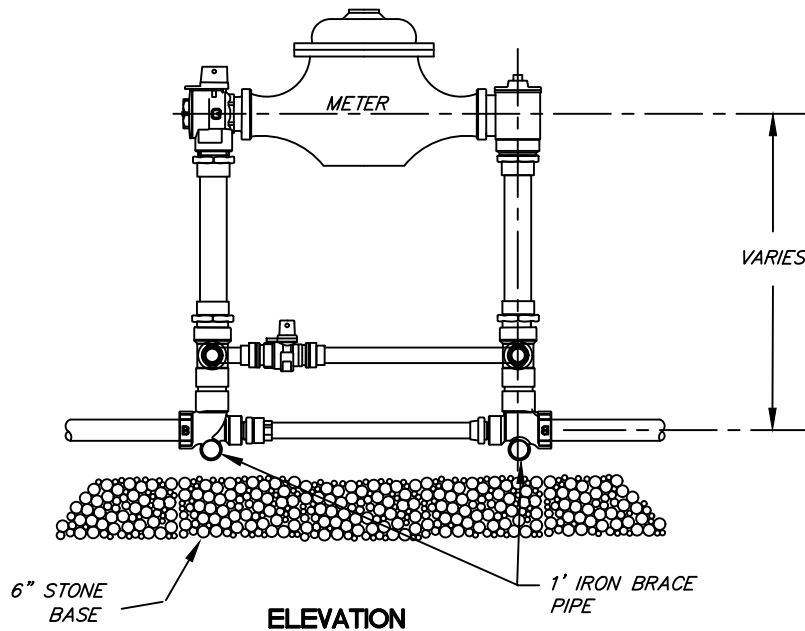
STANDARD DETAIL NUMBER: HS615

DATE	REVISIONS
11/2/20	
6/11/24	



NOTES:

TO ENSURE POSITIVE DRAINAGE, THE VAULT SHOULD BE TIED INTO THE EXISTING STORM DRAINAGE SYSTEM WHEN POSSIBLE.

**NOTES:**

1. PIPING TO BE BRASS & COPPER TUBING & SHALL BE EQUIPPED W/ANGLED CHECK VALVE OUTLETS & BY-PASS FLANGED VALVE OR BY-PASS FLANGED BALL VALVE INLETS AS FURNISHED BY FORD CUSTOMSETTERS, MUELLER OR OTHER APPROVED EQUAL.

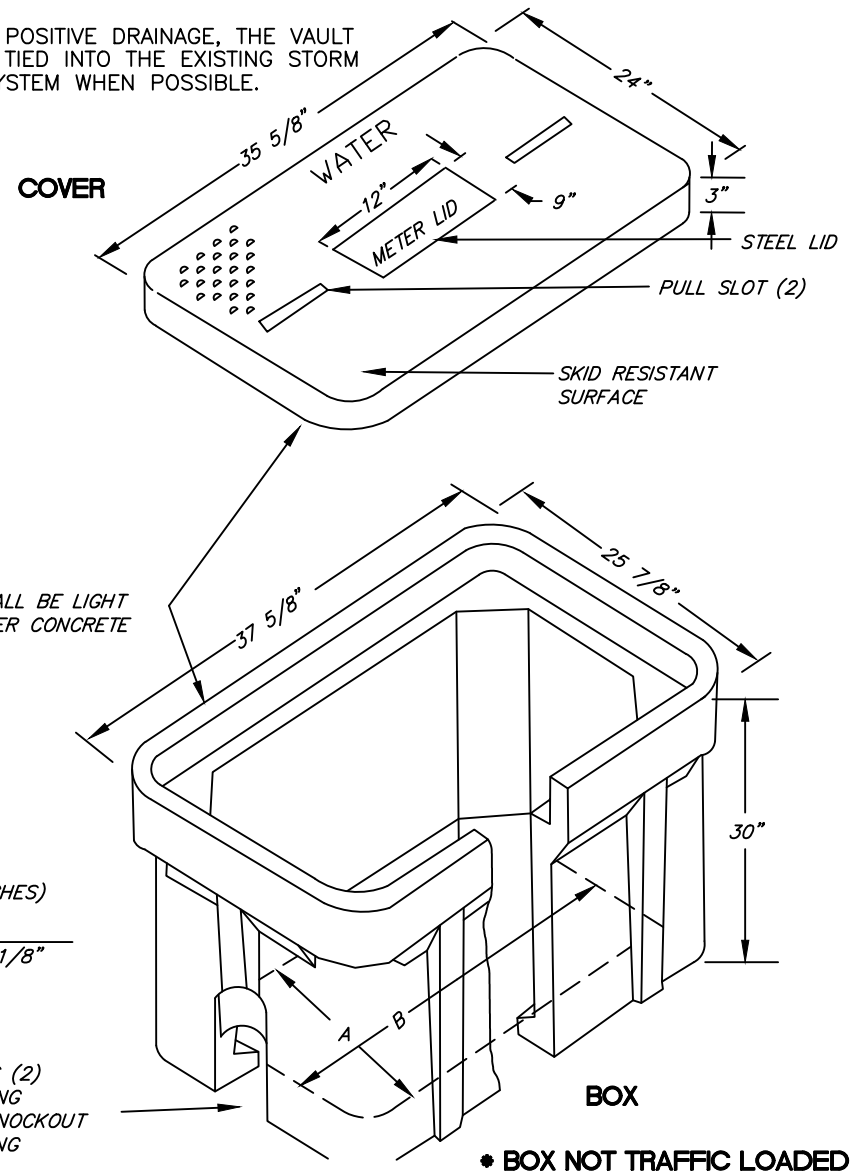
2. PRECAST CONCRETE BOX WITH ALUMINUM ACCESS HATCH WILL BE AN ACCEPTABLE ALTERNATIVE WITH APPROVAL OF THE DIRECTOR OF ENGINEERING.

MATERIAL SHALL BE LIGHT WEIGHT POLYMER CONCRETE

DIMENSIONS (INCHES)

A	B
18 3/8"	30 1/8"

MOUSE HOLES (2)
4"x 4" OPENING
WITH 4"x4" KNOCKOUT
ABOVE OPENING



DRAWING NOT TO SCALE

STANDARD 1-1/2' METER INSTALLATION AND VAULT

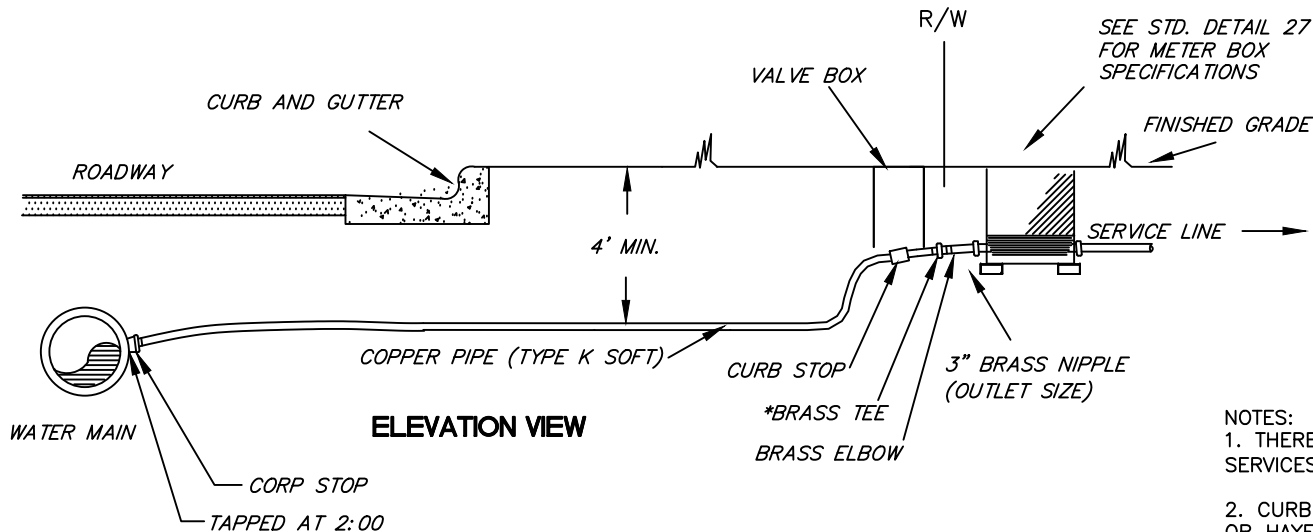
STANDARD DETAIL NUMBER: **HS616**

DATE REVISIONS

2/22/19

TOWN OF HOLLY SPRINGS ENGINEERING DEPARTMENT





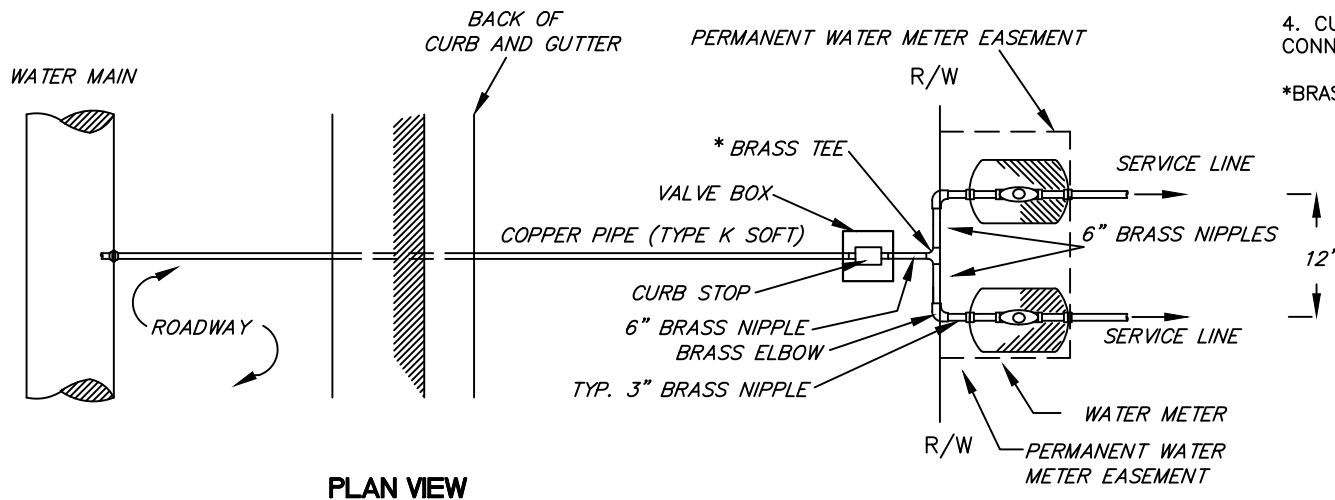
APPROVED MULTIPLE CONNECTIONS

SIZE SERVICE INCHES	SIZE INLET INCHES	NUMBER OF BRANCHES
3/4	3/4	2
3/4	1	3
3/4	1	4
3/4	1 1/2	5-10

NOTES:

1. THERE SHALL BE NO MULTIPLE CONNECTIONS FOR SERVICES OTHER THAN 3/4" (INCHES).
2. CURB STOPS SHALL BE AS MANUFACTURED BY FORD OR HAYES.
3. METER BOXES SHALL BE AS DESCRIBED IN THE STANDARD SPECIFICATIONS UNDER WATER DISTRIBUTION; HOWEVER, THE INLET SHALL BE IRON PIPE THREADED INLETS.
4. CURB STOP SHALL BE IN CENTER OF MULTIPLE CONNECTIONS.

*BRASS TEE: INLET SIZE x 3/4" INCH



DRAWING NOT TO SCALE

STANDARD MULTIPLE BRANCH SERVICES

TOWN OF HOLLY SPRINGS ENGINEERING DEPARTMENT

STANDARD DETAIL NUMBER: HS617

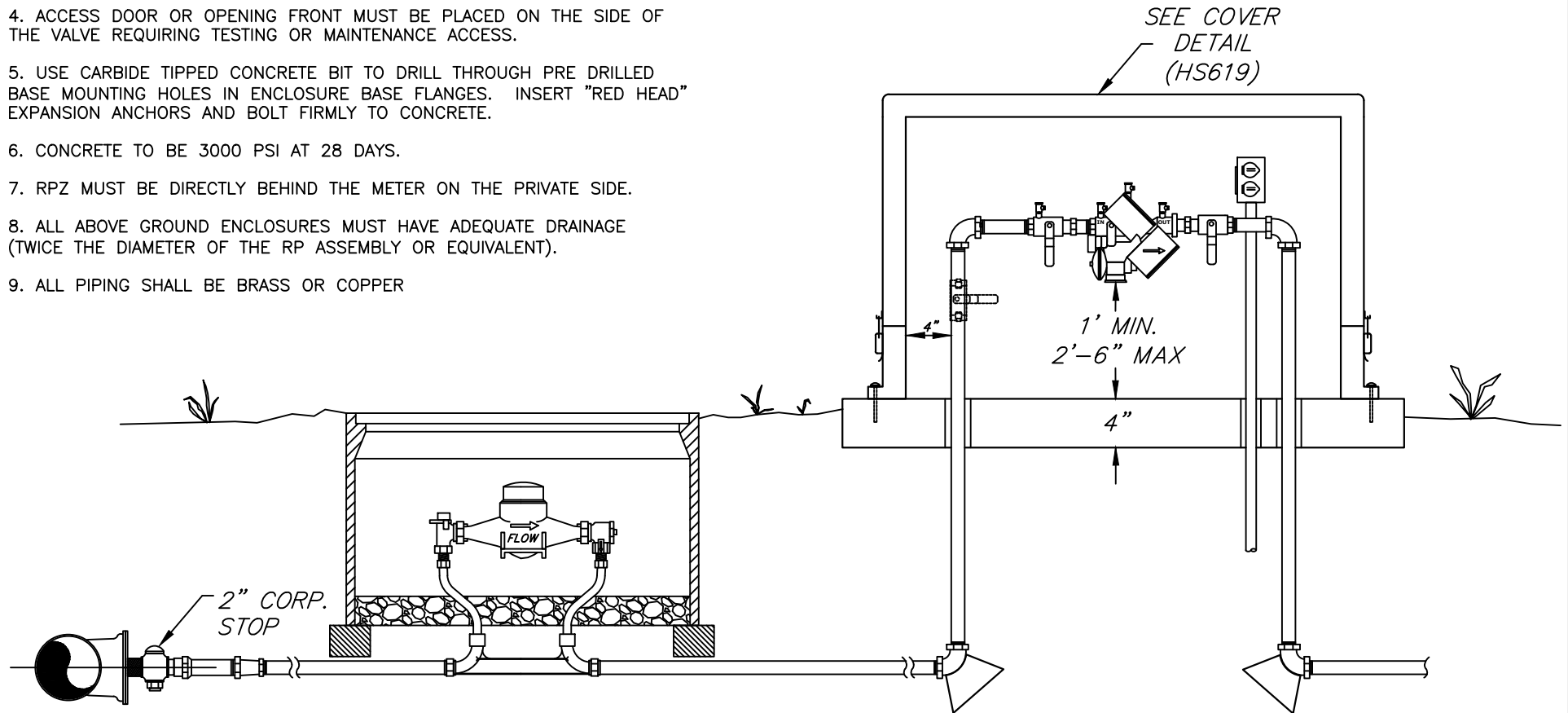
DATE REVISIONS

7/24/09



NOTES:

1. INSTALL VALVE ASSEMBLY IN ACCORDANCE WITH DRAWINGS. BE SURE THAT THE OUTSIDE DIMENSIONS OF THE VALVE ASSEMBLY WILL FIT INTO THE BOX BEFORE SETTING "HOT BOX".
2. PROVIDE GFCI RECEPTACLE, U.L. STND. 943-NEMA3R, INSIDE ENCLOSURE. MOUNT AT LEAST 6" ABOVE DISCHARGE POINT AND NEAR PIPE RISER ON THE HEATER CONNECTION SIDE.
3. WHEN PLACING HOT BOX OVER VALVE ASSEMBLY, BOX SHOULD BE COMPLETELY ASSEMBLED AND LATCHED BEFORE FASTENING TO FOOTER/SLAB.
4. ACCESS DOOR OR OPENING FRONT MUST BE PLACED ON THE SIDE OF THE VALVE REQUIRING TESTING OR MAINTENANCE ACCESS.
5. USE CARBIDE TIPPED CONCRETE BIT TO DRILL THROUGH PRE DRILLED BASE MOUNTING HOLES IN ENCLOSURE BASE FLANGES. INSERT "RED HEAD" EXPANSION ANCHORS AND BOLT FIRMLY TO CONCRETE.
6. CONCRETE TO BE 3000 PSI AT 28 DAYS.
7. RPZ MUST BE DIRECTLY BEHIND THE METER ON THE PRIVATE SIDE.
8. ALL ABOVE GROUND ENCLOSURES MUST HAVE ADEQUATE DRAINAGE (TWICE THE DIAMETER OF THE RP ASSEMBLY OR EQUIVALENT).
9. ALL PIPING SHALL BE BRASS OR COPPER



DRAWING NOT TO SCALE

RPZ INSTALLATION FOR COMMERCIAL IRRIGATION METERS

TOWN OF HOLLY SPRINGS

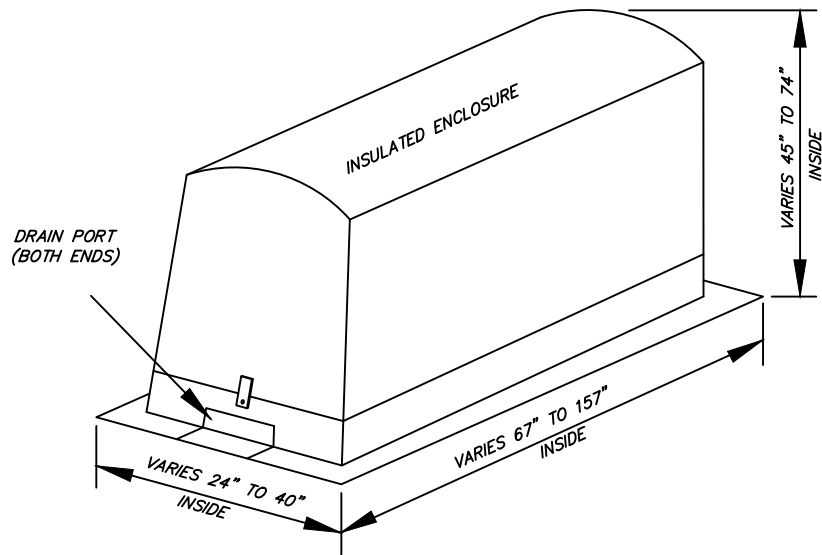
STANDARD DETAIL NUMBER: **HS618**

DATE REVISIONS

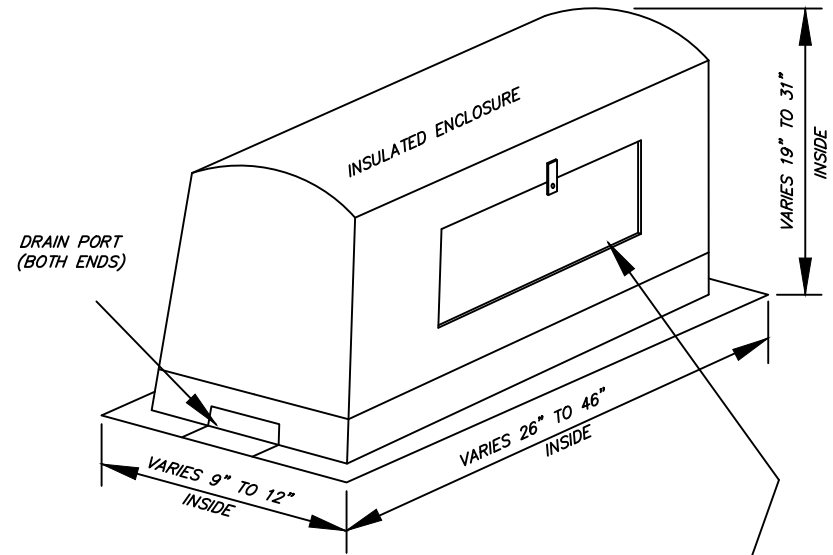
7/24/09

9/30/25



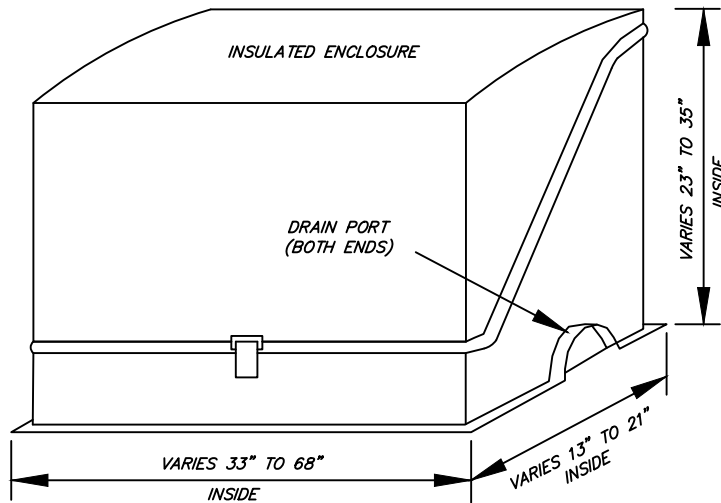


HINGED TOP



HINGED PANEL

ACCESS OPENING MUST BE ON THE SIDE OF THE VALVE REQUIRING TESTING OR MAINTENANCE ACCESS



DRAWING NOT TO SCALE

OUTDOOR RPZ SERVICES COVER

TOWN OF HOLLY SPRINGS ENGINEERING DEPARTMENT

STANDARD DETAIL NUMBER: **HS619**

DATE REVISIONS

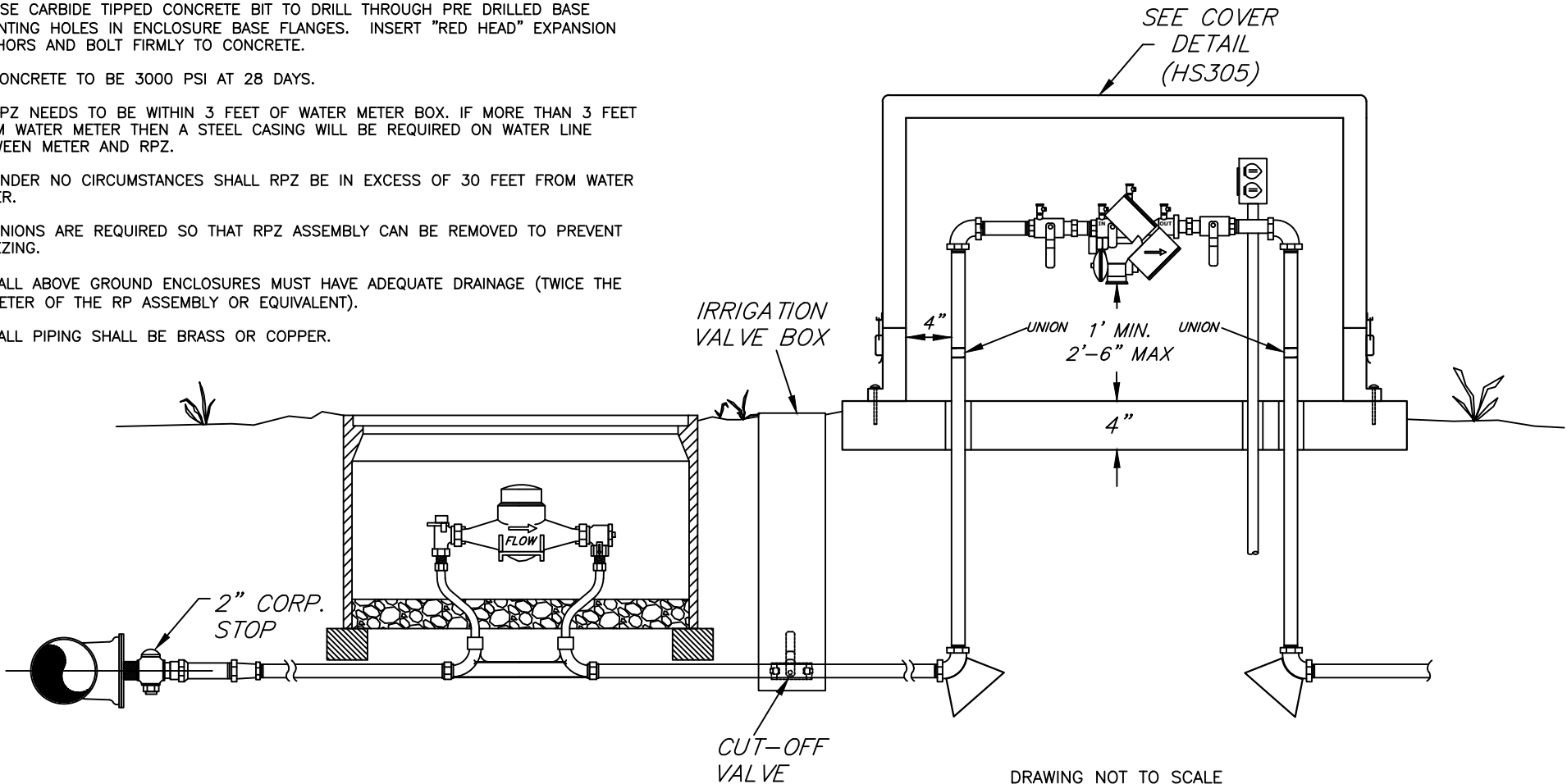
8/30/19



NOTES:

1. INSTALL VALVE ASSEMBLY IN ACCORDANCE WITH DRAWINGS. BE SURE THAT THE OUTSIDE DIMENSIONS OF THE VALVE ASSEMBLY WILL FIT INTO THE BOX BEFORE SETTING "HOT BOX".
2. PROVIDE GFCI RECEPTACLE, U.L. STND. 943-NEMA3R, INSIDE ENCLOSURE. MOUNT AT LEAST 6" ABOVE DISCHARGE POINT AND NEAR PIPE RISER ON THE HEATER CONNECTION SIDE.
3. WHEN PLACING HOT BOX OVER VALVE ASSEMBLY, BOX SHOULD BE COMPLETELY ASSEMBLED AND LATCHED BEFORE FASTENING TO FOOTER/SLAB.
4. ACCESS DOOR OR OPENING FRONT MUST BE PLACED ON THE SIDE OF THE VALVE REQUIRING TESTING OR MAINTENANCE ACCESS.
5. USE CARBIDE TIPPED CONCRETE BIT TO DRILL THROUGH PRE DRILLED BASE MOUNTING HOLES IN ENCLOSURE BASE FLANGES. INSERT "RED HEAD" EXPANSION ANCHORS AND BOLT FIRMLY TO CONCRETE.
6. CONCRETE TO BE 3000 PSI AT 28 DAYS.
7. RPZ NEEDS TO BE WITHIN 3 FEET OF WATER METER BOX. IF MORE THAN 3 FEET FROM WATER METER THEN A STEEL CASING WILL BE REQUIRED ON WATER LINE BETWEEN METER AND RPZ.
8. UNDER NO CIRCUMSTANCES SHALL RPZ BE IN EXCESS OF 30 FEET FROM WATER METER.
9. UNIONS ARE REQUIRED SO THAT RPZ ASSEMBLY CAN BE REMOVED TO PREVENT FREEZING.
10. ALL ABOVE GROUND ENCLOSURES MUST HAVE ADEQUATE DRAINAGE (TWICE THE DIAMETER OF THE RPZ ASSEMBLY OR EQUIVALENT).
11. ALL PIPING SHALL BE BRASS OR COPPER.

***Hot Box, Concrete Slab, and GFCI Receptical are optional for all single family home installations.**



DRAWING NOT TO SCALE

RPZ INSTALLATION FOR RESIDENTIAL IRRIGATION METERS

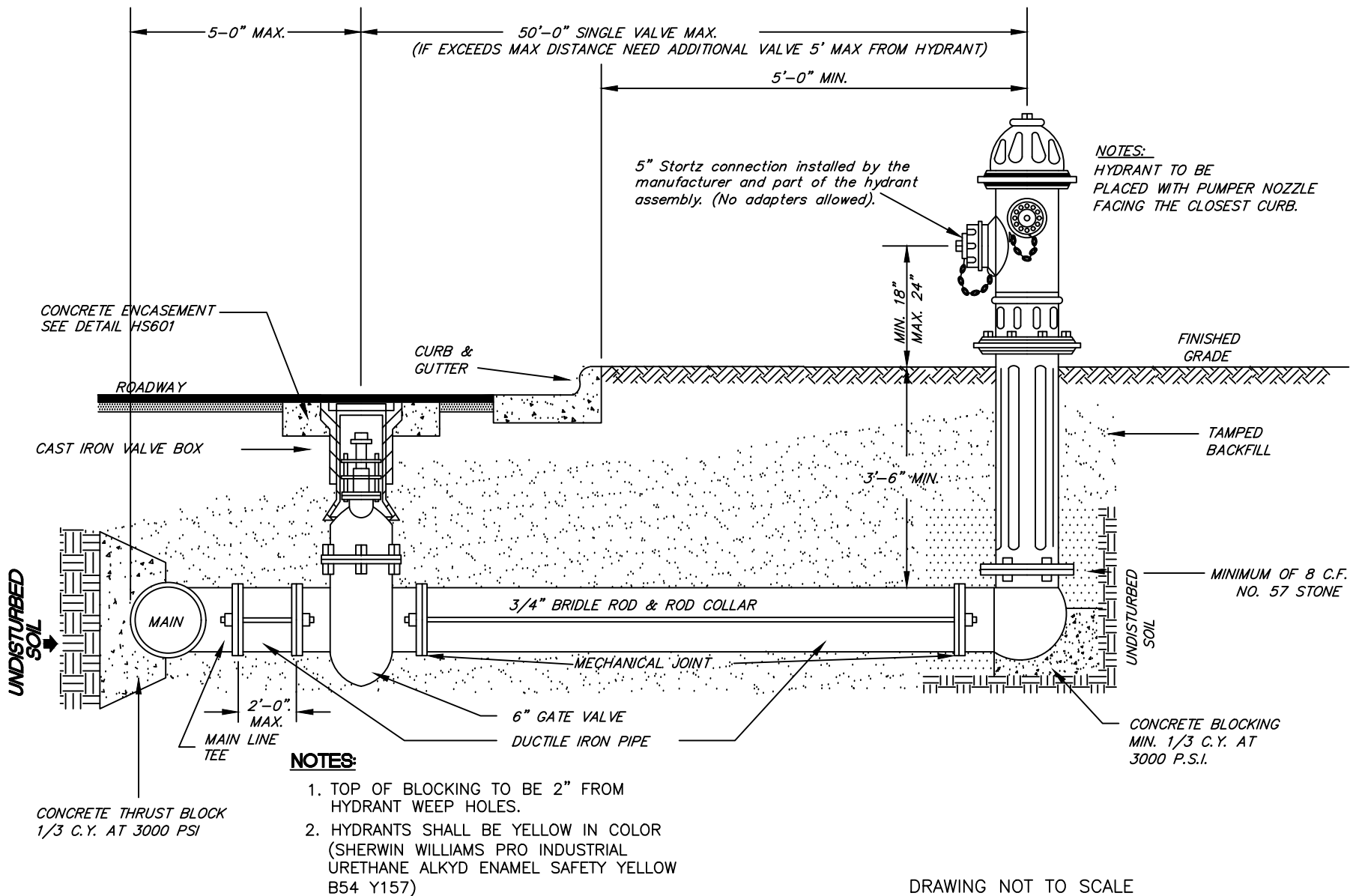
TOWN OF HOLLY SPRINGS

STANDARD DETAIL NUMBER: HS620

DATE REVISIONS

7/24/09
9/30/25





DRAWING NOT TO SCALE

STANDARD HYDRANT INSTALLATION

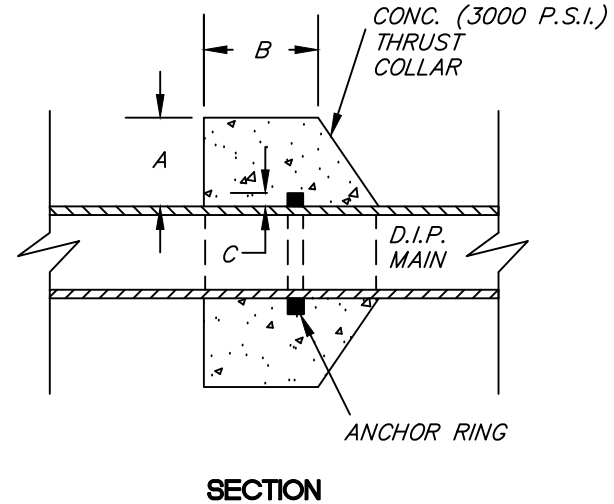
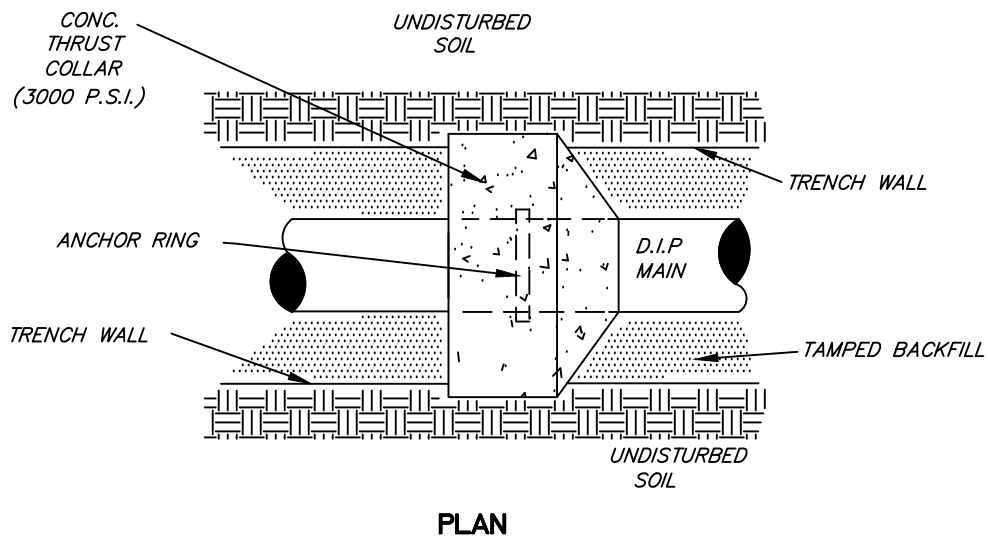
TOWN OF HOLLY SPRINGS ENGINEERING DEPARTMENT

STANDARD DETAIL NUMBER: **HS622**

DATE REVISIONS

11/9/21



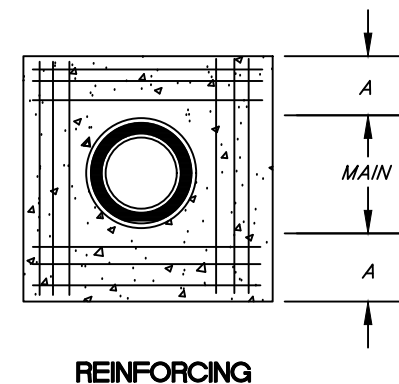


SCHEDULE

PIPE DIAMETER	CONCRETE THRUST COLLAR		ANCHOR RING	RING REQUIRED
	A	B	C	
6",8",12"	1'-0"	1'-0"	2"	ONE
16"	1'-4"	1'-0"	2"	ONE
20"	1'-4"	1'-0"	3"	ONE
24"	1'-4"	1'-0"	3"	TWO
30"	1'-4"	1'-2"	4"	TWO
36"	1'-4"	1'-4"	4"	TWO

NOTES:

1. CONCRETE COLLAR TO PROTRUDE INTO SIDES AND BOTTOM OF UNDISTURBED TRENCH WALL MIN. OF 6".
2. MEGALUG OR CAGE IS ACCEPTABLE INSTEAD OF ANCHOR RING.



NOTES:

6" TO 16" MAINS=12-NO.7 BARS
 20" TO 36" MAINS=12-NO.8 BARS
 BARS PLACED AS SHOWN

DRAWING NOT TO SCALE

STANDARD THRUST COLLAR INSTALLATION

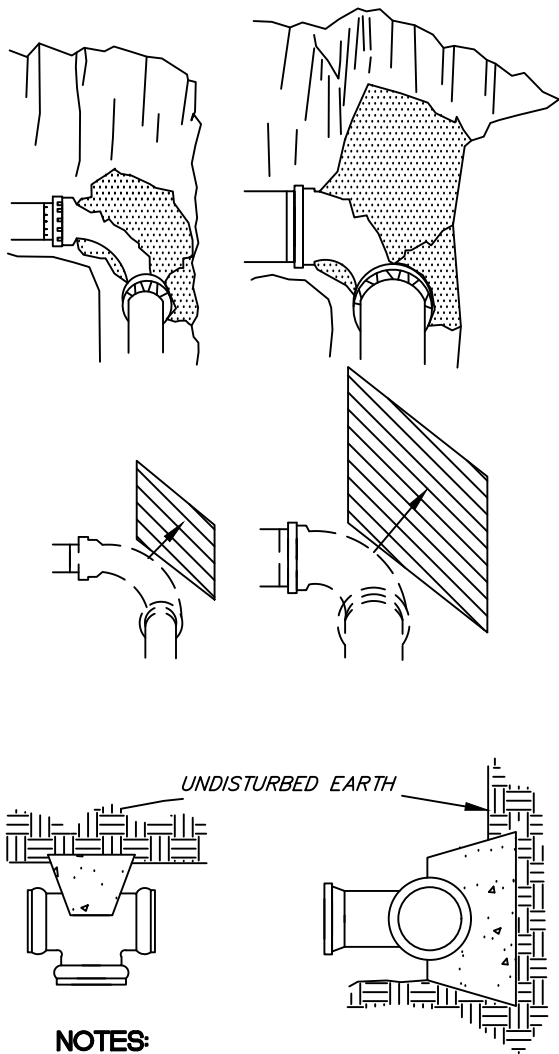
TOWN OF HOLLY SPRINGS ENGINEERING DEPARTMENT

STANDARD DETAIL NUMBER: HS623

DATE REVISIONS

1/24/09





NOTES:

1. 4 MIL PLASTIC MUST BE WRAPPED AROUND ALL FITTINGS PRIOR TO POURING CONCRETE.
2. NO CONCRETE SHALL COVER BOLTS OR GLANDS.

MINIMUM CONCRETE BLOCKING (C.Y.)*					
NOM. PIPE DIA. IN.	TEES & DEAD ENDS	90° BEND	45° BEND	22 1/2° BEND	11 1/4° BEND
4	1/3	1/3	1/3	1/3	1/3
6	1/3	1/3	1/3	1/3	1/3
8	1/3	1/2	1/3	1/3	1/3
10	2/3	3/4	1/2	1/3	1/3
12	3/4	1.0	2/3	1/3	1/3
14	1.0	1 1/2	3/4	1/2	1/3
16	1 1/3	2.0	1.0	1/2	1/3
18	1 2/3	2 1/3	1 1/3	2/3	1/3
20	2.0	3.0	1 2/3	3/4	1/2
24	3.0	4 1/3	2 1/3	1 1/3	2/3

*CONCRETE SHALL BE 3000 P.S.I. MIX.

DRAWING NOT TO SCALE

STANDARD REACTION BLOCKING

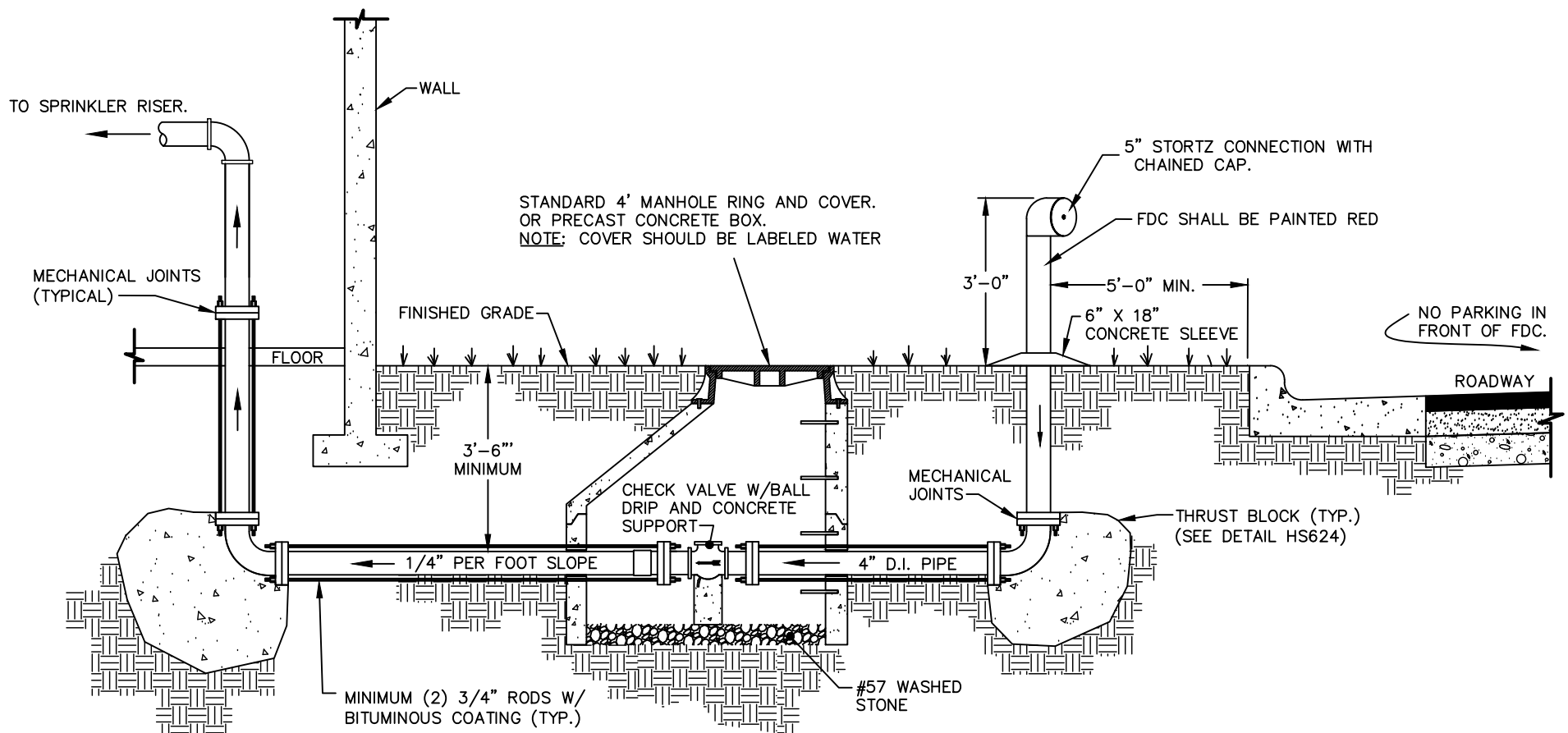
TOWN OF HOLLY SPRINGS ENGINEERING DEPARTMENT

STANDARD DETAIL NUMBER: HS624

DATE REVISIONS

7/24/09





NOTES:

- 1) ALL CONNECTION'S MUST BE WITHIN 100 FEET OF A FIRE HYDRANT.
- 2) FDC CONNECTION CAN BE ATTACHED TO SINGLE STORY BUILDINGS ONLY.
CHECK VALVE W/ BALL DRIP NOT REQUIRED IF CONNECTION IS TIED DIRECTLY TO THE BUILDING.

DRAWING NOT TO SCALE

STANDARD DETACHED FDC CONNECTION

TOWN OF HOLLY SPRINGS

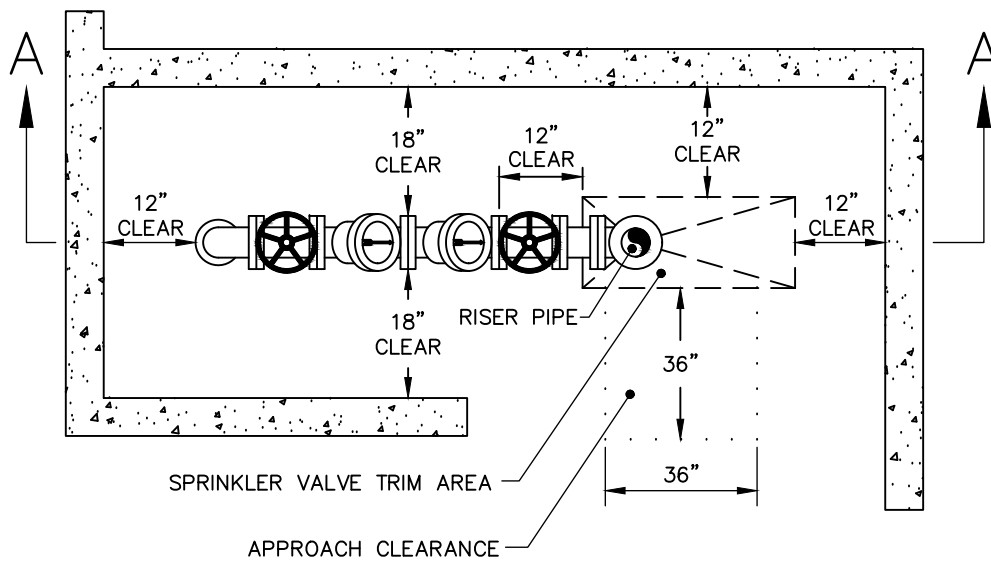
STANDARD DETAIL NUMBER: **HS625**

DATE REVISIONS

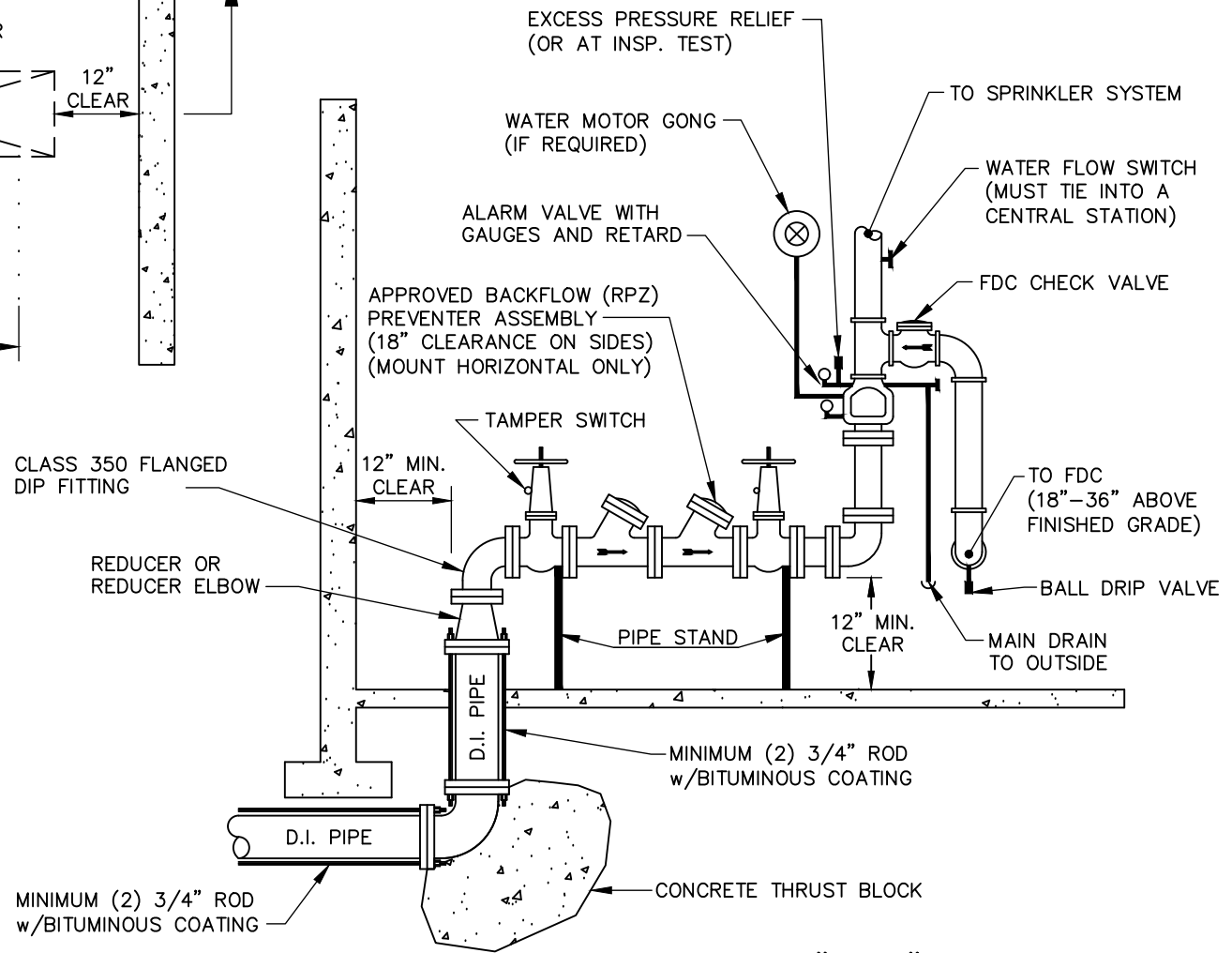
11/9/21

7/1/25





TOP VIEW



SECTION "A-A"

DRAWING NOT TO SCALE

STANDARD SPRINKLER RISER

TOWN OF HOLLY SPRINGS ENGINEERING DEPARTMENT

STANDARD DETAIL NUMBER: HS626

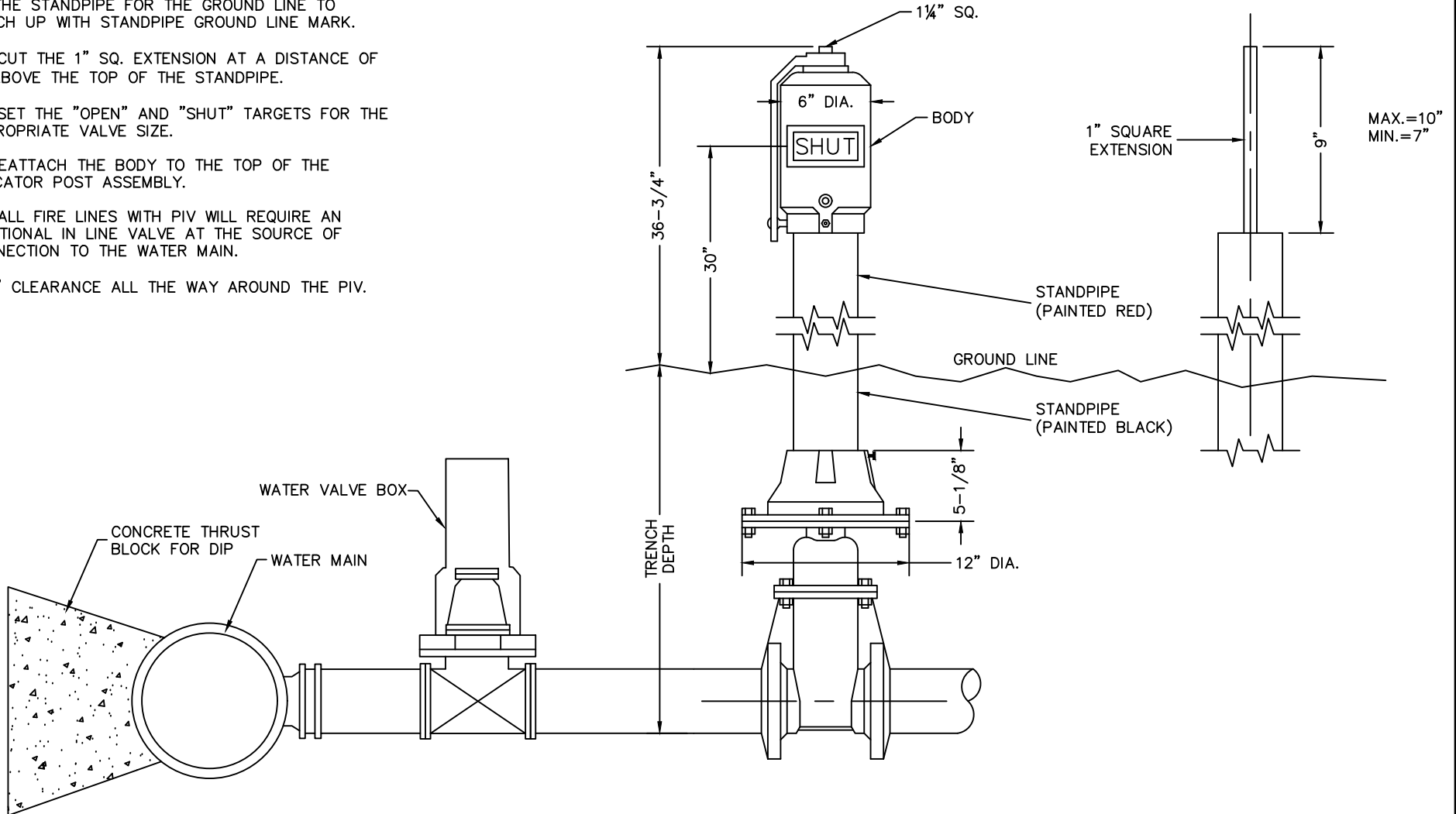
DATE REVISIONS

7/24/09



FIELD ADJUSTMENT INSTRUCTIONS

1. REMOVE THE BODY FROM THE TOP OF THE INDICATOR POST ASSEMBLY.
2. CUT THE REQUIRED LENGTH OFF THE BOTTOM OF THE STANDPIPE FOR THE GROUND LINE TO MATCH UP WITH STANDPIPE GROUND LINE MARK.
3. CUT THE 1" SQ. EXTENSION AT A DISTANCE OF 9" ABOVE THE TOP OF THE STANDPIPE.
4. SET THE "OPEN" AND "SHUT" TARGETS FOR THE APPROPRIATE VALVE SIZE.
5. REATTACH THE BODY TO THE TOP OF THE INDICATOR POST ASSEMBLY.
6. ALL FIRE LINES WITH PIV WILL REQUIRE AN ADDITIONAL IN LINE VALVE AT THE SOURCE OF CONNECTION TO THE WATER MAIN.
7. 5' CLEARANCE ALL THE WAY AROUND THE PIV.



DRAWING NOT TO SCALE

POST INDICATOR VALVE

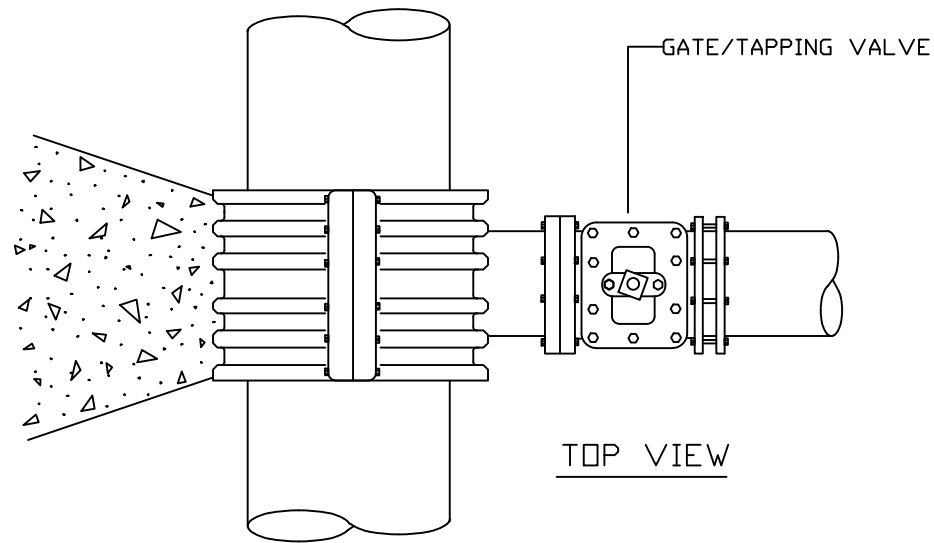
TOWN OF HOLLY SPRINGS ENGINEERING DEPARTMENT

STANDARD DETAIL NUMBER: HS627

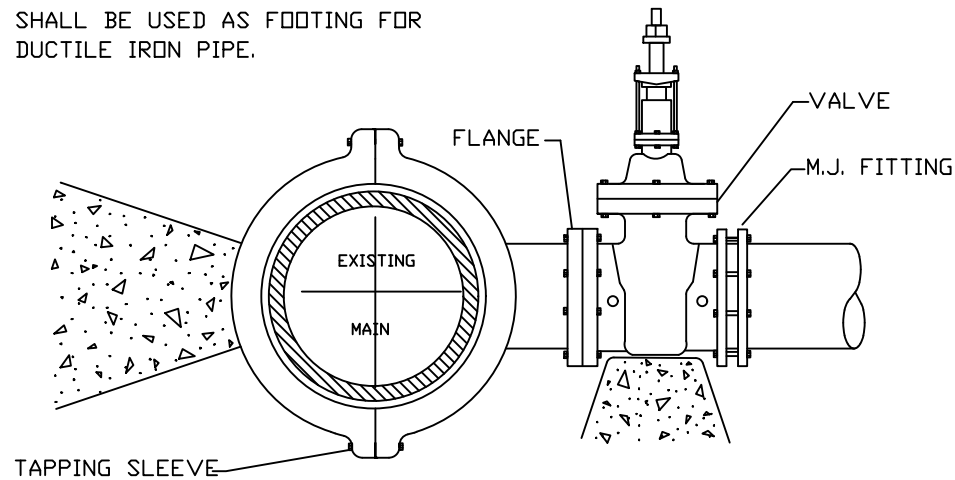
DATE REVISIONS

11/9/21





3000 PSI SOLID CONCRETE
SHALL BE USED AS FOOTING FOR
DUCTILE IRON PIPE.



SIDE VIEW

NOTES:
1. CONCRETE SHALL NOT CONTACT
BOLTS OR ENDS OF MECHANICAL
JOINT FITTINGS.

DRAWING NOT TO SCALE

4" – 24" STANDARD TAPPING SLEEVE AND VALVE ASSEMBLY

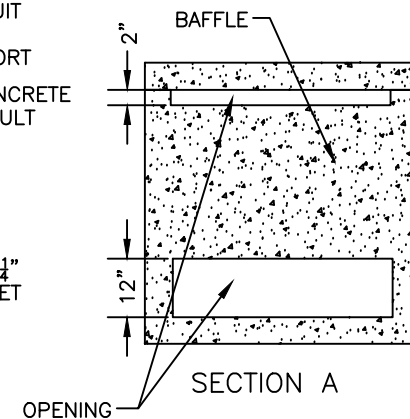
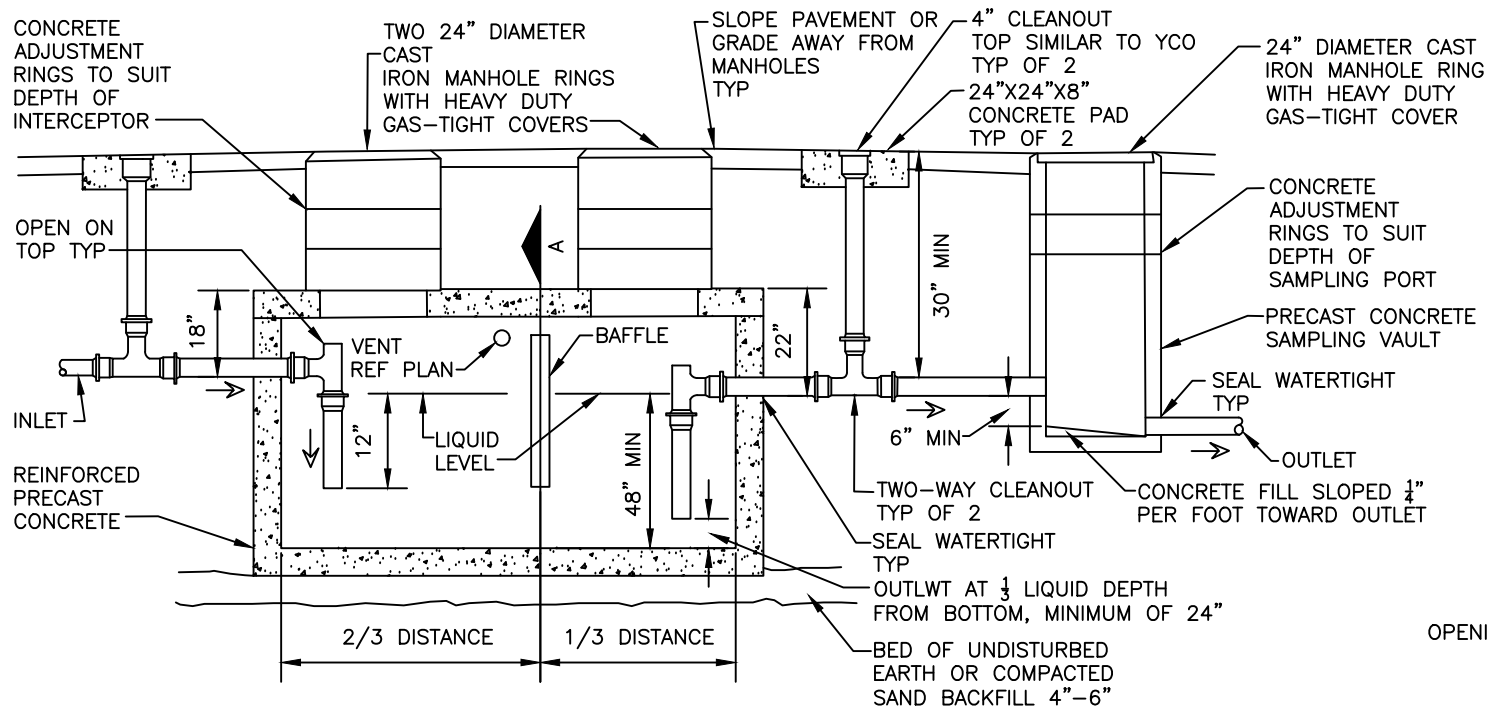
TOWN OF HOLLY SPRINGS ENGINEERING DEPARTMENT

STANDARD DETAIL NUMBER: HS628

DATE REVISIONS

8/30/19





DETAIL SHOWS GENERAL SCHEMATIC REQUIREMENTS. CONTRACTOR SHALL SUBMIT PROPOSED INTERCEPTOR INSTALLATION PLANS AND SPECIFICATIONS TO TOHS INSPECTIONS DEPARTMENT FOR APPROVAL BEFORE ACQUISITION OF INTERCEPTOR. PROVIDE INTERCEPTOR WITH ADEQUATE STRUCTURAL STRENGTH TO ACCOMMODATE VEHICULAR TRAFFIC AT INSTALLATION LOCATION.

NOTES:

1. PROVIDE SAMPLING PORT DOWNSTREAM OF THE JUNCTION WITH THE MAIN SANITARY SEWER.
2. REFER TO PLUMBING PLAN FOR PIPE SIZES.
3. CONTACT PUBLIC UTILITIES WITH QUESTIONS REGARDING GREASE TRAPS.

DRAWING NOT TO SCALE

PRECAST GREASE INTERCEPTOR

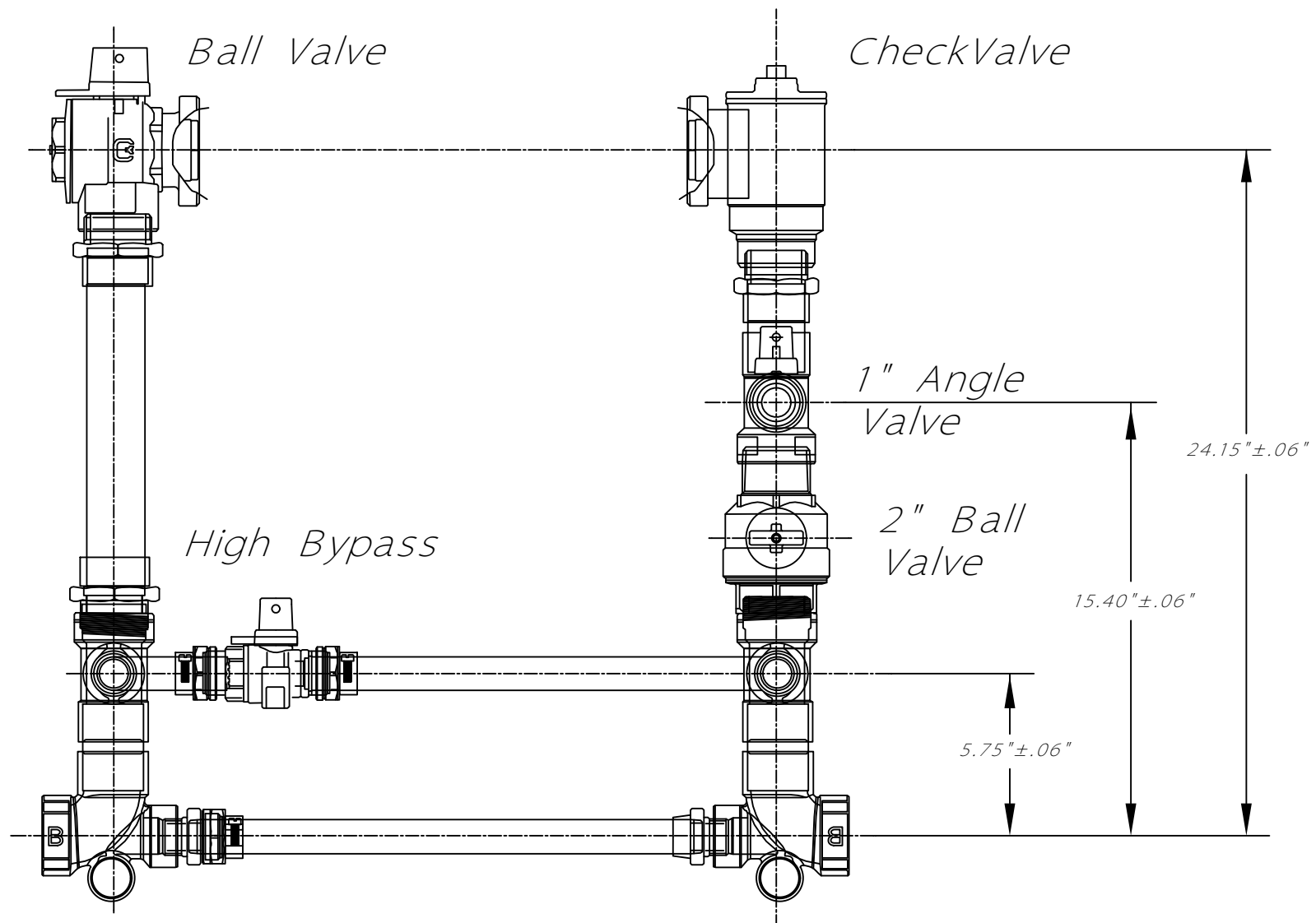
TOWN OF HOLLY SPRINGS ENGINEERING DEPARTMENT

STANDARD DETAIL NUMBER: HS629

DATE REVISIONS

9/14/09





DRAWING NOT TO SCALE

2" METER SETTER WITH HIGH BYPASS

TOWN OF HOLLY SPRINGS ENGINEERING DEPARTMENT

STANDARD DETAIL NUMBER: HS630

DATE

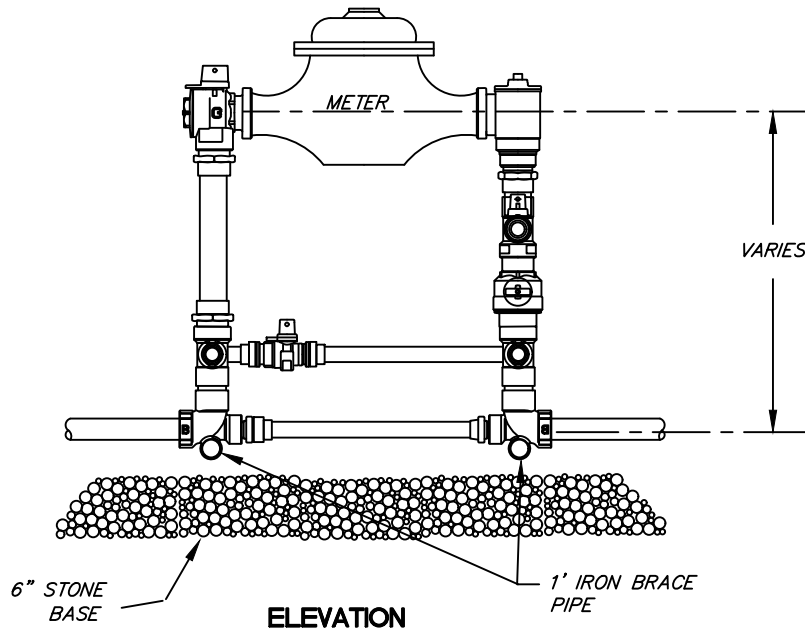
6/22/15

REVISIONS



NOTES:

TO ENSURE POSITIVE DRAINAGE, THE VAULT SHOULD BE TIED INTO THE EXISTING STORM DRAINAGE SYSTEM WHEN POSSIBLE.



NOTES:

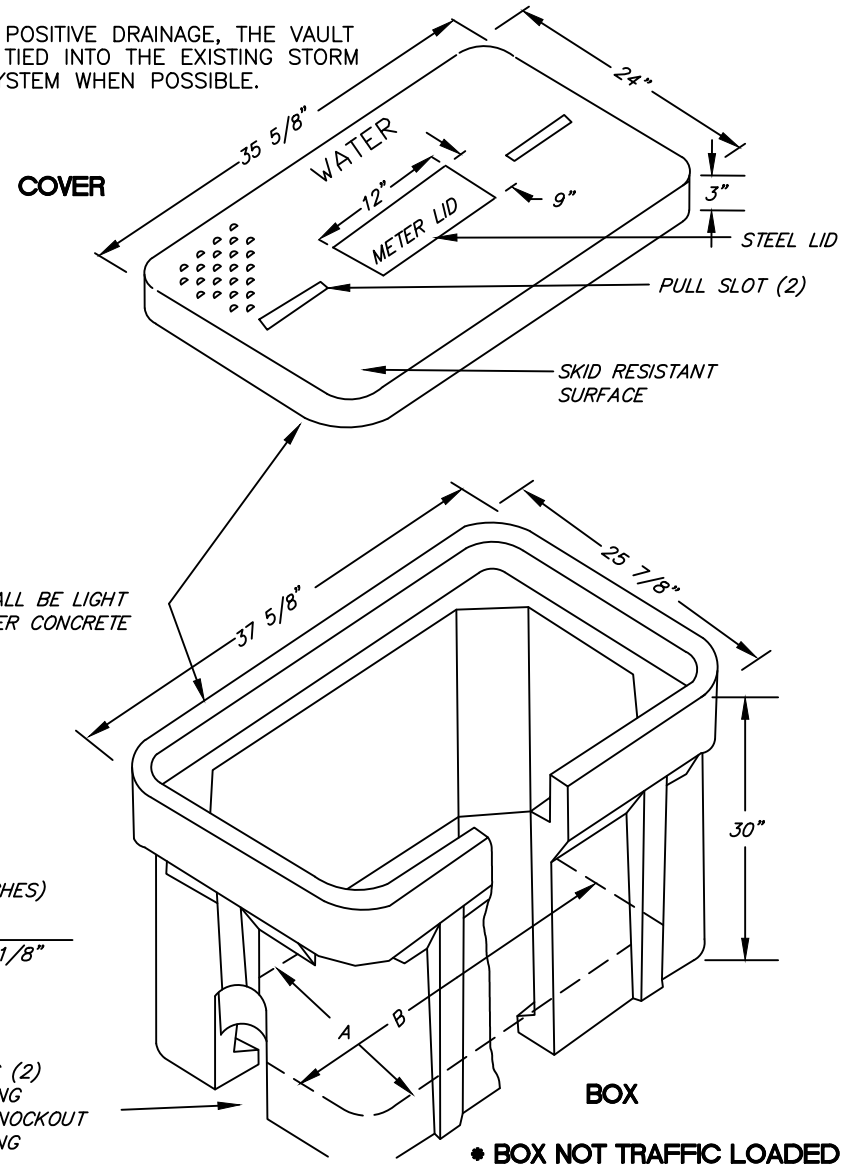
1. PIPING TO BE BRASS & COPPER TUBING & SHALL BE EQUIPPED W/ANGLED CHECK VALVE OUTLETS & BY-PASS FLANGED VALVE OR BY-PASS FLANGED BALL VALVE INLETS AS FURNISHED BY FORD CUSTOMSETTERS, MUELLER OR OTHER APPROVED EQUAL.

2. PRECAST CONCRETE BOX WITH ALUMINUM ACCESS HATCH WILL BE AN ACCEPTABLE ALTERNATIVE WITH APPROVAL OF THE DIRECTOR OF ENGINEERING.

DIMENSIONS (INCHES)

A	B
18 3/8"	30 1/8"

MOUSE HOLES (2)
4"x 4" OPENING
WITH 4"x4" KNOCKOUT
ABOVE OPENING



DRAWING NOT TO SCALE

STANDARD 2' METER INSTALLATION AND VAULT

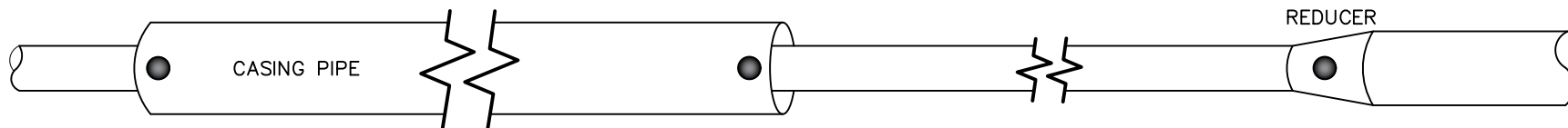
STANDARD DETAIL NUMBER: **HS631**

DATE REVISIONS

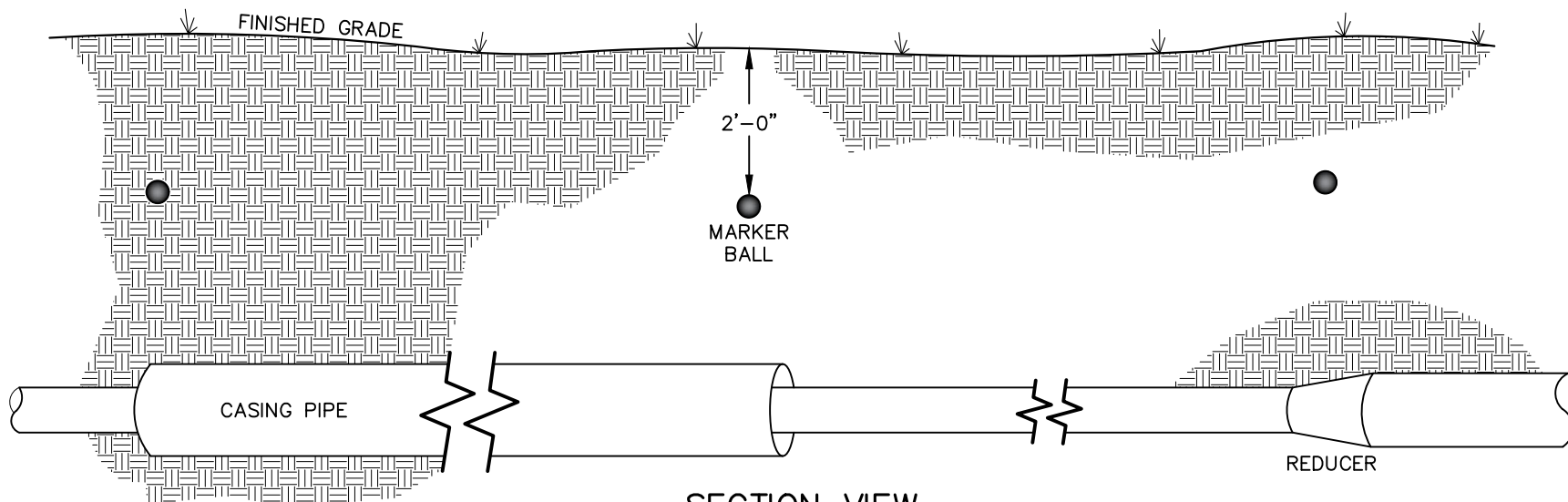
2/22/19

TOWN OF HOLLY SPRINGS ENGINEERING DEPARTMENT





PLAN VIEW



SECTION VIEW

UTILITY MARKER BALL COLOR

BLUE – POTABLE WATER



= NON-PROGRAMMABLE MARKER BALL

NOTES:

1. MARKER BALLS SHALL BE LOCATED ABOVE THE PIPE, 2 FEET BELOW FINISHED GRADE.
2. ADDITIONAL BALLS MAY BE REQUIRED AS DIRECTED BY THE TOWN IN CONGESTED AREAS OR TO MARK AN ATYPICAL ALIGNMENT.

DRAWING NOT TO SCALE

**STANDARD UTILITY MARKER BALL LOCATIONS
FOR WATER MAINS**

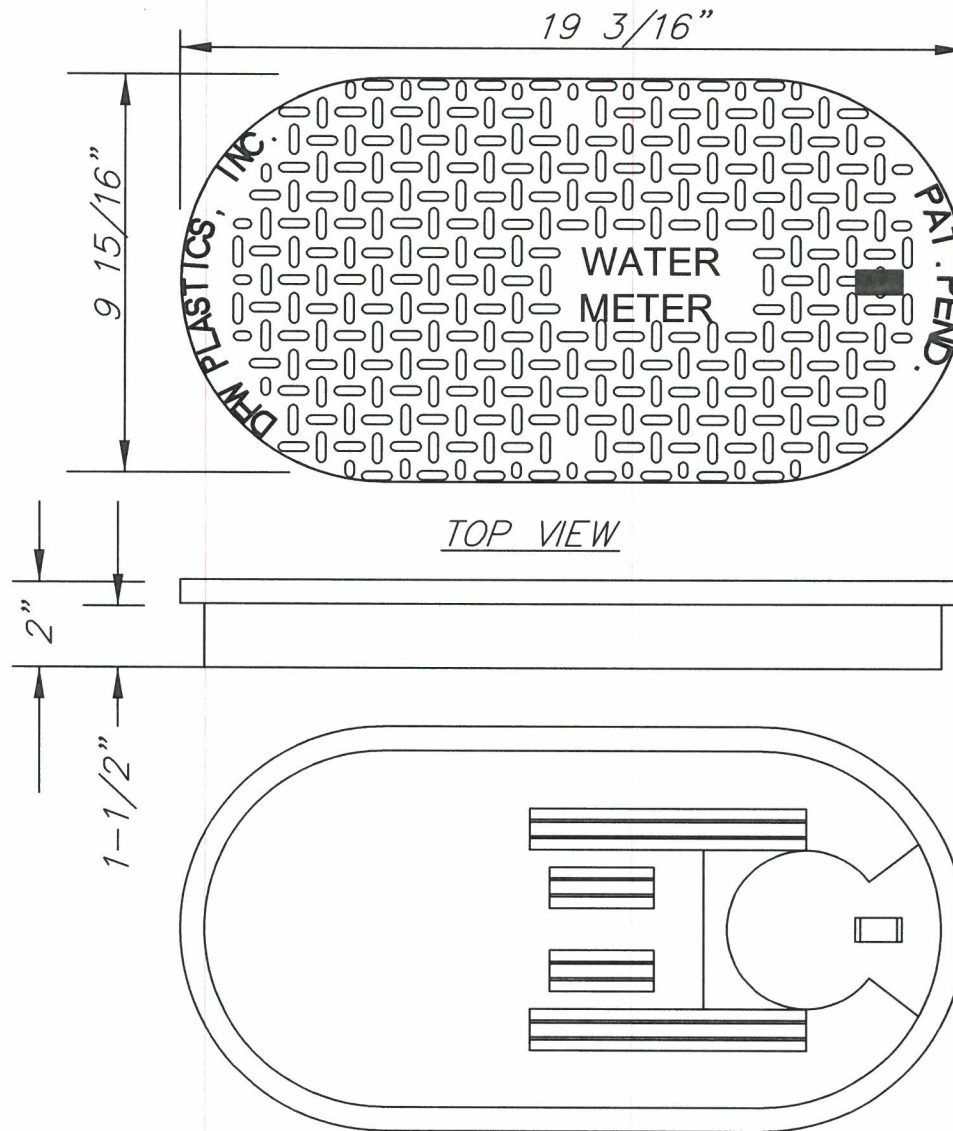
STANDARD DETAIL NUMBER: **HS633**

DATE REVISIONS

1/15/19

TOWN OF HOLLY SPRINGS ENGINEERING DEPARTMENT





NOTES:

1. DIM'S $\pm \frac{1}{8}$ U.N.O.
2. LID MATERIAL H.D.P.E.

DRAWING NOT TO SCALE

STANDARD WATER METER LID

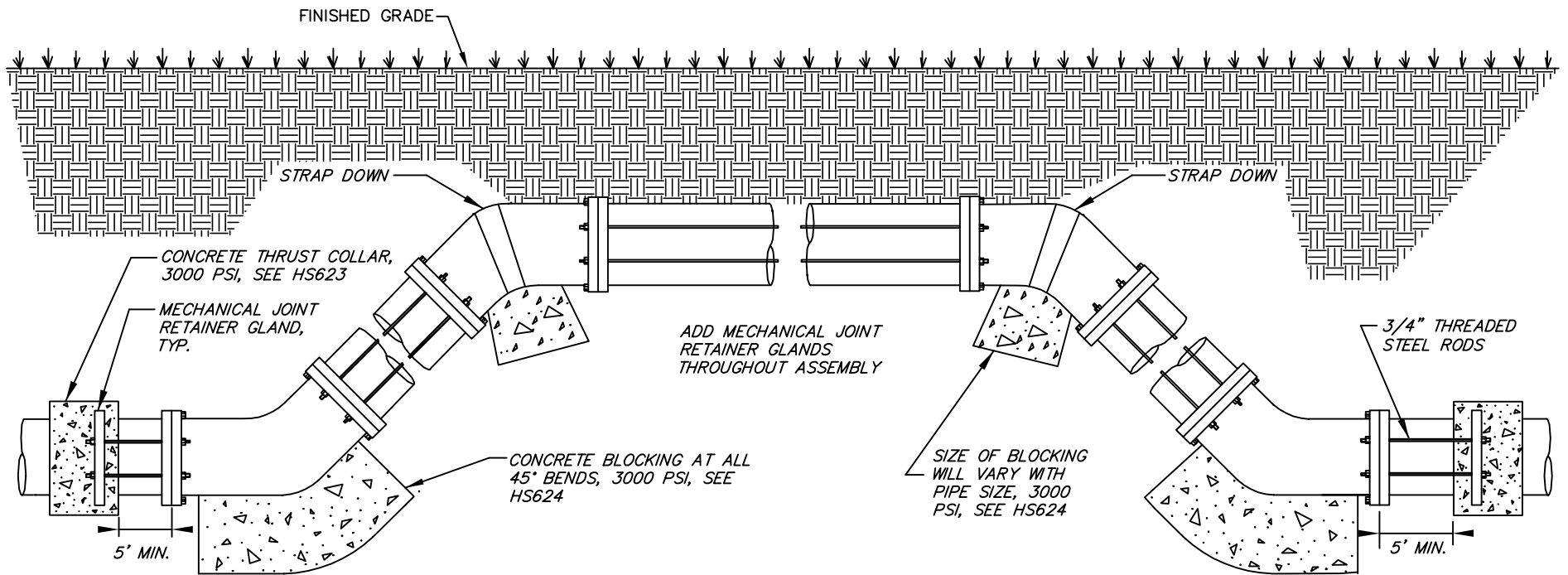
TOWN OF HOLLY SPRINGS ENGINEERING DEPARTMENT

STANDARD DETAIL NUMBER: **HS634**

DATE REVISIONS

2/22/19





ROD REQUIREMENTS

SIZE OF 45° BEND	STATIC THRUST IN POUNDS	NUMBER OF RODS REQUIRED
6"	4,328	2
8"	7,694	4
12"	17,312	4
16"	30,779	8
24"	69,252	8

NOTES:

1. VERTICAL BENDS ARE NOT PERMITTED UNLESS OTHERWISE APPROVED BY TOHS DEVELOPMENT INSPECTOR.
2. STEEL RODS AND BOLTS SHALL BE 3/4" HOT DIPPED GALVANIZED.
3. CONCRETE SHALL NOT CONTACT BOLTS OR ENDS OF MECHANICAL JOINT BENDS.
4. RESTRAINED MECHANICAL GLANDS TO BE USED AT ALL FITTINGS.
5. MUST USE DUCTILE IRON EYE BOLTS WHERE NECESSARY.
6. 3' MINIMUM COVER MUST BE MAINTAINED ON ALL WATER MAINS

DRAWING NOT TO SCALE

STANDARD VERTICAL BEND

TOWN OF HOLLY SPRINGS ENGINEERING DEPARTMENT

STANDARD DETAIL NUMBER: **HS635**

DATE REVISIONS

6/27/23

